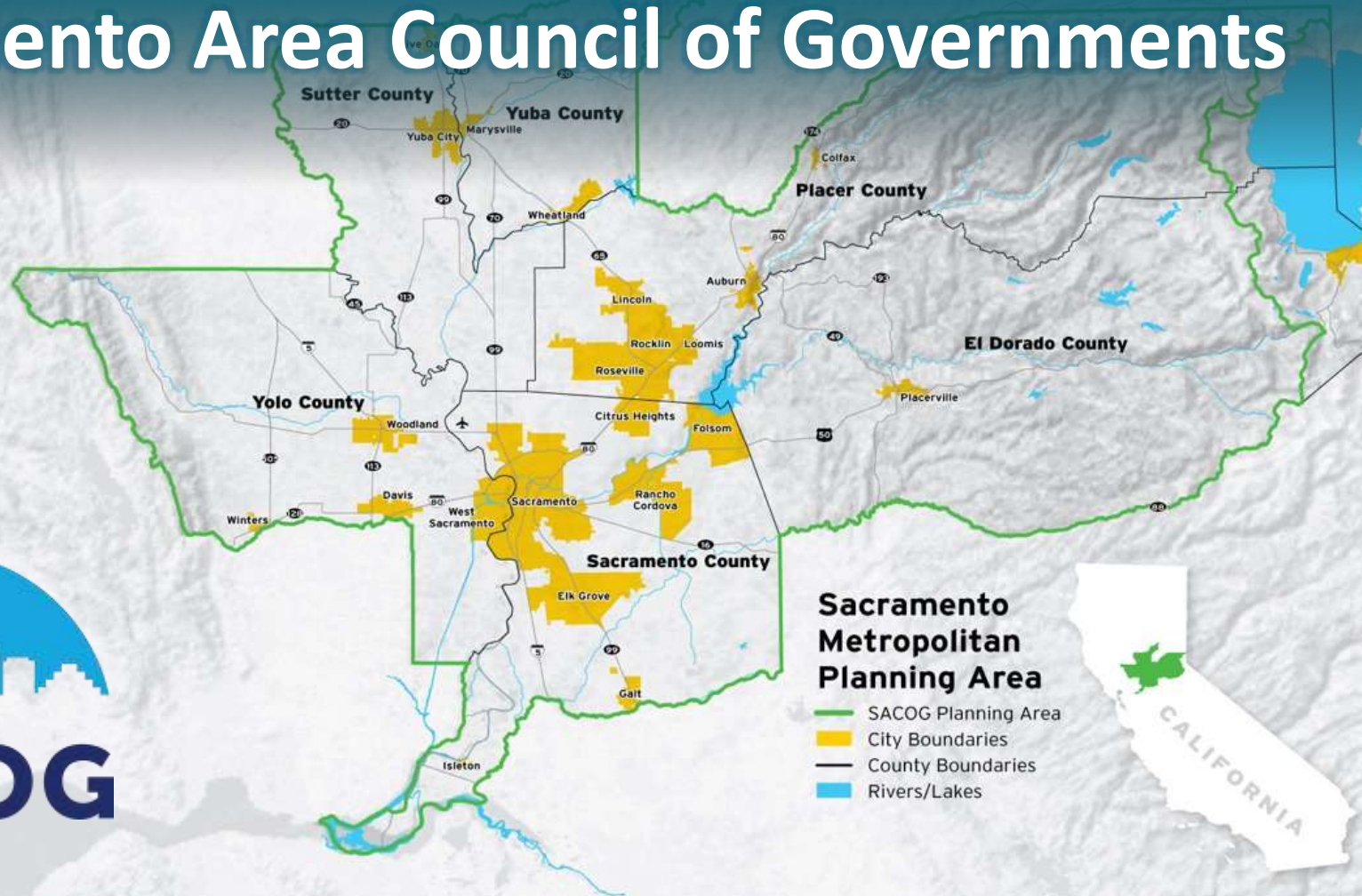




The Big Picture: Long Range Regional Planning

Summer 2022

Sacramento Area Council of Governments



Sacramento Metropolitan Planning Area

- SACOG Planning Area
- City Boundaries
- County Boundaries
- Rivers/Lakes

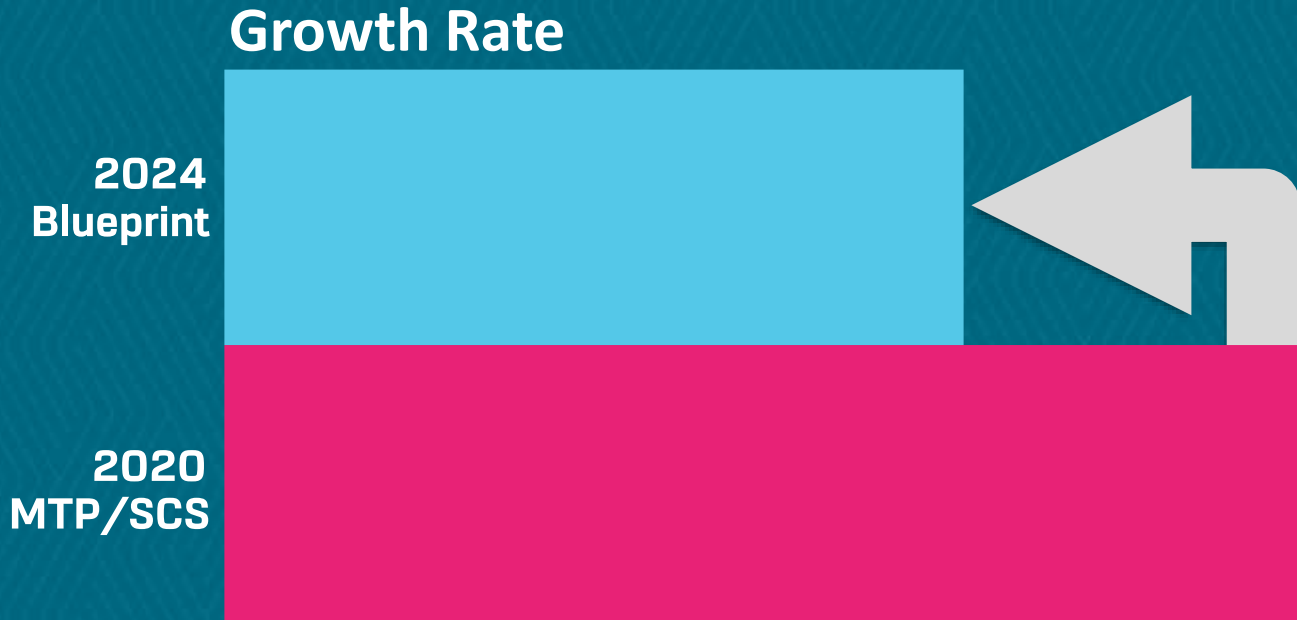




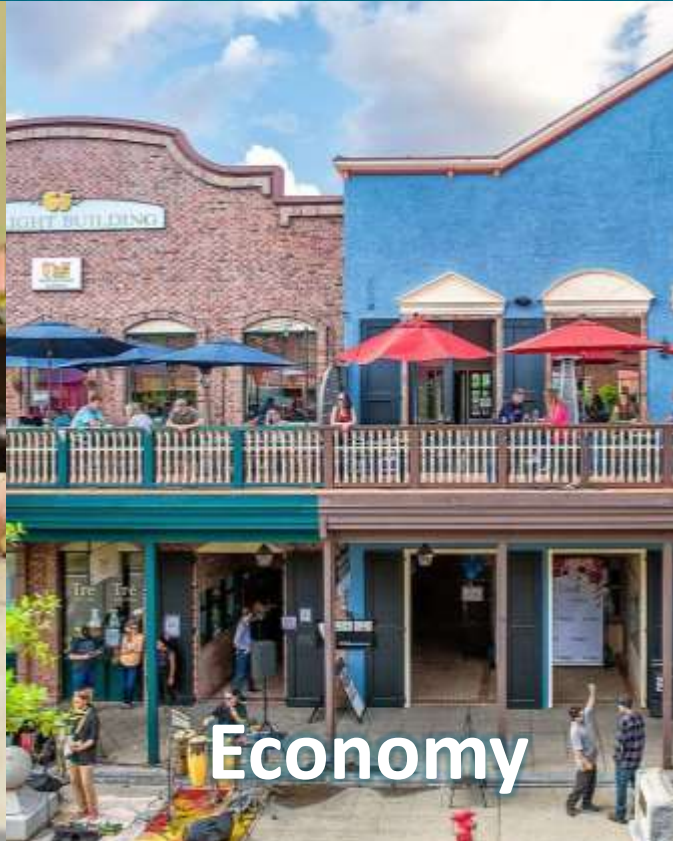
BLUEPRINT

METROPOLITAN TRANSPORTATION PLAN
SUSTAINABLE COMMUNITIES STRATEGY

Sacramento Region Growth Forecast



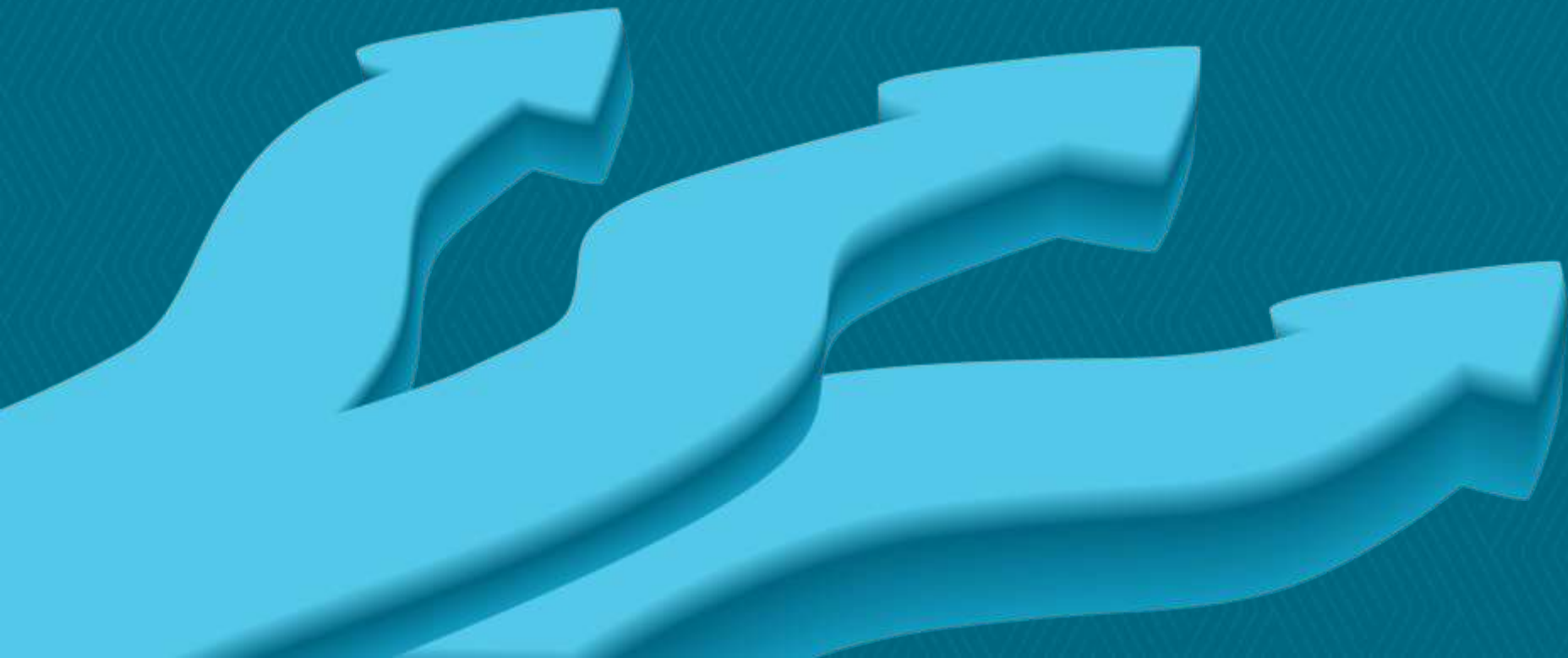
Triple Bottom Line Framework



Transportation

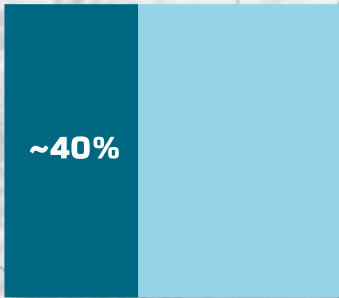


Future Pathways

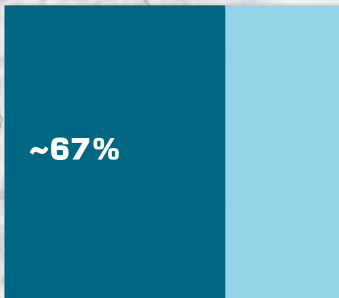


1

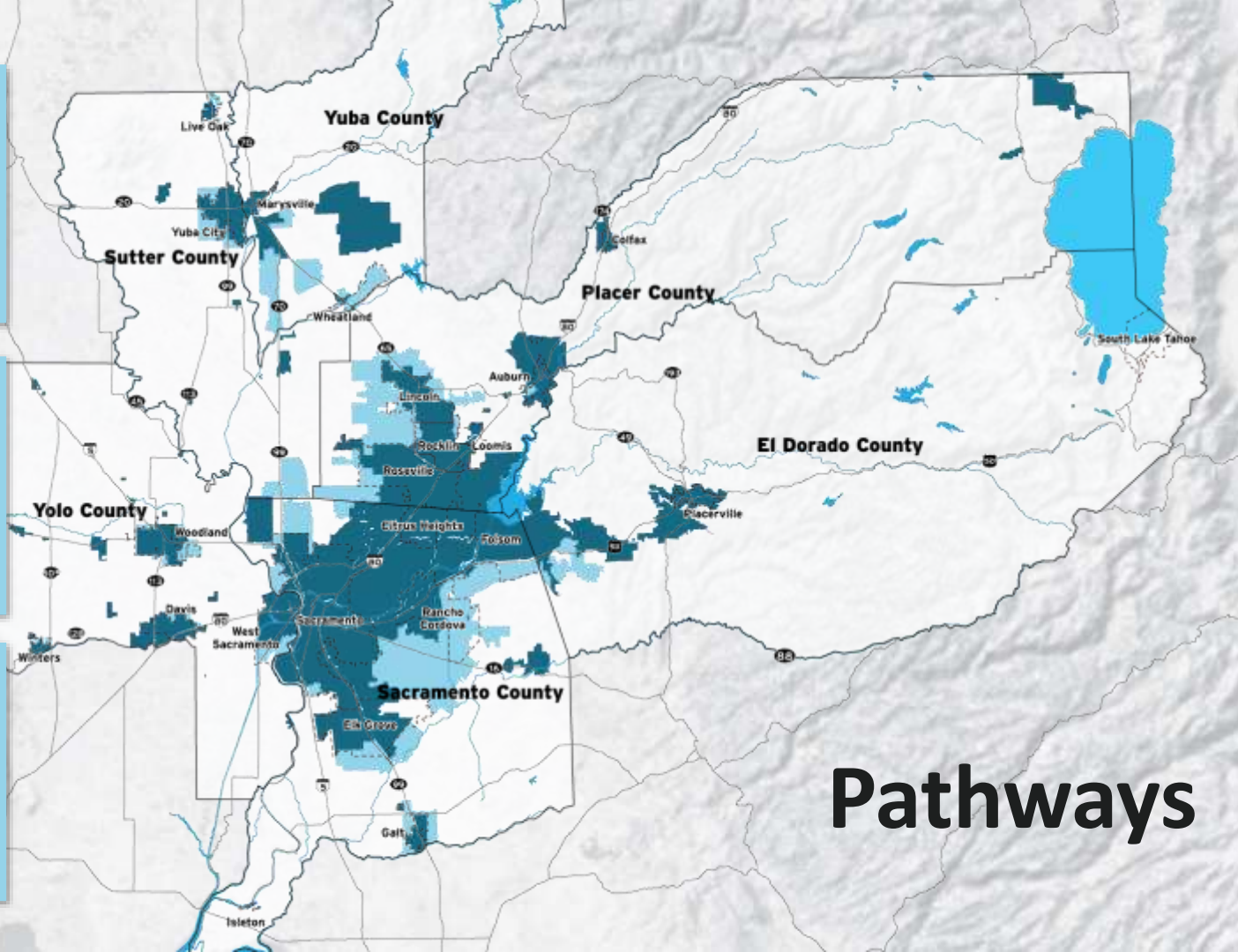
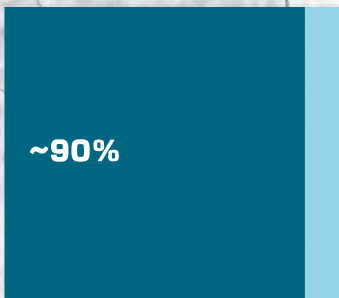
HOUSING GROWTH IN EXISTING COMMUNITIES



2



3



Pathways

Outreach and Engagement



How do you
get around?
tell us your
thoughts!
¿Como viajas?
¡di nos tus opiniones!
 



Timing



- **Education & Outreach**
 - **Three Pathways**
 - **Elected Info Sessions**
 - **Preferred Pathway**
- Adoption**

ONGOING IMPLEMENTATION





**METROPOLITAN
TRANSPORTATION
COMMISSION**



**MEGA
REGION**

**NORTHERN CALIFORNIA
WORKING GROUP**

San Francisco

Sacramento

Stockton

SACOG
I-4 Managed Lanes -
Sutterville Road to Yuba County Line

SACOG
Sacramento to Roseville
Third Main Track - Phase 1

SACOG
Yuba I-80 and US 40 Managed Lanes

SACOG
Valley Rail Program includes
expansion of both ACE and the
San Joaquin Services

MTC
I-80 Westbound Corridor
Weather Enforcement Facility
(Truck Scales)



MTC
Part of Oakland Community Impact
Reduction: Roundhouse Truck EV Charging
Infrastructure and Truck Parking

SJOGG
Interstate 205 Managed Lanes Project

SJOGG
Passenger Rail Improvements

SJOGG
State Route 99/205 Interchange
Project (Phase 1A & 1B)

MTC
Valley Link Buildout

SJOGG
Central Valley Gateway Project

MTC
Capitol Corridor South Bay Connect



Ready, Set,
TRAILS!
 VISION FOR A CONNECTED
 SACRAMENTO REGION



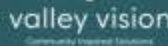
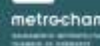
Our Path

FORWARD:

The Prosperity Strategy

A BRIDGE TO ACTION FOR
INCLUSIVE ECONOMIC
RECOVERY & GROWTH

2020



2022 Youth Leadership Academy





BLUEPRINT