








# River District Master Plan

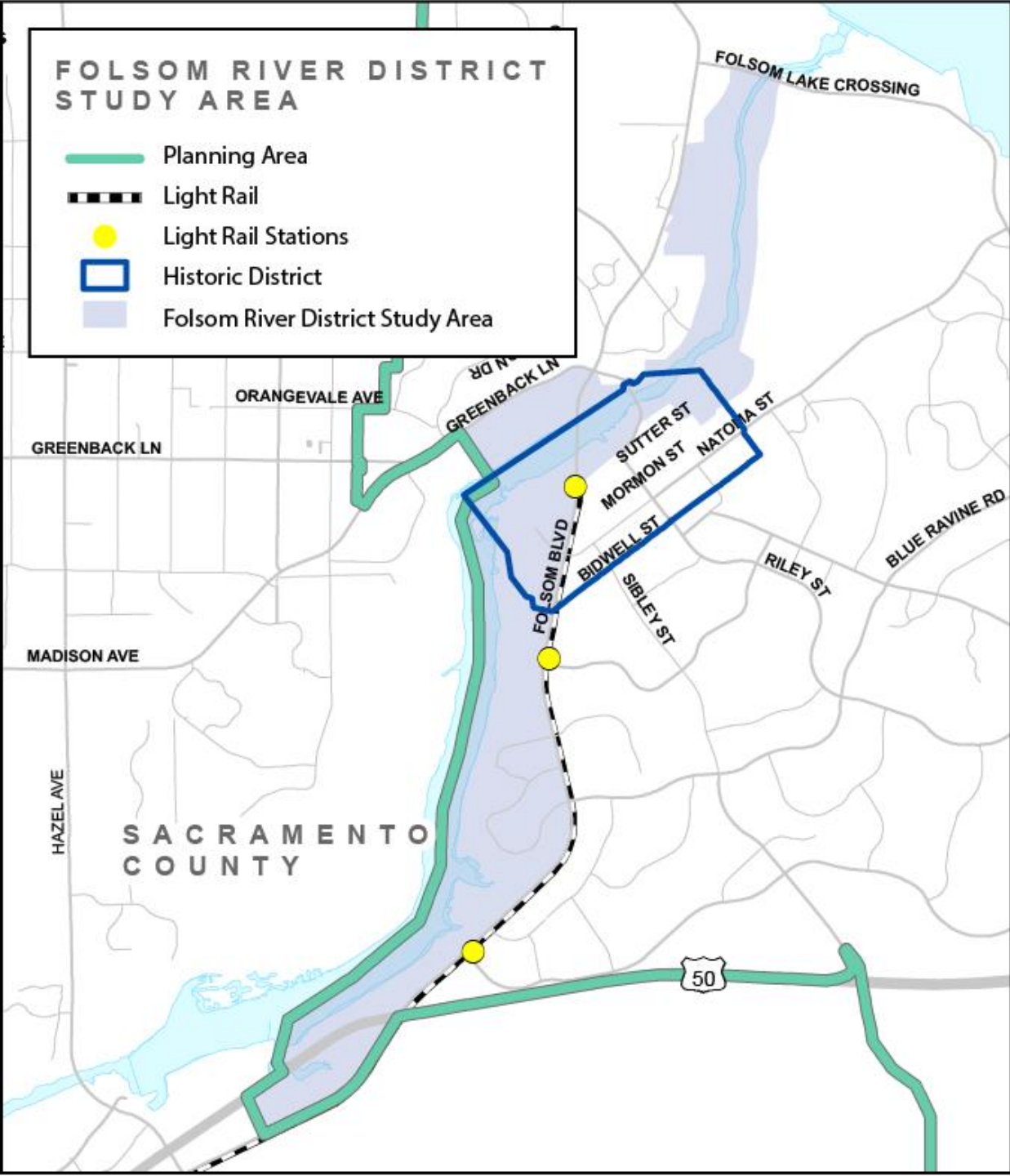
# Why a River District Master Plan?

## From the General Plan:

- Increase public access
- Increase recreation opportunities
- Increase economic development
- Provide city gateway enhancements
- Commit to high quality design
- Enhance Folsom's heritage
- Celebrate and protect our environmental, cultural and historical resources

**FOLSOM RIVER DISTRICT  
STUDY AREA**

-  Planning Area
-  Light Rail
-  Light Rail Stations
-  Historic District
-  Folsom River District Study Area



# Increase Public Access



Gold Lakes Dr/Leidesdorff St  
Folsom Blvd



Willow Cr. Entrance at

# Increase Public Access



Parkshore Drive  
Trail



Rodeo Park/Johnny Cash

# Increase Recreation Opportunities



**Black Miners Bar Group Campground  
Street**



**River Overlook at Riley**

# Increase Recreation Opportunities



Potential upper-lake rowing boathouse  
Miners Bar

Swim/sun area at Black

# Increase Economic Development



Folsom Auburn Road old gas station



Cliff House restaurant



# Increase Economic Development



Corporation Yard  
Leidesdorff St.



Surplus City Property -

# Enhance City Gateways



Folsom/Auburn Rd at Folsom Lake Xing    Light Rail Stop at Natoma Station

# Enhance City Gateways



Highway 50  
River Canyon



Greenback Lane at Am.

# Commit to High Quality Design



Folsom Blvd trail access  
Fol/Aub Rd



Folsom Lake Crossing at  
Fol/Aub Rd

# Unique Opportunities Abound



The Cliff House...



What if...?

# Unique Opportunities Abound



Underutilized Black Miners Bar waterfront?



Why an auto mall with

# What if...



Folsom had its own “Riverwalk?”

# What if...



Folsom had its own “Riverwalk” overlooks?



...with historical





“Rivers are places that renew our spirit, connect us with our past, and link us directly with the flow and rhythm of the natural world.”

- Ted Turner



CITY OF  
**FOLSOM**  
DISTINCTIVE BY NATURE