

# 🍁 Appendix C - Existing Developed Parks



## Table of Contents

### Appendix C – Existing Developed Parks

Table of Contents .....	Pg.	i
Introduction .....	Pg.	ii
Amos P. Catlin Park .....	Pg.	1
Beacon Hill Park.....	Pg.	1
Cambridge Place Mini Park.....	Pg.	2
Chadwick Mini Park.....	Pg.	2
Cobble Hills Ridge Park .....	Pg.	3
Cummings Family Park .....	Pg.	3
Digger and Sharon Williams Rodeo Park.....	Pg.	4
Egloff Family Park.....	Pg.	4
Ernie Sheldon Youth Sports Park.....	Pg.	5
Folsom City Lions Park .....	Pg.	5
Folsom Garden Club Mini Park .....	Pg.	6
Folsom Kids Play Park .....	Pg.	6
Granite Mini Park .....	Pg.	7
Handy Family Park.....	Pg.	7
Hanneford Family Park.....	Pg.	8
Hazel McFarland Park.....	Pg.	8
John Kemp Community Park.....	Pg.	9
Keller Mini Park .....	Pg.	9
Kentfield Mini Park .....	Pg.	10
Levy Park .....	Pg.	10
Mann Family Park .....	Pg.	11
Nisenan Community Park.....	Pg.	11
Philip C. Cohn Park.....	Pg.	12
Preserve Mini Park.....	Pg.	12
Prewett Mini Park .....	Pg.	13
Reflection Mini Park .....	Pg.	13
Shores Mini Park.....	Pg.	14
Steeplechase Park .....	Pg.	14
Thorndike Mini Park .....	Pg.	15
Wellfleet Mini Park .....	Pg.	15
Windsor Park.....	Pg.	16

## Introduction

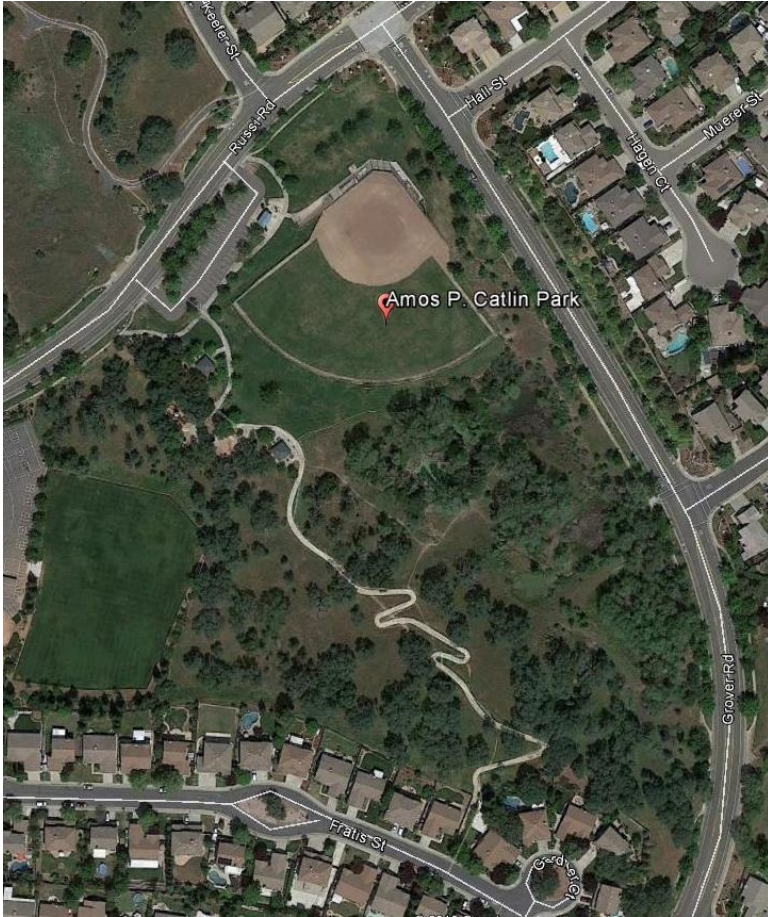
This Appendix lists the City of Folsom parks which have been totally built-out to the master development plans adopted, approved, and as updated over the last 27 years.

These 31 parks range from small mini parks of a few thousand square feet (4,500 SF Chadwick Mini Park) to over 50 acres (Nisenan Community Park).

The variety of recreation elements provided is impressive. The following iconology is utilized to illustrate these sports activities and recreation elements:

	Tennis		Hiking Trail
	Basketball		Bike Trail
	Soccer		Nature Area
	Lacrosse		Fishing
	Cricket Pitch		Community Garden
	Youth Baseball / Youth Softball / Adult Softball		Amphitheater
	Multiple Fields		Pre-School Facility
	Volleyball Court		Arts Facility
	Cross Country Running		55+ Senior Facility
	Track & Field		Classroom / Meeting Facility
	Roller Hockey		Miniature Live Steam Train
	Skate Park		Picnic Table
	BMX Biking		Group Picnic Shelter
	Splash Play		Barbecue
	Play Equipment		Concessions
	Horseshoe Pit		Restroom
	Dog Park		P Parking
	Rodeo Arena		Z Folsom Zoo Sanctuary

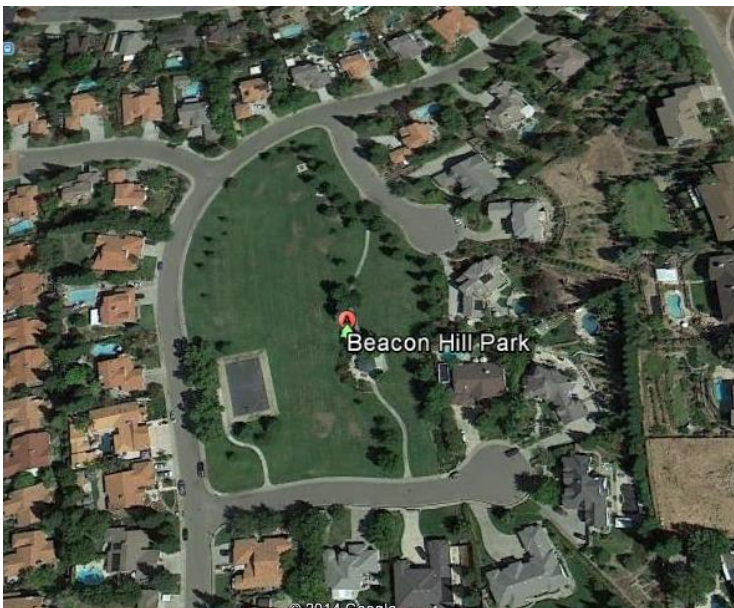
## Amos P. Catlin Park



Amos P. Catlin Park is located at 825 Russi Road provides recreational facilities consisting of a baseball field, cricket pitch, group picnic shelters and BBQs, play equipment, restroom, and on-site parking area is provided. In addition there is a bike trail connection from Russi Road to Fratis Street.



## Beacon Hill Park



Beacon Hill Park is located at 505 Rockport Circle, providing recreational facilities for surrounding residents. The park includes picnic tables, a picnic shelter, and BBQ Grill. In addition, Beacon Hill accommodates a basketball court and open play turf area. No on-site parking is provided.



## Cambridge Place Mini Park



Cambridge Place Mini Park is located at 197 Wellfleet Circle, within a residential neighborhood. The Park contains a bench and picnic tables. No on-site parking is provided; however the Humbug Willow Creek Trail is nearby for park users to arrive on foot or bicycle.



## Chadwick Mini Park



Chadwick Mini Park is located at 179 Chadwick Way, surrounded by residential housing. The park includes two picnic tables, benches, and a picnic pavilion. No on-site parking is provided, however there is a trail connection to the Humbug-Willow Creek Parkway Trail for park users to arrive on foot or bicycle.



### Cobble Hills Ridge Park



Located at 124 Rockbolt Circle, Cobble Hills Ridge Park lies within the Folsom Heights area, providing recreational facilities to nearby residents. The park includes benches, picnic tables, a BBQ grill and a picnic pavilion. Additionally, there is a children’s play area within the site. No on-site parking is provided.



### Cummings Family Park



Cummings Family Park is located at 1775 Creekside Drive. The park features picnic tables, a picnic shelter, benches, restrooms, a BBQ grill, a basketball court, a skate park, a BMX Bike Track and a dog park. The park provides parking; in addition, there is a trail connection to the Humbug-Willow Creek Parkway Trail.



## Digger and Sharon Williams Rodeo Park



Rodeo Park is located at 200 Stafford Street, next to the Folsom City Lion's Park and the Folsom Public Library. The park contains the Dan Russell Rodeo Arena, benches, a restroom, soccer fields and baseball fields. On-site parking is provided, as well as a connection to the Johnny Cash trail.



## Egloff Family Park



Egloff Family Park is located at 114 Hollyann Drive, within a residential neighborhood. This park features picnic benches and a picnic pavilion. No on-site parking is provided.



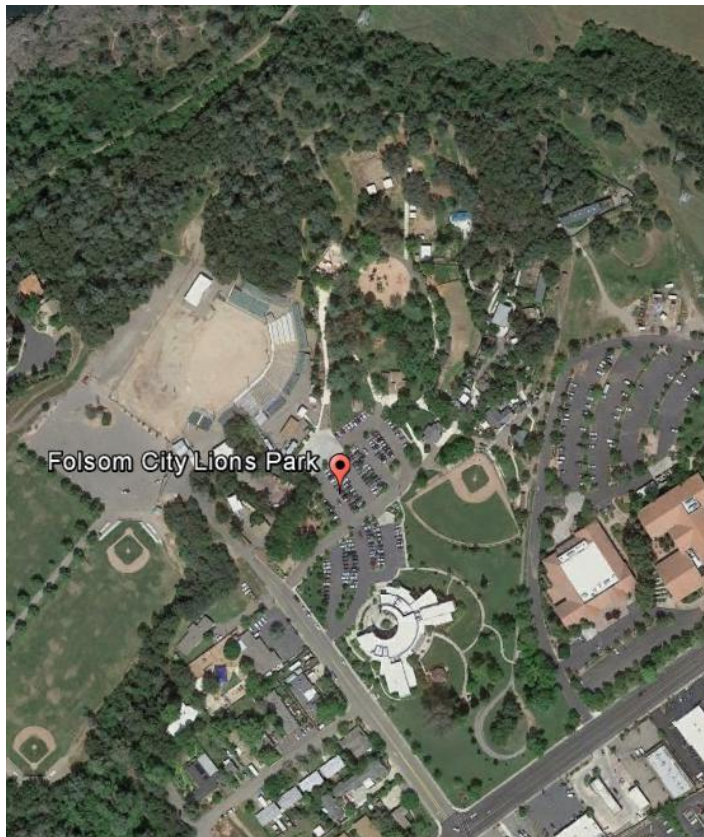
## Ernie Sheldon Youth Sports Park



Ernie Sheldon Park is located at 362 Natoma Station Drive. The park features benches, picnic tables, a picnic pavilion, a restroom, a play structure, 4 BBQ grills, 2 basketball courts, 2 tennis courts, a soccer field, 2 roller hockey courts and 2 baseball fields. On-site parking is provided as well.



## Folsom City Lion's Park



Folsom City Lions Park is located at 403 Stafford Street, bordering the Jack Kipp Civic Center. The park contains benches, picnic tables, picnic pavilions, play structures, BBQ grills, and restrooms. The park also features a miniature live-stream train, the Folsom Zoo Sanctuary, Kuntz memorial Field and the Georgia Murray Public Library.

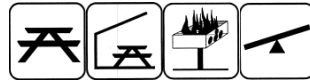




### Folsom Kids Play Park



Also known as “Castle Park,” the Folsom Kids Play Park is located at 201 Prewitt Drive, bordering a residential neighborhood. The park features picnic tables, a picnic pavilion, BBQ grills, and play structures. No on-site parking is provided, however, there is a connection to the Humbug-Willow Creek Parkway Trail and on-street parking.



### Folsom Garden Club Mini Park



The Garden Club Mini Park is located at 1105 Natoma Street. The park contains a bench and a picnic table. No on-site parking is provided. This park is maintained by the Folsom Garden Club.



## Granite Mini Park



Granite Mini Park is located at 1005 Mormon Street, bordering a residential neighborhood. The park contains a bench, picnic tables, a play structure and tennis courts. On-site parking is not provided.



## Handy Family Park



The Handy Family Park is located at 1700 Cavitt Drive. The park contains benches, picnic tables, a picnic pavilion, a BBQ Grill, restrooms, a play structure, a basketball court, and a grass soccer field. On-site parking is provided.



## Hannaford Family Park



Hannaford Family Park is located at 119 Lakeside Way. The park features benches, BBQ grills, picnic tables, a play structure, and a basketball court. No on-site parking is provided.



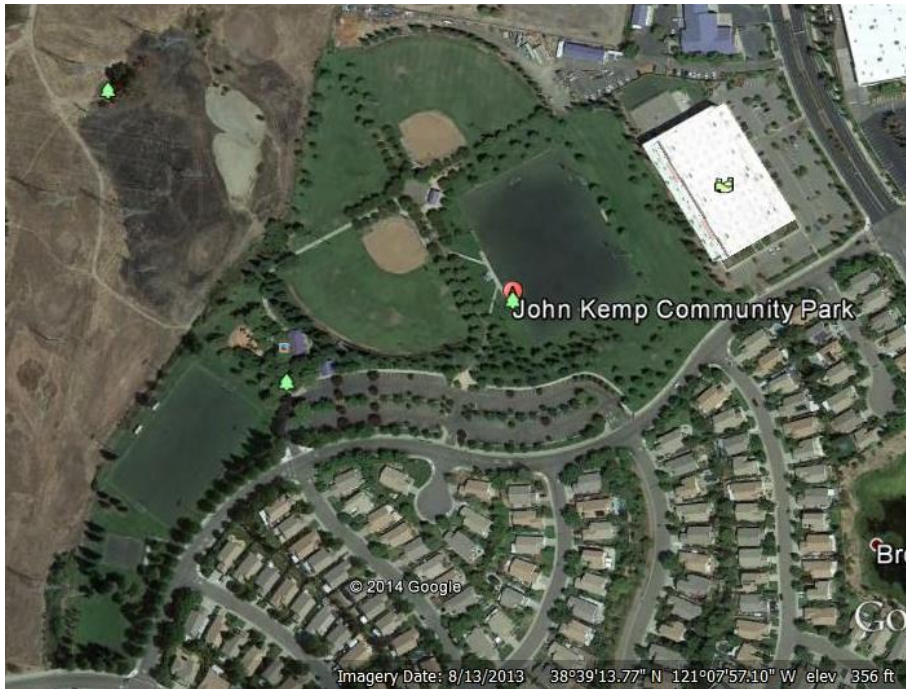
## Hazel McFarland Park



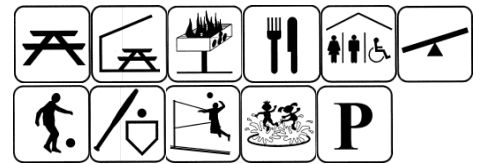
Hazel McFarland Park is located at 1875 East Natoma Street. The park features picnic tables, a picnic shelter, benches, restrooms, a BBQ grill, play structure, lighted Little League field, youth baseball fields with soccer field overlay, and parking. The park provides parking; in addition, there is a trail connection to the Humbug-Willow Creek Parkway Trail.



## John Kemp Community Park



John Kemp Community Park is located at 1322 Bundrick Drive, behind the Folsom Sports Complex. There are benches, picnic tables, a picnic pavilion, restrooms, a play structure, BBQ grills, soccer fields, softball fields, synthetic grass volleyball courts, and a water feature within the park. On-site parking is provided as well.



## Keller Mini Park



Keller Mini Park is located at 179 Keller Circle, bordering a residential neighborhood. The park features a play structure that borders picnic tables. No on-site parking is provided; however there is a connection to the Humbug-Willow Creek Parkway Trail.



## Kentfield Mini Park



Kentfield Mini Park is located at 131 Kennerly Way. The park features benches, picnic tables and a play structure. No on-site parking is provided.



## Levy Park



Levy Park is located at 701 Hunter Place. The park features benches, picnic tables, BBQ grills, play structures and a basketball court. No on-site parking is provided; however, a trail connection to the Humbug-Willow Creek Trail is to be completed.



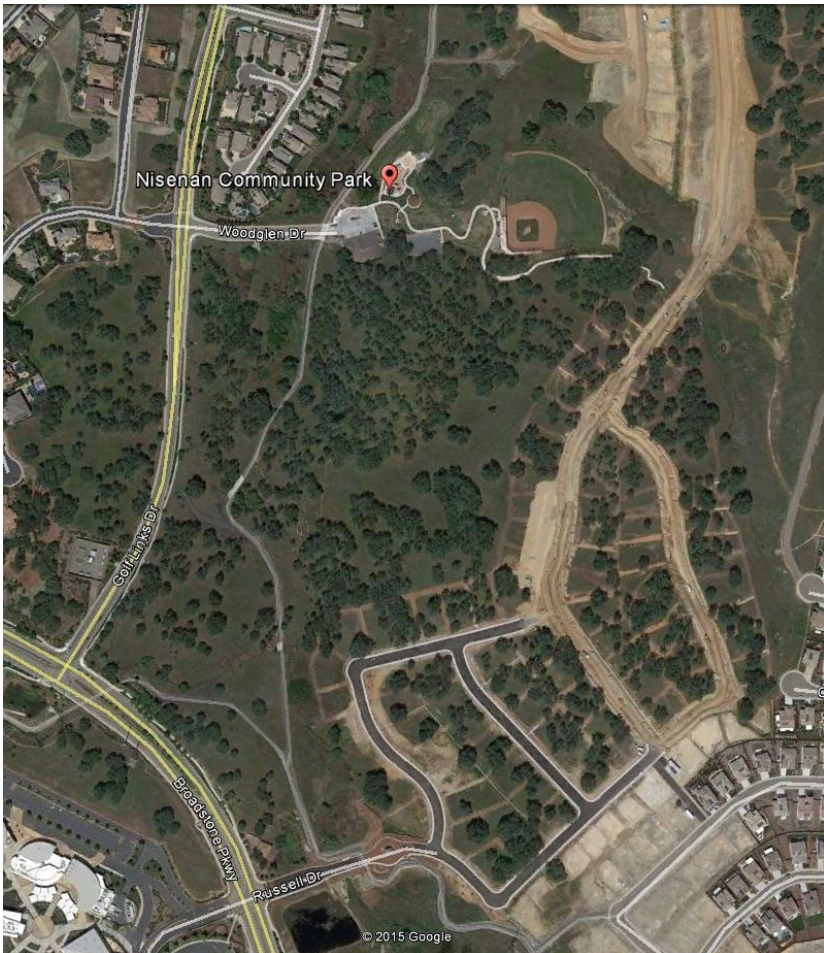
## Mann Family Park



Mann Family Park is located at 1051 Black Diamond Drive. The park contains benches, a restroom, a play structure, a lighted youth baseball field and a basketball court. No on-site parking is provided.



## Nisenan Community Park



Nisenan Community Park is located at 799 Golf Links Drive. The park contains benches, picnic tables, a picnic pavilion, BBQ grills, bathrooms, a play structure, lighted basketball court, lighted baseball field with a soccer overlay, a water feature, and a shower. On-site parking is provided, along with a trail connection to the Empire Ranch loop trail.



## Phillip C. Cohn Park



Phillip C. Cohn Park is located at 100 Prewitt Drive. The park features benches, picnic tables, a picnic pavilion, BBQ grills, a restroom, play structures, soccer fields, and baseball fields. On-site parking is provided, as well as a connection to the Humbug-Willow Creek trail



## Preserve Mini Park



Preserve Mini Park is located at 1200 Sutter Street. The park features benches, picnic tables, a picnic pavilion, a BBQ grill, a play structure, a horse pit, and a basketball half-court. No on-site parking is provided.



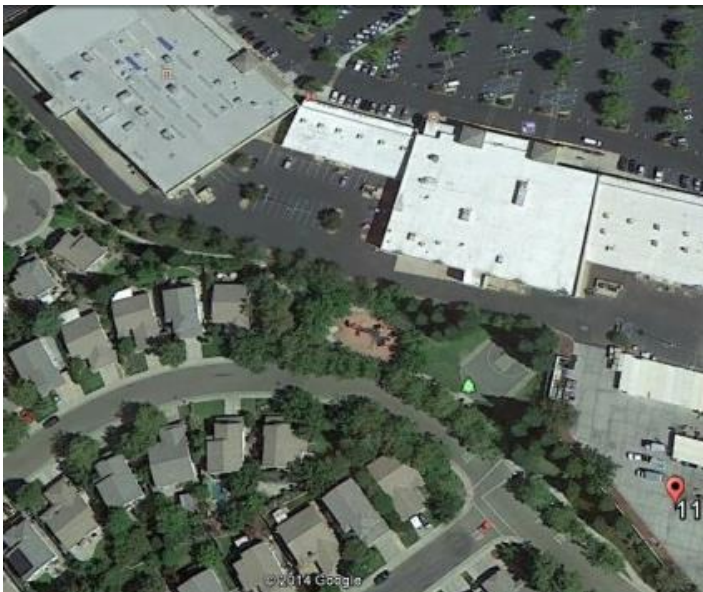
## Prewett Mini Park



Prewett Mini Park is located at 11 Kilsby Way. The park contains a picnic table. No on-site parking is provided.



## Reflections Mini Park



Reflections Mini Park is located at 111 Oxborough Drive, behind 24 Hour Fitness. The park contains 4 benches, 2 picnic tables, a BBQ grill, a play structure, and a basketball half-court. No on-site parking is provided.





## Shores Mini Park



Shores Mini Park is located at 100 Hazelmere Drive, behind Office Depot and bordering a residential neighborhood. The park contains benches, picnic tables, BBQ grills, play structures and a basketball court. On-site parking is shared with the adjacent daycare center.



## Steeplechase Mini Park



Steeplechase Mini Park is located at 179 Arbuckle Drive, bordering residential housing. The park contains a bench and play structures. No on-site parking is provided.



## Thorndike Mini Park



Thorndike Mini Park is located at 157 Thorndike Way, bordering a residential neighborhood. The park contains a bench, picnic tables, and a play structure. No on-site parking is provided; however it is immediately adjacent to the Humbug-Willow Creek trail.



## Wellfleet Mini Park



Wellfleet Mini Park is located at 219 Wellfleet Circle. The Park contains picnic tables. No on-site parking is provided; however it is immediately adjacent to the Humbug-Willow Creek trail.



## Windsor Park



Windsor Park is located at 117 Heaton Way, bordering a residential neighborhood. The park contains a bench, picnic tables, a play structure and a basketball court. No on-site parking is provided.



This page left blank intentionally