

River District Master Plan
Citizen's Advisory Committee

Folsom Lake SRA/Folsom Powerhouse SHP

**General Plan/Resource
Management Plan**

and

Road and Trail Management Plan

Gold Fields District and Folsom Sector Leadership

- **Steve Hilton** – Gold Fields District Superintendent
- **Mike Howard** – Folsom Sector Superintendent
- **Barry Smith** - GFD Chief Ranger
- **Jim Micheaels** – Senior Park & Recreation Specialist
- **Devin Swartwood** – District Interpretive Coordinator and River District CAC Representative
- **Meghan Sullivan** – GFD Natural Resources Program Manager
- **Nathan Harper** – GFD Maintenance Chief

CA State Parks Mission

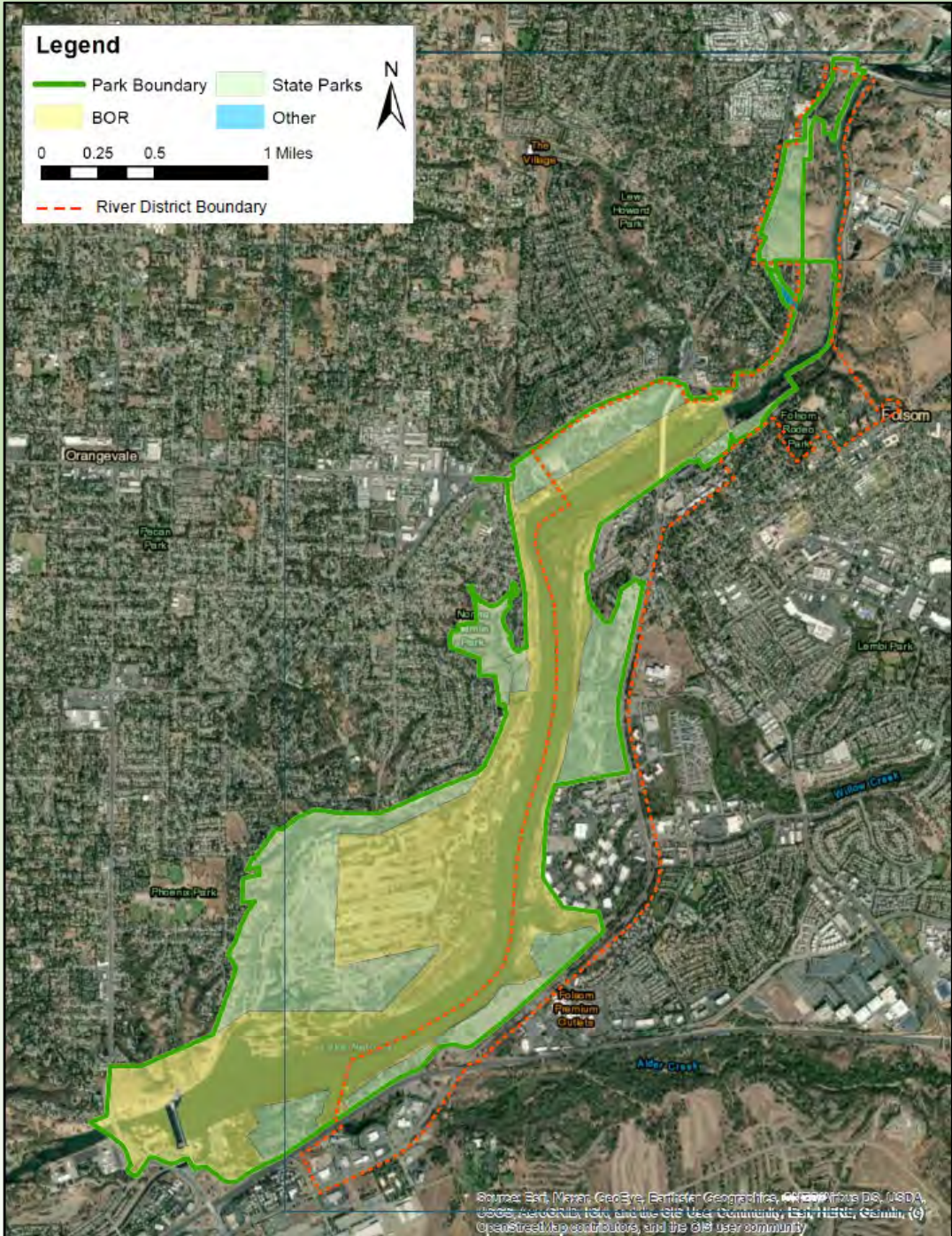
“To provide for the health, inspiration and education of the people of California by helping to preserve the state's extraordinary biological diversity, protecting its most valued natural and cultural resources, and creating opportunities for high-quality outdoor recreation.”

Legend

- Park Boundary
- State Parks
- BOR
- Other

0 0.25 0.5 1 Miles

River District Boundary



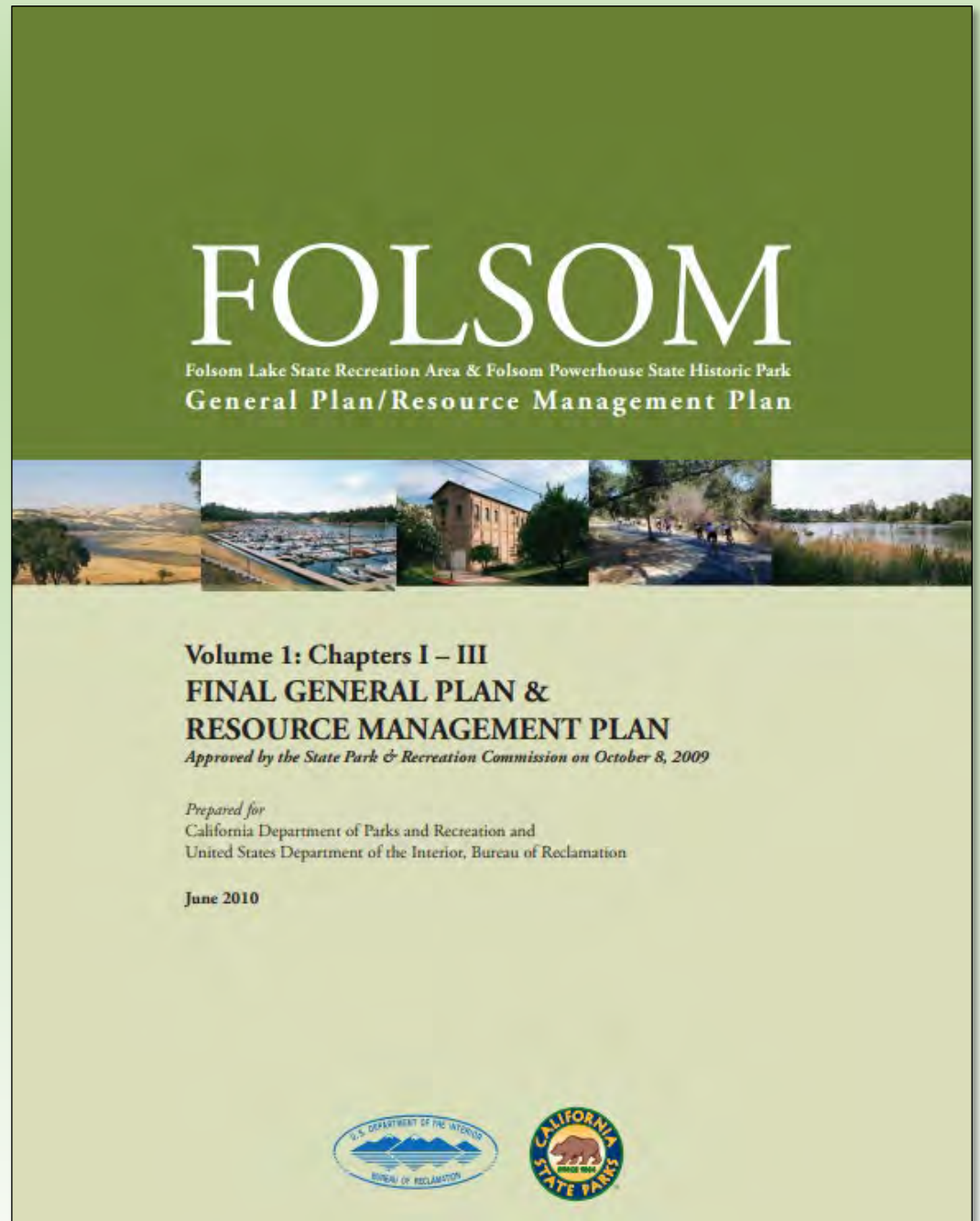
Source: Esri, Maxar, GeoEye, Earthstar Geographics, CNR AeroGlobe, USDA, USGS, AeroGRID, IGN, and the GIS User Community, Esri, HERE, Garmin, (c) OpenStreetMap contributors, and the GIS user community

FLSRA/FPSHP General Plan/ Resource Management Plan

GP/RMP available at:

https://www.parks.ca.gov/pages/21299/files/FLSRA_GP_RMP_Vol1_Final_Plan.pdf

Go to Folsom Lake SRA
webpage and find link to
GP/RMP from FLSRA
webpage.



FLSRA/FPSHP GP/RMP

Land Use Designations

Lake Natoma

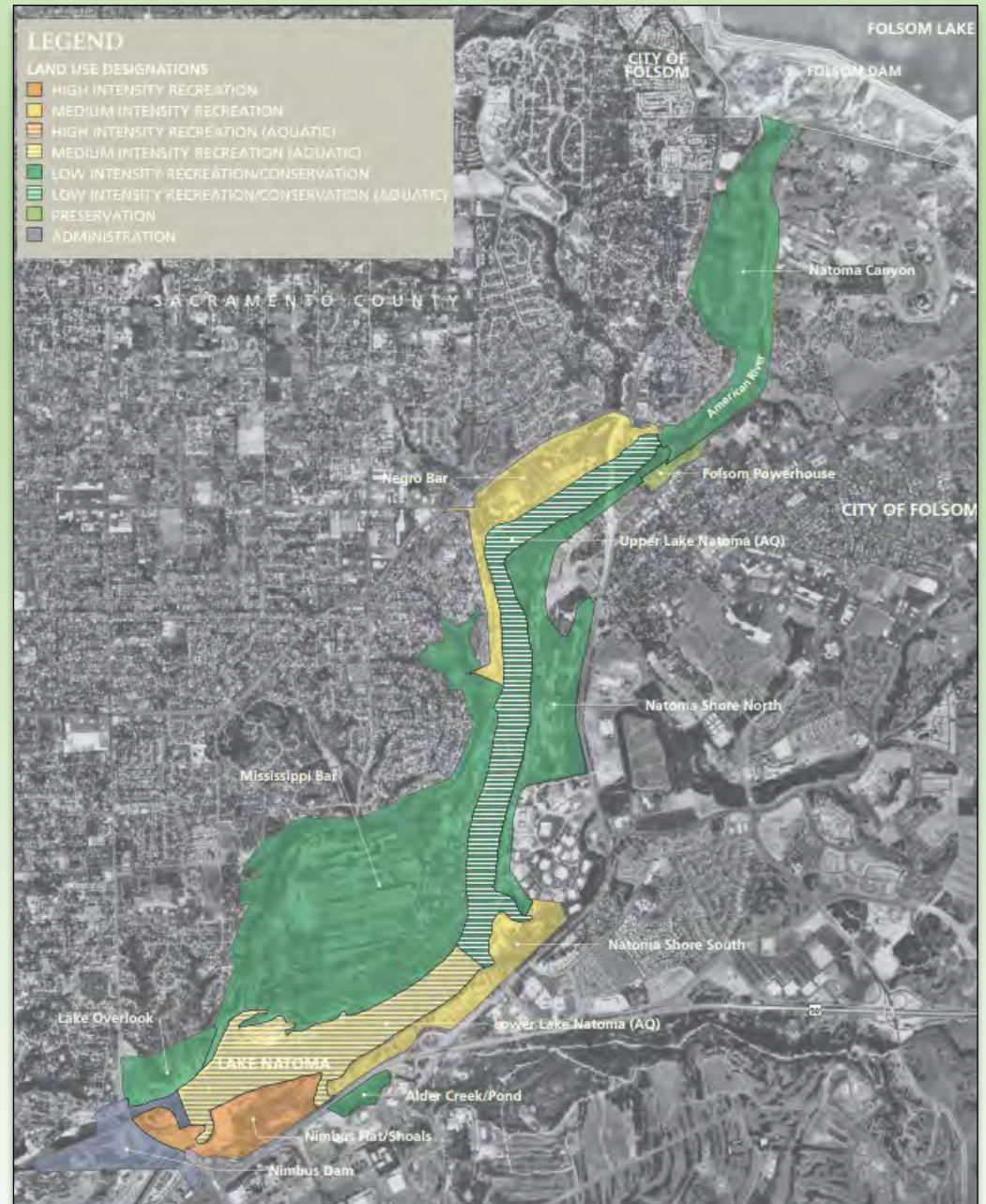
Orange – High Intensity Recreation

Yellow – Medium Intensity Recreation

Dark Green – Low Intensity Recreation/Conservation

Light Green – Preservation

Light Purple - Administration



Lake Natoma Management Zones

Land Use by Acres

Table P-1: Management Zone Land Use Summary

<i>Management Zone</i>	<i>Land Use Category (acres)</i>			
	<i>Recreation</i>	<i>Low Intensity Recreation/ Conservation</i>	<i>Preservation</i>	<i>Administration</i>
<i>Lake Natoma</i>				
1. Nimbus Flat/Shoals	119			
2. Nimbus Dam				96
3. Lake Overlook		53		
4. Mississippi Bar		750		
5. Negro Bar	143			
6. Natoma Canyon		263		
7. Folsom Powerhouse			20	
8. Natoma Shore North		263		
9. Natoma Shore South	127			
10. Alder Creek/Pond		17		
11. Lower Lake Natoma (AQ)	234			
12. Upper Lake Natoma (AQ)		256		

GP/RMP Area Specific Guidelines – A few highlights

- Develop water trail loop using lagoons at Mississippi Bar.
- Develop Black Miners Bar Cultural Center.
- Work with Sac RT and City of Folsom on pedestrian and bicycle connections from stations.
- Work with City of Folsom and other agencies on restoration of Alder Creek Pond.
- Redesign/reuse of Rainbow Rocks area parking lot.
- When change in land use at City Corporation Yard consider appropriate public access and trail connections.

Project Completed - Willow Creek Boat Launch



Project Completed - Black Miners Bar Boat Launch



New facility - Black Miners Bar Day Use Replacement



Black Miners Bar Staging Area – opportunity for new uses and facilities in partnership with Native American tribes and other groups?



Rainbow Rocks – opportunities for uses/facilities in partnership with Native American tribes



Black Miners Bar Cultural Center Location? In partnership with Native American Tribes and other groups



Alder Creek Pond – a restoration opportunity?



FLSRA/FPSHP

Road and Trail Management Plan

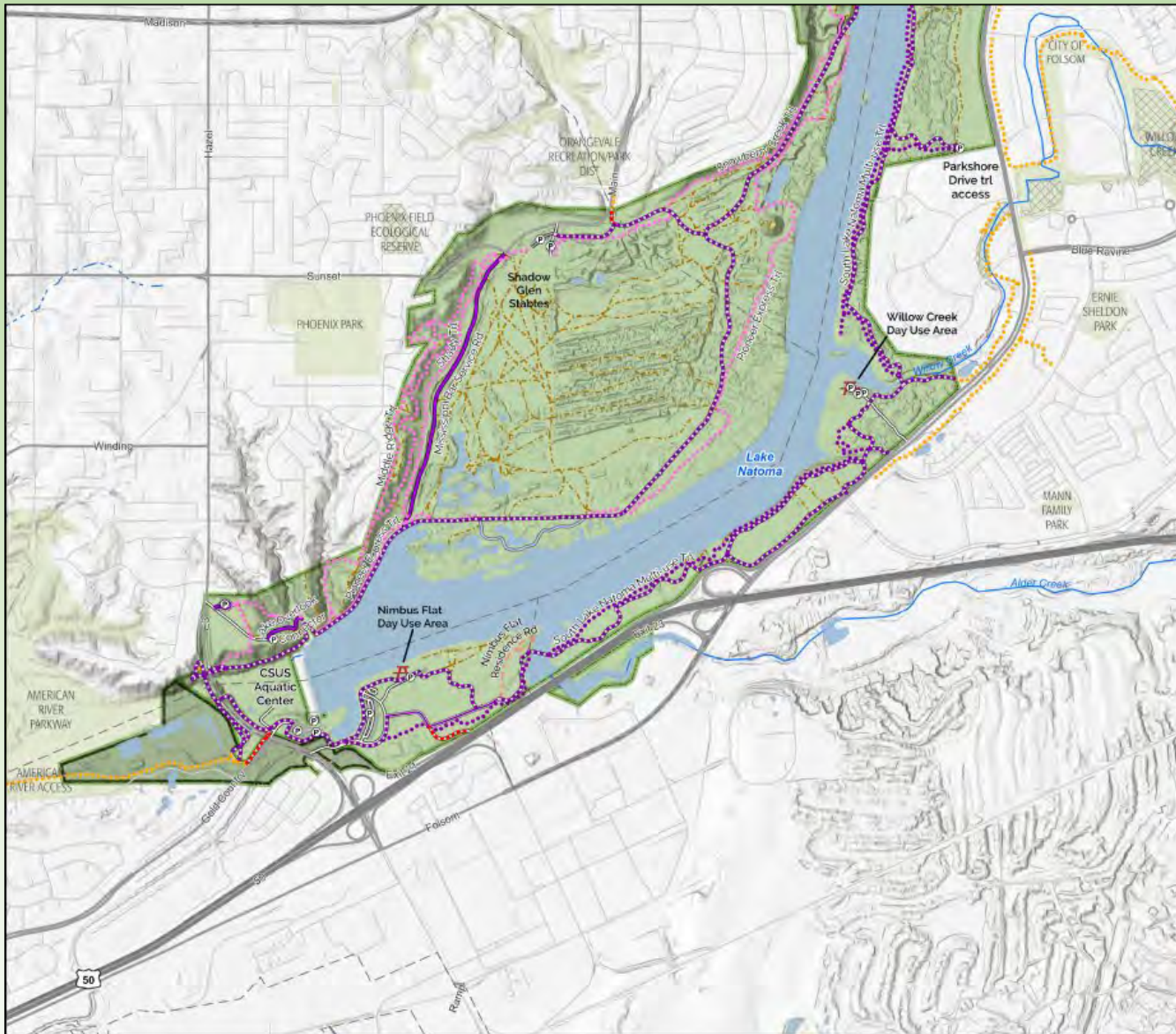
RTMP is available at:

https://www.parks.ca.gov/pages/1324/files/Final_FLSRA_RTMP_508.pdf

Go to Folsom Lake SRA
webpage and find link to the
RTMP from FLSRA webpage.



Lower Lake Natoma Existing Roads and Trails



Existing Roads and Trails

Figure 4

LOWER LAKE NATOMA TO NIMBUS DAM

- | | |
|----------------------------|----------------------------|
| State Park Trails | State Park Roads |
| Unpaved State Park Trails | Unpaved State Park Roads |
| ••••• Hike and Horse | — Hike and Horse |
| ••••• Hike, Bike and Horse | — Hike, Bike and Horse |
| Paved State Park Trails | Paved Park Service Roads |
| ••••• Hike and Bike | — Hike, Bike and Horse |
| ••••• Hike, Bike and Horse | - - - No Public Access |
| Other Trails | Public Vehicular Roads |
| — Accessible Trail | — Paved |
| ••••• Other Agency Trail | — Unpaved |
| - - - Non-System Route | Other Agency Service Roads |
| | — Not Designated |

- | | |
|-----------------------------------------------------------------------------------------------------------------------------------------------------------------|-------------------------------------------------------------------------------------------------------------------------------------------------------------------------------------------------------------------|
| <ul style="list-style-type: none"> ⊙ Parking Lot ⊠ Picnic Area — River - - - Intermittent Stream Waterbodies | <ul style="list-style-type: none"> — City ▭ County ▭ Folsom Lake State Recreation Area ▭ Administrative Areas ▭ No Public Access ▭ CA Protected Lands |
|-----------------------------------------------------------------------------------------------------------------------------------------------------------------|-------------------------------------------------------------------------------------------------------------------------------------------------------------------------------------------------------------------|

Map Page Location



Scale
1:18,080



Feet
0 900 1,800

NOTES:
Parcel boundaries are approximate and should not be considered legal descriptions. Maps are intended for study purposes only.

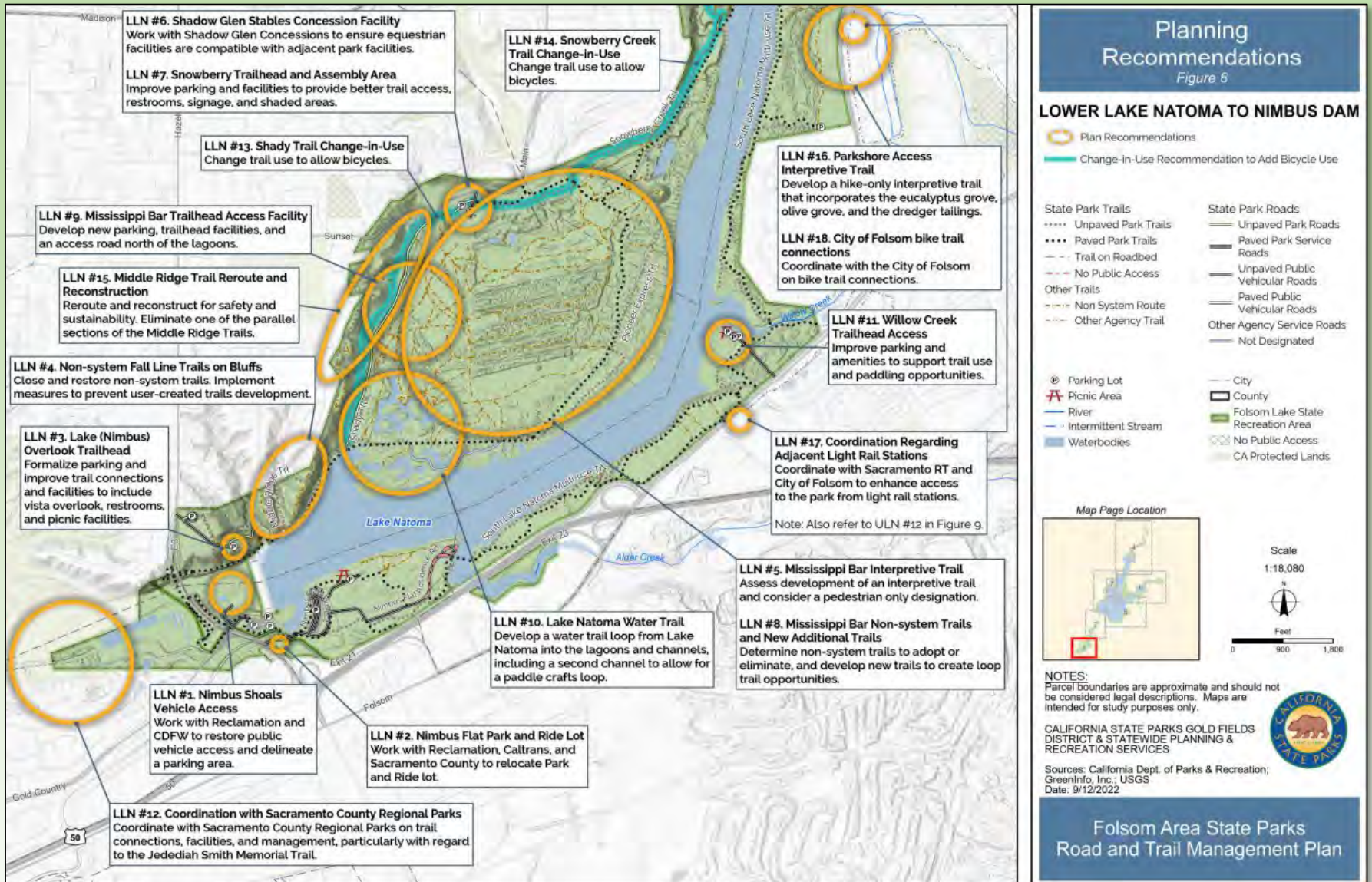
CALIFORNIA STATE PARKS GOLD FIELDS DISTRICT & STATEWIDE PLANNING & RECREATION SERVICES



Sources: California Dept. of Parks & Recreation; GreenInfo, Inc.; USGS
Date: 5/16/2022

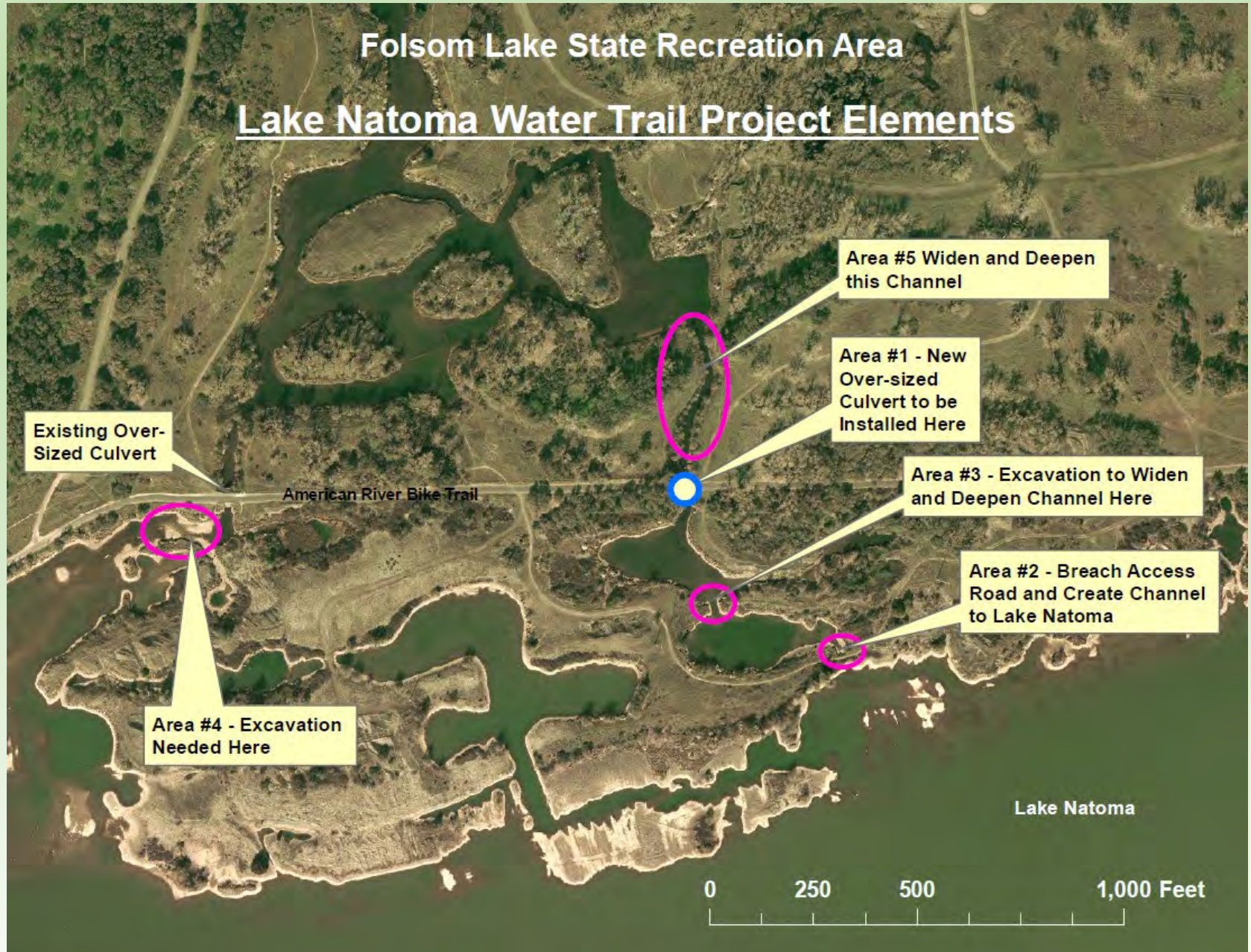
Folsom Area State Parks
Road and Trail Management Plan

Lower Lake Natoma RTMP Planning Recommendations

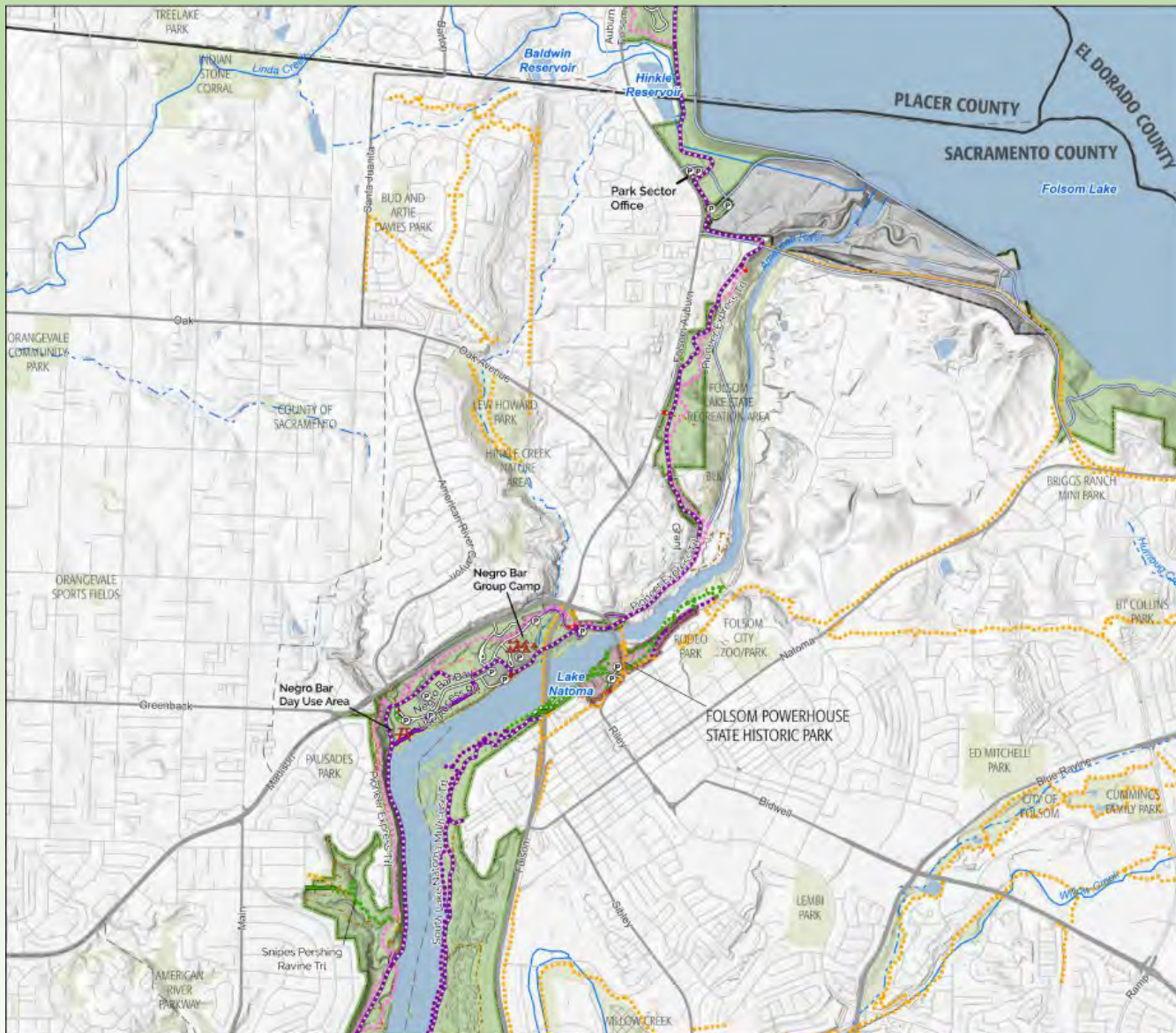


Folsom Lake State Recreation Area

Lake Natoma Water Trail Project Elements



Upper Lake Natoma Existing Roads and Trails



Existing Roads and Trails

Figure 7

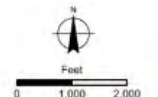
UPPER LAKE NATOMA TO FOLSOM DAM

- | | |
|---------------------------|----------------------------|
| State Park Trails | State Park Roads |
| Unpaved State Park Trails | Unpaved State Park Roads |
| ● Hike | ● Hike |
| ● Hike and Bike | ● Hike and Bike |
| ● Hike and Horse | ● Hike and Horse |
| ● Hike, Bike and Horse | ● Hike, Bike and Horse |
| Paved State Park Trails | Paved State Park Roads |
| ● Hike | ● Hike |
| ● Hike and Bike | ● Hike and Bike |
| ● Hike and Horse | ● Hike, Bike and Horse |
| ● Hike, Bike and Horse | ● No Public Access |
| Other Trails | Public Vehicular Roads |
| ● Accessible Trail | — Paved |
| ● Other Agency Trail | — Unpaved |
| ● Non-System Route | Other Agency Service Roads |
| | ● Hike, Bike and Horse |
| | ● Not Designated |
-
- | | |
|------------------------|-----------------------------------------|
| Ⓟ Parking Lot | — City |
| Ⓜ Picnic Area | ▭ County |
| Ⓜ Camp Area, Tent Only | ▭ Folsom Lake State Recreation Area |
| Ⓜ Group Camp Area | ▭ Folsom Powerhouse State Historic Park |
| — River | ▭ Administrative Areas |
| — Intermittent Stream | ▭ No Public Access |
| ▭ Waterbodies | ▭ CA Protected Lands |

Map Page Location



Scale
1:24,250



NOTES:
Parcel boundaries are approximate and should not be considered legal descriptions. Maps are intended for study purposes only.

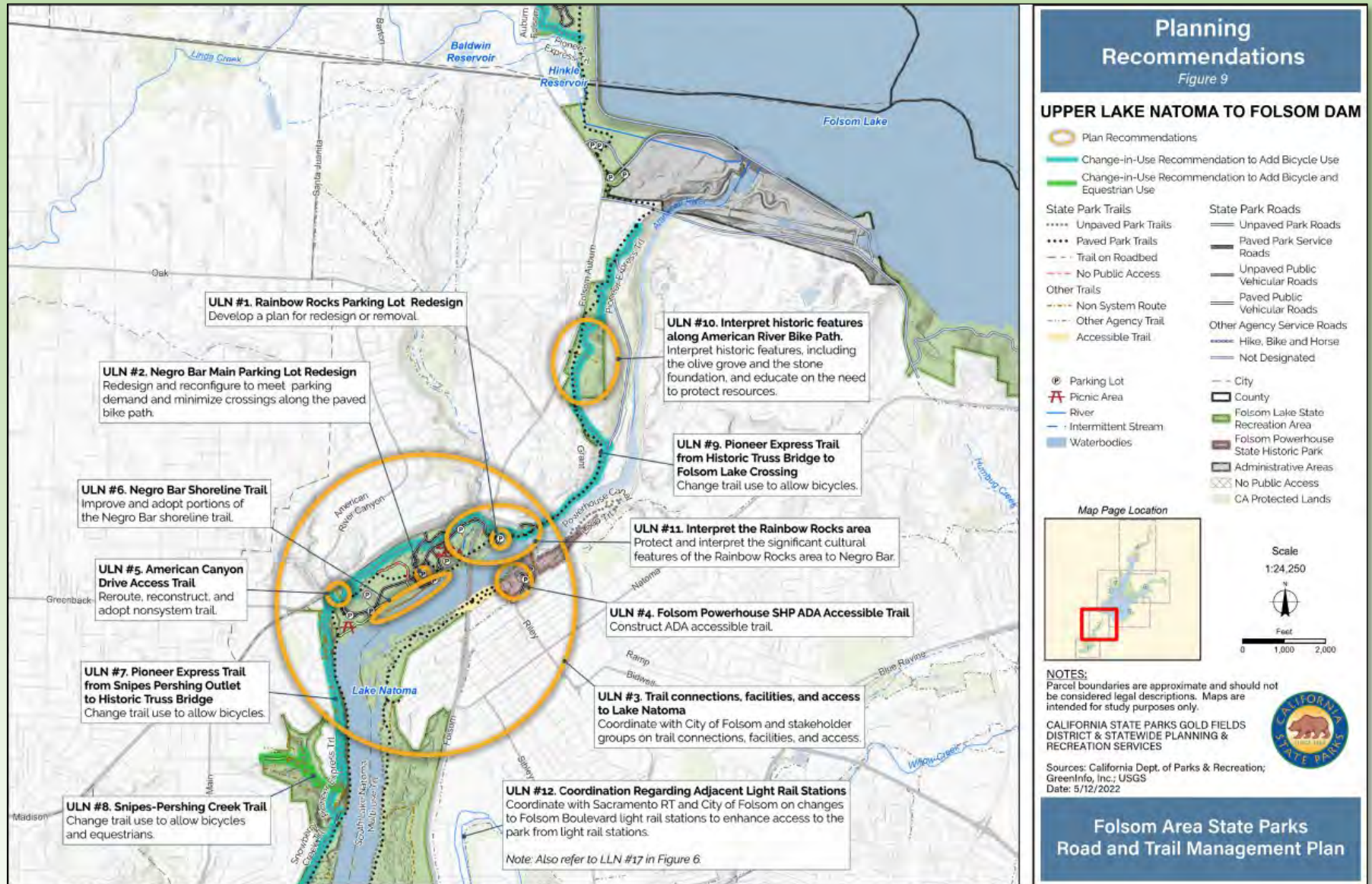
CALIFORNIA STATE PARKS GOLD FIELDS DISTRICT & STATEWIDE PLANNING & RECREATION SERVICES

Sources: California Dept. of Parks & Recreation; GreenInfo, Inc.; USGS
Date: 5/16/2022



Folsom Area State Parks
Road and Trail Management Plan

Upper Lake Natoma RTMP Planning Recommendations



Planned and Ongoing Projects

- Black Miners Bar Day Use Area Replacement (completed 2022).
- Black Miners Bar Culvert Replacement.
- Black Miners Bar Cottage Rehabilitation, Greenhouse and Native Garden.
- Parkshore Eucalyptus Grove Vegetation Management and Interpretive Panels.
- Lake Natoma Crossing Bridge Pillars Mural Project.
- Folsom Powerhouse Visitor Center Revolving Art Exhibit.
- Others?

Black Miners Bar Cottage



Lake Natoma Crossing Bridge Pillars Mural Project



Parkshore Eucalyptus Grove Vegetation Management Project

Project includes
interpretive panels
about the history
of the site.



Ongoing Events and Programs

- Electricity Fair
- Powerfest Taps and Tunes
- Earth Day
- Powerhouse Tours
- Campfire Programs (Beals Pt, Peninsula)
- Junior Ranger Program
- Interpretive hikes, paddles, other programs
- Adopt-a-Parkway, clean-up events
- Many other special events organized by others