



**RIVER DISTRICT MASTER PLAN
CITIZENS ADVISORY COMMITTEE MEETING AGENDA
October 25, 2023, 6:00 PM
Folsom Community Center, RG Smith Meeting Room
52 Stafford Street, Folsom, CA**

COMMITTEE MEMBERS:

Lynne Bailey	Rita Mukerjee Hoffstadt	Krystal Moreno
Jennifer Cabrera	Karen Holmes	Scott Muldavin
Bruce Cline	Lisa Horton	Brian Murch
Claudia Cummings	Will Kempton	Mike Reynolds
Brian Dulgar	Jennifer Lane	Edward Roza
Pat Flynn	John Lane	Devin Swartwood
Joe Gagliardi	Barbara Leary	Crystal Tobias
Deborah Grassl	Jim Lofgren	Srinivas Yanaparti

CALL TO ORDER

ROLL CALL

BUSINESS FROM THE FLOOR

Members of the public are entitled to address the Committee concerning any item within the Committee's subject matter jurisdiction. Public comments are limited to no more than three minutes. Except for certain specific exceptions, the Committee is prohibited from discussing or taking action on any item not appearing on the posted agenda.

DISCUSSION ITEMS

1. CAC Process and Ground Rules – 5 min
2. CAC Tentative Advanced Schedule and Agenda Topics (outline attached) – 10 min
 - a. RRM Scope of Work/Design Process

CAC WORK GROUP ACTIVITY/DISCUSSION

1. Opportunity and Constraints – Interactive discussion and identification of potential district assets, areas of unique opportunities to meet the intent of the General Plan, as well as district elements such as hazards, cultural and environmental resources that represent project constraints or opportunities for protection and enhancement.
 - a. Continue with River District North Area Group Discussion – 30 min
 - i. Group report back on priority Opportunities and key Constraints – 10 min
 - b. River District South Area Group Discussion – 50 min
 - i. Group report back on priority Opportunities and key Constraints – 10 min

INFORMATIONAL ITEMS

1. CAC Meeting Notes – September 27, 2023 (attached to email)
2. Cultural Resource Constraints Memo from Ascent Environmental (attached to email)
3. Summary of State Parks Stakeholder Meeting (outline attached)
4. Online Community Survey – Folsom Blvd Overcrossing <https://www.surveymonkey.com/r/FolsomOC>

NEXT MEETING DATE

Wednesday, December 13, 2023 – 6:00 pm; Folsom Community Center, RG Smith Room

ADJOURNMENT

NOTICE: Members of the public are entitled to directly address the Committee concerning any item that is described in the notice of this meeting, before or during consideration of that item. If you wish to address the Committee on an issue which is on this agenda, please complete a blue/green speaker request card, and deliver it to a staff member prior to discussion of the item. When your name is called, stand to be recognized by the Chair and then proceed to the podium. If you wish to address the Committee on any other item of interest to the public, when the Chair asks if there is any "Business from the Floor," follow the same procedure described above. Please limit your comments to three minutes or less.

In compliance with the Americans with Disabilities Act, if you are a person with a disability and you need a disability-related modification or accommodation to participate in this meeting, please contact the City Manager's Office at (916) 461-6010, or mkasama@folsom.ca.us. Requests must be made as early as possible and at least two full business days before the start of the meeting.

Any documents produced by the City and distributed to the Committee regarding any item on this agenda will be made available at the City Clerk's Counter at City Hall located at 50 Natoma Street, Folsom, California during normal business hours.

River District Master Plan Citizens Advisory Committee Discussion Item #2

Long Term Tentative Agenda Topics and Key Planning and Design Process Milestones

- Indicates tentative CAC agenda topic
- Indicates project planning milestone

CAC Meeting #3 - October 25, 2023

- Opportunities and Constraints Activity/Discussion (north and south sub-areas)
- Identification of priority opportunities (each sector)
- Identification of key constraints (each sector)
 - Cultural Resources Memo complete

CAC Meeting #4 - December 13, 2023

- Presentation and discussion regarding the Folsom Blvd Overcrossing (invited)
- Review/discussion of Environmental Constraints Analysis Technical Memorandum
- Opportunities and Constraints Activity/Discussion (central sub-area)
- Identification of priority opportunities
- Identification of key constraints
 - November/December: 1:1 stakeholder interviews conducted.
 - Online community engagement tool ***Social Pinpoint*** will go live.
 - Completion of Environmental Constraints Analysis Technical Memorandum

CAC Meeting #5 - January 24, 2024

- Review/discussion of Social Pinpoint results
- Review/discussion of Community Open House results
- Review/discussion of stakeholder interviews
- Review/discussion of economic conditions/opportunities/case studies
- Review/integration of priority opportunities with FLSRA General Plan
- Prioritization and recommendation of conceptual design study Key Sites to the City Council
 - Community Open House (date TBD)
 - Economic conditions/opportunities/case studies memo

CAC Meeting #6 - February 28, 2024

- Review of City Council direction regarding Key Sites
- Prioritization of remaining opportunity ideas
 - City Council mid-project review and recommendation regarding Key Sites
 - Key Site conceptual design begins

CAC Meeting #7 – March/April 2024 (date TBD with alignment of consultant production schedule)

- Review and discussion of preliminary Key Site design concepts
- Review and discussion of preliminary Key Site renderings
 - Preliminary Key Site design concepts
 - Preliminary Key Site renderings (sketch viewpoints)

CAC Meeting #8 – May 22, 2024

- Review and provide comments on Draft Master Plan
- Review administrative draft of CEQA analysis
 - Completion of Key Site design plans
 - Completion of Key Site renderings
 - Preparation of Draft Master Plan
 - Preparation of administrative Draft of CEQA analysis
 - Presentations to PRC, HDC, and PC

CAC Meeting #9 – June/July 2024 (date TBD with alignment of consultant production schedule)

- Review and recommendation of the Master Plan to the City Council
 - Completion of Final Master Plan and CEQA analysis
 - Completion of Vision Poster

August/September 2024

- Presentation to the City Council
- City Council approval of the River District Master Plan

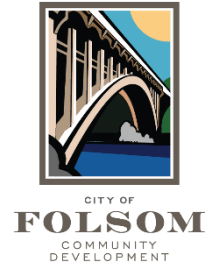
Summary of State Parks Stakeholder Meeting

Discussion Item #3

On September 27, 2023, staff and the consultant team met with senior leadership of the Gold Fields District who manage the Folsom Lake State Parks Recreation Area, including Lake Natoma and the American River within the River District planning area. The following is an outline summary of the discussion.

- The Gold Fields District (State Parks) has a 25-year license agreement with the federal Bureau of Reclamation (BOR) to manage the FLSRA. Agreement expires in 2037. They have had this responsibility since about 1958.
- The BOR defers to State Parks on recreation matters.
- Each agency has differing roles relative to managing resources.
- State Parks is allowing the direction of recreation operations to occur organically vs driving a certain direction, i.e., Native American issues, stories and culture, and the blending of international cultures that occurred as a result of the Gold Rush are current high priorities.
- State Parks is emphasizing adaptive reuse vs new construction of facilities.
- State Parks manages an operating agreement with the CSUS Alumni Association for the Aquatic Center.
- The FLSRA General Plan discusses “carrying capacity” as an issue, but does not identify specific numbers, more a process for identifying issues.
 - Parking is key (evidenced by recent completion of Black Miners Bar parking lot and picnic area...VERY popular and well-used)
 - Trails are more difficult to manage relative to carrying capacity
- An “upper lake” boathouse may be possible; however, when it was identified in the FLSRA General Plan, the extraordinary popularity of paddle boarding wasn’t foreseen. State Parks views the lower lake area of competitive rowing and recreation sailing, and the upper lake area of sun bathing and recreational paddling/kayaking as appropriate at this time. Mapping of recreational water uses likely needed.
- State Parks was asked about the opportunity to develop a higher-end RV campground in the old and under-utilized group camping area. Answer was not enthusiastic. This location is one of several considered for a future visitors/interpretive center.
- State Parks was asked about the potential of an improved pedestrian connection from the Cliff House restaurant to Black Miners Bar. Answer included discussion of vital Native American cultural resources in the area...likely a difficult concept to implement.
- State Parks was asked about the feasibility of long-term land lease agreements for the purpose of economic development in support of lake-related activities. Answer was not enthusiastic. Various concessionaire agreements provide commercial services consistent with the FLSRA General Plan.
- The FLSRA General Plan includes a visitors/interpretive center in the Lake Natoma area. This may be a partnership opportunity between State Parks, the City, Native American Tribes and other cultural and environmental organizations.
- State Parks was asked about their knowledge of the Natoma Ground Sluice Diggings (rich resource area directly adjacent to the River District). They acknowledge awareness, but have not seen the land area and resource. Staff committed to offering a field trip. May be another partnership opportunity that could add to the multi-cultural story of Gold Rush activities.

River District Master Plan Citizens Advisory Committee
Meeting Notes
RG Smith Room, Folsom Community Center
52 Natoma Street, Folsom, CA
September 27, 2023
6:00 p.m.



Committee Members:

Lynne Bailey	Rita Mukerjee Hoffstadt	Krystal Moreno
Jennifer Cabrera	Karen Holmes	Scott Muldavin
Bruce Cline	Lisa Horton	Brian Murch
Claudia Cummings	Will Kempton	Mike Reynolds
Brian Dulgar	Jennifer Lane	Edward Roza
Pat Flynn	John Lane	Devin Swartwood
Joe Gagliardi	Barbara Leary	Crystal Tobias
Deborah Grassl	Jim Lofgren	Srinivas Yanaparti

1. Call to Order – 6:00 p.m.

2. Roll Call

Present: Lynne Bailey, Bruce Cline, Claudia Cummings, Brian Dulgar, Pat Flynn, Joe Gagliardi, Deborah Grassl, Lisa Horton, Will Kempton, Jennifer Lane, John Lane, Barbara Leary, Jim Lofgren, Krystal Moreno, Brian Murch, Mike Reynolds, Devin Swartwood, Crystal Tobias, Srinivas Yanaparti

Absent: Jennifer Cabrera, Rita Mukerjee Hoffstadt, Karen Holmes, Scott Muldavin, Edward Roza

3. Business from the Floor - Members of the public are entitled to address the Committee concerning any item within the Committee’s subject matter jurisdiction. Public comments are limited to no more than three minutes. Except for certain specific exceptions, the Committee is prohibited from discussing or taking action on any item not appearing on the posted agenda.

- a. Terry Sorensen expressed the importance that the roles and lines of authority of the committee, staff, and consultant are clearly established.

4. Discussion Items

a. RRM Design Group Scope of Work and Milestones

- i. Phase 1: October-November 2023
 - a. Introduction and overview
- ii. Phase 2: November-December 2023
 - a. Community outreach and stakeholder interviews
- iii. Phase 3: January-March 2024
 - a. Identify key concepts based on Phase 2 feedback
 - b. Potential mid-project review with the City Council
- iv. Phase 4: April-August 2024
 - a. Master plan creation and vision

- v. Public Comment: Betsy Weiland of the Save the American River Association questioned how the committee will make sure they include feedback and consideration from all surrounding communities for the Master Plan, not only from Folsom residents.
 - b. **What does a master plan look like?**
 - c. **Preliminary River District Master Plan Table of Contents**
 - i. Outline and examples provided in presentation, available online.
 - d. **Common themes from the August 31 worksheet exercise**
5. **CA State Parks Presentation – Folsom Lake State Recreation Area General Plan and Road and Trail Management Plan**

Presentation by Jim Michaels (Senior Park & Recreation Specialist) and Devin Swartwood (District Interpretive Coordinator and River District CAC Representative).

Jim and Devin introduced the State Parks existing General Plan/Resource Management Plan for the Folsom/River District area. They also highlighted a few recent and proposed projects within the River District that fall within the scope of their General Plan.

6. **Opportunities and Constraints**
- a. Citizens Advisory Committee
 - i. Process and Ground Rules (use of the “dust bin, parking lot, continue/approve” voting blocks for certain discussion items). **This item was continued to next meeting.**
 - b. Interactive committee work group discussion and identification of potential district assets, areas and unique opportunities to meet the intent of the General Plan, as well as district elements such as hazards, cultural and environmental resources that represent project constraints or opportunities for protection and enhancement.
 - i. Breakout groups started brainstorming ideas, discussion with full group will continue at next meeting.

7. **Informational Items**

8. **Next Meeting Date** – October 25, 2023

9. **Adjournment** – 8:16 p.m.

NOTICE: Members of the public are entitled to directly address the Committee concerning any item that is described in the notice of this meeting, before or during consideration of that item. If you wish to address the Committee on an issue which is on this agenda, please complete a blue/green speaker request card, and deliver it to a staff member prior to discussion of the item. When your name is called, stand to be recognized by the Chair and then proceed to the podium. If you wish to address the Committee on any other item of interest to the public, when the Chair asks if there is any “Business from the Floor,” follow the same procedure described above. Please limit your comments to three minutes or less.

In compliance with the Americans with Disabilities Act, if you are a person with a disability and you need a disability-related modification or accommodation to participate in this meeting, please contact the City Manager’s Office at (916) 461-6010, or mkasama@folsom.ca.us. Requests must be made as early as possible and at least two full business days before the start of the meeting.

Any documents produced by the City and distributed to the Committee regarding any item on this agenda will be made available at the City Clerk’s Counter at City Hall located at 50 Natoma Street, Folsom, California during normal business hours.



Memo

455 Capitol Mall, Suite 300
Sacramento, CA 95814
916.444.7301

Date: October 18, 2023

To: Lief McKay and Deborah Jewell, RRM Design Group

From: Lily Bostrom, Adam Lewandowski, and Amber Grady (Architectural Historian), Ascent

Subject: Folsom River District – Cultural Resource Constraints

Purpose

This cultural resources review documents the results of the cultural resources records search conducted for the Folsom River District Master Plan Area (plan area), located in Folsom, Sacramento County (see Figure 1). The purpose of this report is to provide a preliminary review of the potential for cultural resources in the plan area. Most of the plan area was previously surveyed for the presence of cultural resources (Figure 2). This report does not include Native American Traditional Cultural Resources. This report is not intended to assess the potential impacts to these resources associated with any future projects within the Folsom River District in accordance with the California Environmental Quality Act (CEQA) guidelines at Title 14 CCR Section 15064.5.

Due to the sensitivity of archaeological resources, their locations are exempt from public disclosure. As such, Appendix A, which maps out the cultural resources in the plan area, has been made confidential.

Regulatory Background

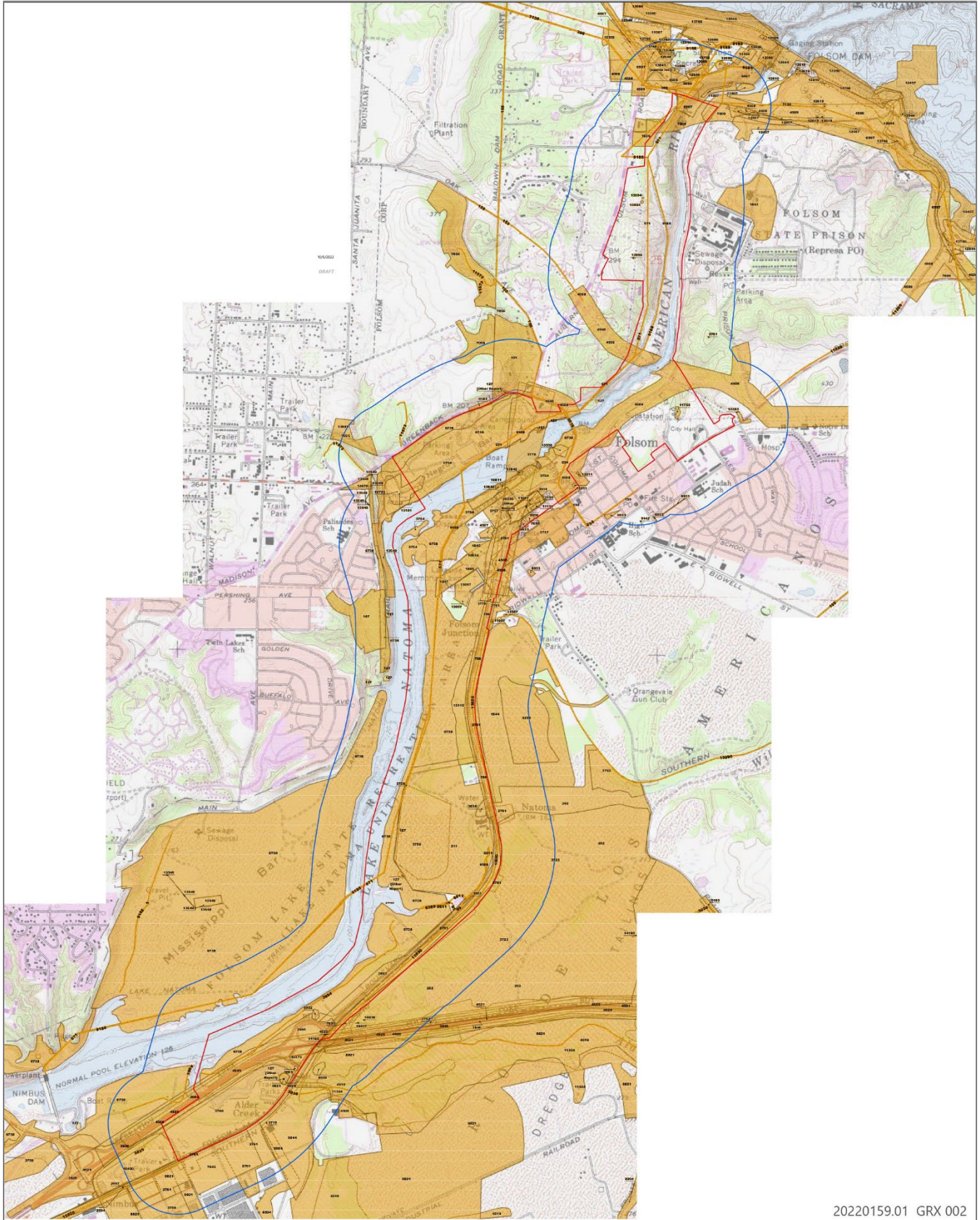
CEQA requires public agencies to consider the effects of their actions on “historical resources,” and “unique archaeological resources.” Pursuant to Public Resources Code (PRC) Section 21084.1, a “project that may cause a substantial adverse change in the significance of an historical resource is a project that may have a significant effect on the environment.” Section 21083.2 requires agencies to determine whether projects would have effects on unique archaeological resources. Under State CEQA Guidelines Section 15064.5(a), historical resources include the following:

- 1) A resource listed in or determined to be eligible by the State Historical Resources Commission for listing in, the California Register of Historical Resources (CRHR) (PRC Section 5024.1).
- 2) A resource included in a local register of historical resources, as defined in PRC Section 5020.1(k) or identified as significant in a historical resource survey meeting the requirements of PRC Section 5024.1(g), will be presumed to be historically or culturally significant. Public agencies must treat any such resource as significant unless the preponderance of evidence demonstrates that it is not historically or culturally significant.
- 3) Any object, building, structure, site, area, place, record, or manuscript that a lead agency determines to be historically significant or significant in the architectural, engineering, scientific, economic, agricultural, educational, social, political, military, or cultural annals of California may be considered to be a historical resource, provided the lead agency’s determination is supported by substantial evidence in light of the whole record. Generally, a resource will be considered by the lead agency to be historically significant if the resource meets the criteria for listing in the CRHR (PRC Section 5024.1).

- 4) The fact that a resource is not listed in or determined to be eligible for listing in the CRHR, not included in a local register of historical resources (pursuant to PRC Section 5020.1[k]), or identified in a historical resources survey (meeting the criteria in PRC Section 5024.1[g]) does not preclude a lead agency from determining that the resource may be a historical resource as defined in PRC Sections 5020.1(j) or 5024.1.

CEQA also requires lead agencies to consider whether projects will affect unique archaeological resources. PRC Section 21083.2(g) states that “unique archaeological resource” means an archaeological artifact, object, or site about which it can be clearly demonstrated that, without merely adding to the current body of knowledge, there is a high probability that it meets one or more of the following criteria:

1. Contains information needed to answer important scientific research questions and that there is a demonstrable public interest in that information.
2. Has a special and particular quality such as being the oldest of its type or the best available example of its type.
3. Is directly associated with a scientifically recognized important prehistoric or historic event or person.



Source: Adapted by Ascent in 2023.

Figure 2 Survey Coverage



Findings

On August 8, 2023, a records search for the plan area and a 0.25-mile radius was conducted at the North Central Information Center (NCIC), at California State University, Sacramento (File No. SAC-23-152). The following information was reviewed:

- ▶ site records of previously recorded cultural resources,
- ▶ previous cultural studies,
- ▶ National Register of Historic Places and CRHR listings,
- ▶ the California Historic Resources Inventory System (CHRIS),
- ▶ Built Environment Resource Directory for Sacramento County, and
- ▶ Archaeological Determination of Eligibility for Sacramento County.

The research revealed that 121 resources have been previously recorded within the plan area; including both archaeological and built environment resources (Tables 1 and 2 respectively). These resources consist of prehistoric (isolates, bedrock mortars, occupation/village sites, and mortar cupules) and historic-era (mining districts, railroads, commercial and residential buildings, hydroelectric systems, bridges, and landscapes) resources. An additional 83 resources were identified in the 0.25-mile buffer in the CHRIS records search.

The tables below provide primary numbers/trinomials, eligibility status, age (prehistoric or historic), attribute code(s), and the source of this information for each of the resources. All the resources have been documented to varying degrees over the past 30+ years; however, the majority have not been evaluated against any eligibility criteria (NRHP, CRHR, or local). Also, very few of these resources have been evaluated under all the necessary eligibility criteria to determine if they would be considered historical resources for the purposes of CEQA or historic properties for the purposes of NEPA/Section 106 review.

Table 1 Previously Recorded Archaeological Resources Within the Folsom River District Master Plan Area

Primary Number/Trinomial	Eligibility Status	Age	Attribute Code(s)	Source
P-34-000019	Not evaluated	Prehistoric-era	AH16 (Other)	1990 (K. Syda, C. Thomas, PAR Environmental Services, Inc.)
P-34-000020	Not evaluated	Prehistoric-era	AH04 (Privy pits/trash scatters/dumps)	1989 (M. Peak, Peak and Associates, Inc.)
P-34-000193 / CA-SAC-000166	Not evaluated	Prehistoric-era	AH09 (Mines/quarries/tailings) - Natoma Site	(Heizer); 1992 (Jim Woodward, Nancy H. Evans, California Department of Parks and Recreation, Cultural Heritage Section)
P-34-000202 / CA-SAC-000175	Not evaluated	Prehistoric-era	---	1952 (J. Davis, Sacramento State College)
P-34-000203 / CA-SAC-000176	Not evaluated	Prehistoric-era	AH04 (Privy pits/trash scatters/dumps)	1952 (T. Thorp, Sacramento State College); 1992 (J. Davis, Ann S. Peak and Associates); 2002 (R. Deis, EDAW, Inc.)
P-34-000204 / CA-SAC-000177	Not evaluated	Prehistoric-era	AH16 (Other)	1952 (J. Davis, Ann S. Peak and Associates)
P-34-000205 / CA-SAC-000178	Not evaluated	Prehistoric-era	AH04 (Privy pits/trash scatters/dumps)	1952 (T. Thorp); 1958 (Schrader, McGee, ARJC)
P-34-000206 / CA-SAC-000179	Not evaluated	Prehistoric-era	AH04 (Privy pits/trash scatters/dumps)	1952 (A.E.T.)
P-34-000208 / CA-SAC-000181	Not evaluated	Prehistoric-era	---	1952 (A.E.T., Sacramento State College)
P-34-000335/ P-34-009/ P-34-008 / CA-SAC-000308H	CRHR eligible, City of Folsom CRI listed	Historic-era	AH02 (Foundations); AH06 (Water conveyance system); AH09 (Mines/quarries/tailings) – Folsom Mining District/American River Placer Mining District	1969 (K.G.S.); 1989 (M. Peak, R. Gerry, Peak & Associates, Inc.); 1992 (Melinda Peak, James Oglesby, Marvine Marine, Matthew Waters, Peak & Associates, Inc.); 1992 (Mary L. Manieri); 1992 (S.G. Lindstrom, L. Lundemo, M. Panelli, J. Wells, N. Wilson, P.O. Box 3324, Truckee, CA 96160); 1994 (R. Gerry, Peak & Associates, Inc.); 1995 (S. Flint); 1999 (Melinda A. Peak, Peak & Associates, Inc.); 2002 (K. Carpenter, Far Western Anthropological Research Group, Inc.); 2004 (John Nadolski, Kurt Lambert, Pacific Municipal Consultants); 2005 (Ric Windmiller); 2006 (Ric Windmiller); 2007 (Tina Pitsenberger, Pacific Municipal Consultants); 2007 (Michael Lawson, Peak & Associates, Inc); 2011 (C. Arrington); 2012 (S. Pappas, ECORP Consulting, Inc); 2013 (A. Parez, B. Lund, L. Fisher, Associate State Archaeologist); 2015 (Charlane Gross, Analytical Environmental Services); 2020 (Coleman, Talcott, Wolpert, Solano Archaeological Services);

Primary Number/Trinomial	Eligibility Status	Age	Attribute Code(s)	Source
				2021 (D. Stapleton, Natural Investigations Company); 2023 (Melissa Chavez, Environmental Resource Compliance LLC)
P-34-000372 / CA-SAC-000345H	Not evaluated	Historic-era	AH07 (Road/trail/railroad bed) - California Central Railroad	1977 (John Madsen, Archaeological Study Center); 1991 (S. Okamura Johnson)
P-34-000391 / CA-SAC-000364H	Not evaluated	Historic-era	AH02 (Foundations); AH03 (Landscaping) - Nicholson Residence Site	1998 (W.L. Norton, Jones & Stokes Associates); 1998 (Dina M. Coleman, Sunshine Psota, Anthropological Studies Center, Sonoma State University)
P-34-000392 / CA-SAC-000365H	Not evaluated	Historic-era	AH02 (Foundations)	1998 (W.L. Norton, Jones & Stokes Associates)
P-34-000439 / CA-SAC-000412H	Not evaluated	Historic-era	AH07 (Road/trail/railroad bed) - Sacramento, Placer & Nevada Railroad	1986 (Dan Foster, John Foster, Foothill Archaeological Services); 1990 (Neal Neuenschwander, Peak & Associates, Inc.); 1991 (Judith Marvin-Cunningham, PAR Environmental Services); 2006 (M. Nolte and J. Dougherty)
P-34-000441 / CA-SAC-000414	Ineligible – NRHP and CRHR	Historic-era	AP04 (BRM/milling feature)	1987 (J.D. Tordoff); 1990 (K. Syda, C. Thomas); 1992 (Steve Heipel et al, PAR Environmental); 2001 (J. Berg, Far Western)
P-34-000442 / CA-SAC-000415	Ineligible – NRHP and CRHR	Historic-era	AH16 (Other)	1987 (J.D. Tordoff, State Archaeologist); 2002 (B. Ludwig, EDAW, Inc.); 2002 (R. Deis, EDAW, Inc.)
P-34-000453 / CA-SAC-000426H	NRHP eligible, CRHR listed, City of Folsom CRI listed	Historic-era	AH04 (Privy pits/trash scatters/dumps) – Chinese Community/Chinatown	1989 (M. Peak and R. Gerry, Peak & Associated, Inc.); 1991 (K. Syda and L. Shapiro); 1992 (K. Syda, M. Maniery, D. Kiser, S. Dies, J. Brown, and L. Fryman, PAR Environmental Services Inc); 2002 (R. Deis); 2011 (Cindy Arrington)
P-34-000456 / CA-SAC-000429H	NRHP eligible, CHL, and NHL	Historic-era	AH06 (Water conveyance system) -; AH07 (Road/trail/railroad bed) -; AH08 (Dam); AH15 (Standing structure) – Folsom hydroelectric power system	1989 (R. Gerry, M. Peak, Peak & Associates, Inc.); 1990 (R. Gerry, M. Peak, Peak & Associates, Inc.)
P-34-000594 / CA-SAC-000501H	Not evaluated	Historic-era	AH02 (Foundations)	1987 (Frank Lortie, Judy Tordoff, CA Dept. of Parks and Recreation, Inland Region)
P-34-000595 / CA-SAC-000502H	Not evaluated	Historic-era	AP04 (BRM/milling feature)	1978 (Olsen, Foster)
P-34-000625 / CA-SAC-000509	Not evaluated	Prehistoric-era	AP04 (BRM/milling feature)	1980 (L. Motz, M. Rondeau, and S. Dondero); 2001 (John Berg, Far Western Anthropological Research Group, Inc.)

Primary Number/Trinomial	Eligibility Status	Age	Attribute Code(s)	Source
P-34-000627	Ineligible - NRHP	Prehistoric-era	AP16 (Other)	1995 (K. Syda, K. McIvers, PAR Environmental Services, Inc.)
P-34-000632 / CA-SAC-000511	Not evaluated	Prehistoric-era	AP04 (BRM/milling feature)	1980 (L. Motz, M. Rondeau, and S. Dondero)
P-34-000633 / CA-SAC-000512H	Not evaluated	Historic-era	AH02 (Foundations); AH16 (Other)	1980 (L. Motz, S. Dondero, and M. Rondeau, Archaeological Study Area); 1990 (K. Syda sand C. Thomas, PAR Environmental Services)
P-34-000634 / CA-SAC-000513	Not evaluated	Prehistoric-era	AP04 (BRM/milling feature)	1980 (L. Motz, M. rondeau, and S. Dondero, ASC, CSUS)
P-34-000636 / CA-SAC-000515H	Not evaluated	Historic-era	AH02 (Foundations); AH09 (Mines/quarries/tailings) -	1980 (L. Motz, D. Oconnor, S. Donderp, ASC, CSUS)
P-34-000811	Not evaluated	Prehistoric-era	AP09 (Burial); AP16 (Other)	2000 (Ric Windmiller, Consulting Archaeologist)
P-34-000861 / CA-SAC-000660	Not evaluated	Historic-era	AH16 (Other)	2001 (John Berg, Far Western Anthropological Research Group)
P-34-000862 / CA-SAC-000661	Not evaluated	Historic-era	AH04 (Privy pits/trash scatters/dumps); AH16 (Other)	2001 (J. Berg, M. Darcangelo, Far Western Anthropological Research Group)
P-34-001384	Not evaluated	Prehistoric-era	AH16 (Other)	2002
P-34-001386 / CA-SAC-000843H	Not evaluated	Historic-era	AH02 (Foundations)	2002 (R. Deis, EDAW, Inc.)
P-34-001387 / CA-SAC-000844H	Not evaluated	Historic-era	AH02 (Foundations); AH04 (Privy pits/trash scatters/dumps)	2002 (R. Deis, EDAW, Inc.)
P-34-001388	Ineligible - NRHP	Historic-era	AH04 (Privy pits/trash scatters/dumps)	2002 (Richard Deis, EDAW, Inc.)
P-34-001440 / CA-SAC-000869	Not evaluated	---	AP04 (BRM/milling feature)	2005 (Doug Davy, Robin McClintock, CH2M HILL)
P-34-001583 / CA-SAC-000956H	Not evaluated	Historic-era	AH03 (Landscaping)	2004 (Ric Windmiller, Consulting Archaeologist)
P-34-001869 / CA-SAC-001028H	Not evaluated	Historic-era	AH03 (Landscaping)	2007 (Ric Windmiller)
P-34-002248	Not evaluated	Historic-era	AH05 (Well/cistern); AH09 (Mines/quarries/tailings)	1998 (W.L. Norton, Jones & Stokes Associates)
P-34-002250	Not evaluated	Historic-era	AH02 (Foundations)	2002 (R. Deis, EDAW, Inc)
P-34-002252	Not evaluated	Historic-era	AH02 (Foundations)	2002 (EDAW, Inc, EDAW, Inc)
P-34-002258	Not evaluated	Historic-era	AH16 (Other)	2002 (R. Dies, EDAW, Inc)
P-34-002261	Ineligible – NRHP and CRHR	Historic-era	AH09 (Mines/quarries/tailings) – Buckeye Flat Diggings	1995 (K Syda, K. McIvers, PAR Environmental Services, Inc); 1998 (D. Coleman & S. Psota)

Primary Number/Trinomial	Eligibility Status	Age	Attribute Code(s)	Source
P-34-002263 / CA-SAC-001123H	Not evaluated	Historic-era	AH09 (Mines/quarries/tailings)	1990 (K. Syda and C. Thomas, PAR Environmental Services, Inc); 2002 (EDAW, Inc, EDAW, Inc)
P-34-002267	Ineligible - NRHP	Historic-era	AH09 (Mines/quarries/tailings)	2002 (R. Deis, EDAW, Inc)
P-34-002270 / CA-SAC-001125H	Not evaluated	Historic-era	AH09 (Mines/quarries/tailings)	2002 (R. Deis, EDAW, Inc)
P-34-002271	Not evaluated	Historic-era	AH09 (Mines/quarries/tailings)	2002 (R. Deis, EDAW, Inc)
P-34-002273	Ineligible - NRHP	Historic-era	AH09 (Mines/quarries/tailings)	2003 (PAR Environmental Services, Inc)
P-34-002285 / CA-SAC-001127H	Not evaluated	Historic-era	AH09 (Mines/quarries/tailings)	1998 (W. L. Norton, Jones and Stokes Associates)
P-34-002286	Not evaluated	Historic-era	AH09 (Mines/quarries/tailings)	1998 (W. L. Norton, Jones & Stokes Associates)
P-34-002298	Not evaluated	Historic-era	AH09 (Mines/quarries/tailings)	1980 (L. Motz, M. Rondeau, S. Dondero, CSUS, ASC)
P-34-002307	Not evaluated	Historic-era	AH09 (Mines/quarries/tailings)	2002 (Richard Deis, EDAW); 2002 (A. Peak and R. Gerry, Peak & Associates)
P-34-004507 / CA-SAC-001156H	NRHP listed, CRHR listed	Historic-era	AH02 (Foundations); AH04 (Privy pits/trash scatters/dumps); AH05 (Well/cistern); AH07 (Road/trail/railroad bed); AH09 (Mines/quarries/tailings)	2012 (M. Nolte, PAR Environmental Services)
P-34-004780 / CA-SAC-001161	NRHP listed, CRHR listed	Prehistoric-era	AH16 (Other); AP02 (Lithic scatter); AP09 (Burial)	2012 (M. Nolte, PAR Environmental Services, Inc)

Source: Compiled by Ascent in 2023.

Table 2 Previously Recorded Built Environment Resources Within the Folsom River District Master Plan Area

Primary Number/ Trinomial	Eligibility Status	Age	Attribute Code(s)	Source
P-34-000455 / CA-SAC-000428H	NRHP eligible	Historic-era	AH07 (Road/trail/railroad bed); HP18 (Train) - Sacramento Valley Railroad	1979 (Jim Arbuckle); 1991 (K. Syda, L. Shapiro, PAR Environmental Services, Inc.); 1991 (Keith Syda, Will Shapiro, PAR Environmental Services, Inc.); 1993 (Stephen D. Mikesell, JRP Historical Consulting Services); 1995 (S. Flint, M. Kelly, Dames & Moore); 1998 (Eleanor Derr, Cultural Resources Unlimited); 1998 (Robert Gerry, Peak & Associates, Inc.); 1999 (John W. Dougherty, PAR Environmental Services); 2001 (Rand Herbert, Amanda Blosser, JRP); 2002 (Amanda Blosser, Toni Webb, JRP); 2006 (Carol Roland, Roland-Nawi Associates); 2009 (Mary L. Maniery, PAR Environmental Services, Inc);
P-34-000507 / P- 34-004502 / CA- SAC-000480H	Passenger Coach - NRHP listed (district or multiple property), CRHR listed. Folsom Depot – NRHP listed, City of Folsom CRI listed. Ashland Freight Station – NRHP eligible, CRHR listed, City of Folsom CRI listed.	Historic-era	HP15 (Educational Building); HP17 (Railroad Depot) - Folsom Depot/Folsom Train Depot – 200 Wool Street; Ashland Freight Station (Ashland Depot) – 815 Leidesdorff Street	1980 (Paula Boghosian, Historic Environment Consultants); 1991 (Judith Cunningham, Par Environmental); 1991 (Judith Marvin-Cunningham, PAR Environmental Services, Inc.); 2011 (Lisbet Gullone, Nancy Percy, The Heritage Preservation League of Folsom) 2013 (Scott Johnson, AICP Planning Manager)
P-34-000835 / CA- SAC-000644H	Not evaluated	Historic-era	AH06 (Water conveyance system); HP11 (Engineering Structure) - Alder Creek Pump Plant	1995 (K. Syda, K. McIvers, PAR Environmental Services, Inc.); 1998 (Dina Coleman, Sunshine Psota)
P-34-000927 / CA- SAC-000678H	CRHR ineligible	Historic-era	HP02 (Single Family Property) – 1108 Sutter Street	2003 (Tracy Bakic, PAR Environmental Services, Inc.)
P-34-000932	NRHP potentially eligible	Historic-era	HP02 (Single Family Property) - Joe Murer House – 1121 Folsom Blvd.	1991 (Judith Marvin-Cunningham, PAR Environmental Services, Inc.)
P-34-000933	NRHP ineligible	Historic-era	HP02 (Single Family Property) – 1004 Leidesdorff Street	1991 (Judith Marvin-Cunningham, PAR Environmental Services, Inc.)
P-34-000934	NRHP ineligible	Historic-era	HP02 (Single Family Property) – 1007 Leidesdorff Street	1991 (Judith Marvin-Cunningham, PAR Environmental Services, Inc.)
P-34-000935	NRHP ineligible	Historic-era	HP02 (Single Family Property) – 294 Leidesdorff Street	1991 (Judith Marvin-Cunningham, PAR Environmental Services, Inc.)

Primary Number/ Trinomial	Eligibility Status	Age	Attribute Code(s)	Source
P-34-000942	NRHP ineligible	Historic-era	HP02 (Single Family Property) - Hall Home – 302 Leidesdorff Street	1991 (Judith Marvin-Cunningham, PAR Environmental Services, Inc.)
P-34-000945	NRHP ineligible	Historic-era	HP02 (Single Family Property) – 108 Reading Street	1991 (Judith Marvin-Cunningham, PAR Environmental Services, Inc.)
P-34-000950	NRHP ineligible	Historic-era	HP02 (Single Family Property) - Bakker Home – 101 Reading Street	1991 (Judith Marvin-Cunningham, PAR Environmental Services, Inc.)
P-34-000951	NRHP ineligible	Historic-era	HP02 (Single Family Property) – 916 River Way	1991 (Judith Marvin-Cunningham, PAR Environmental Services, Inc.)
P-34-000952	NRHP ineligible	Historic-era	HP02 (Single Family Property) - Downe Home – 901 River Way	1991 (Judith Marvin-Cunningham, PAR Environmental Services, Inc.)
P-34-000953	NRHP ineligible	Historic-era	HP02 (Single Family Property) – 907 River Way	1991 (Judith Marvin-Cunningham, PAR Environmental Services, Inc.)
P-34-000954	NRHP ineligible	Historic-era	HP02 (Single Family Property) - Hose House – 904 River Way	1991 (Judith Marvin-Cunningham, PAR Environmental Services, Inc.)
P-34-000955	NRHP ineligible	Historic-era	HP02 (Single Family Property) - Emma's Place – 902 River Way	1991 (Judith Marvin-Cunningham, PAR Environmental Services, Inc.)
P-34-000958	NRHP eligible, City of Folsom CRI listed	Historic-era	HP15 (Educational Building) - Folsom Library - 607 Sutter Street	1991 (Judith Marvin-Cunningham, PAR Environmental Services, Inc.)
P-34-000959	NRHP ineligible	Historic-era	HP02 (Single Family Property) - Donnelly Home – 608 Sutter Street	1991 (Judith Marvin-Cunningham, PAR Environmental Services, Inc.)
P-34-000960	NRHP ineligible	Historic-era	HP14 (Government Buildings) - Folsom Post Office – 627 Sutter Street	1991 (Judith Marvin-Cunningham, PAR Environmental Services, Inc.)
P-34-000961	NRHP ineligible	Historic-era	HP06 (Commercial Building, over 3 stories) - Bank of Folsom – 629 Sutter Street	1991 (Judith Marvin-Cunningham, PAR Environmental Services, Inc.)
P-34-000962	NRHP eligible, CRHR listed, City of Folsom CRI listed	Historic-era	HP39 (Other) – Joe Murer Gas Station – 701 Sutter Street	1991 (Judith Marvin-Cunningham, PAR Environmental Services, Inc.)
P-34-000963	NRHP ineligible	Historic-era	HP05 (Hotel/Motel) - New Western Hotel – 703 Sutter Street	1991 (Judith Marvin-Cunningham, PAR Environmental Services, Inc.)
P-34-000964	NRHP ineligible	Historic-era	HP06 (Commercial Building, over 3 stories) – 705 Sutter Street	1991 (Judith Marvin-Cunningham, PAR Environmental Services, Inc.)
P-34-000965	NRHP ineligible	Historic-era	HP06 (Commercial Building, over 3 stories) - Wm. Murray Building – 707 Sutter Street	1991 (Judith Marvin-Cunningham, PAR Environmental Services, Inc.)
P-34-000966	NRHP ineligible	Historic-era	HP02 (Single Family Property); HP06 (Commercial Building, over 3 stories) - House of Jade – 709 Sutter Street	1991 (Judith Marvin-Cunningham, PAR Environmental Services, Inc.)

Primary Number/ Trinomial	Eligibility Status	Age	Attribute Code(s)	Source
P-34-000967	NRHP ineligible	Historic-era	HP06 (Commercial Building, over 3 stories) - Gus Bauer's Harness Shop – 711 Sutter Street	1991 (Judith Marvin-Cunningham, PAR Environmental Services, Inc.)
P-34-000968	NRHP ineligible	Historic-era	Opera Hall – 713-715 Sutter Street	1991 (Judith Marvin-Cunningham, PAR Environmental Services, Inc.)
P-34-000969	NRHP ineligible	Historic-era	HP14 (Government Buildings) – Folsom Fire House – 710 Sutter Street	1991 (Judith Marvin-Cunningham, PAR Environmental Services, Inc.)
P-34-000970	NRHP ineligible	Historic-era	HP02 (Single Family Property) – Barry Home – 1003 Sutter Street	1991 (Judith Marvin-Cunningham, PAR Environmental Services, Inc.)
P-34-000971	NRHP ineligible	Historic-era	HP02 (Single Family Property) – Kwan Home – 1012 Sutter Street	1991 (Judith Marvin-Cunningham, PAR Environmental Services, Inc.)
P-34-000972	NRHP ineligible	Historic-era	HP02 (Single Family Property) – 1014 Sutter Street	1991 (Judith Marvin-Cunningham, PAR Environmental Services, Inc.)
P-34-000973	NRHP ineligible	Historic-era	HP02 (Single Family Property) – Lawson Home – 1016 Sutter Street	1991 (Judith Marvin-Cunningham, PAR Environmental Services, Inc.)
P-34-000974	NRHP ineligible	Historic-era	HP39 (Other) – gasoline station – 929 Sutter Street	1991 (Judith Marvin-Cunningham, PAR Environmental Services, Inc.)
P-34-000975	Not evaluated	Historic-era	HP02 (Single Family Property) – 1127 West Railroad Avenue	1991 (Judith Marvin-Cunningham, PAR Environmental Services, Inc.)
P-34-000976	Not evaluated	Historic-era	HP02 (Single Family Property) – 1125 West Railroad Avenue	1991 (Judith Marvin-Cunningham, PAR Environmental Services, Inc.)
P-34-001463 / CA-SAC-000892H	NRHP ineligible	Historic-era	HP11 (Engineering Structure); HP20 (Canal/Aqueduct)	2005 (Robin McClintock, Doug Davy, CH2M HILL, Inc.)
P-34-002255	Not evaluated	Historic-era	AH03 (Landscaping); HP20 (Canal/Aqueduct); HP30 (Trees/Vegetation)	2002 (R. Deis, EDAW, Inc); 2020 (Steven J. "Mel" Melvin, JRP Historical Consulting, LLC)
P-34-002256	Not evaluated	Historic-era	HP36 (Ethnic Minority Property); HP39 (Other)	2002 (R. Dies, EDAW, Inc)
P-34-002276 / CA-SAC-308H	NRHP listed, HRI eligible, City of Folsom CRI listed.	Historic-era	AH09 (Mines/quarries/tailings); HP36 (Ethnic Minority Property) – Natoma Ground Sluice Diggings	1988 (S.G. Lindstrom, P. Sutton, J. Wells, N. Wilson); 1989 (Betsy Strand, Chinese Historical Society of America); 1990 (OHP, OHP); 1990 (Tim Strong, County Board of Supervisors); 1990 (K. Syda and C. Thomas); 1998 (D. Coleman, S. Psota, Anthropological Studies Center, Sonoma State University); 2002 (Richard Deis, EDAW); 2004 (Ric Windmiller)
P-34-002331	City of Folsom CRI listed	Historic-era	HP36 (Ethnic Minority Property); HP40 (Cemetery) – Chung Wah Cemetery	1980 (Dr Nancy Wey, Chinese Smerican Survey); 1995 (Mary L. Manieri, Cindy Baker, PAR Environmental Services, Inc. - City of Folsom)

Primary Number/ Trinomial	Eligibility Status	Age	Attribute Code(s)	Source
P-34-002339	NRHP listed, SHL, CRHR listed, City of Folsom CRI listed	Historic-era	HP09 (Public Utility Building) – Folsom Powerhouse – Folsom Blvd.	1970 (Allen W. Welts, Dept of Parks and Rec); 1978 (Geroge R. Adams, American Association for State and Local History); 1979 (Peter A. Cimarelli); 1979 (Jim Arbuckle)
P-34-002434	NRHP eligible, City of Folsom CRI listed, CA Bridge Inventory	Historic-era	HP19 (Bridge) – Rainbow Bridge (#24C-67) – Greenback Lane	1986 (Hans Kreutzberg); 2003 (TW/CT, JRP Historical Consulting)
P-34-003895	SHL, City of Folsom CRI listed	Historic-era	HP01 (Unknown) – Folsom Overland Pony Express Route	1979 (Peter A Cimarelli)
P-34-004491	NRHP eligible	Historic-era	HP18 (Train) – Southern Pacific C-40-3 Caboose	2012 (PAR Environmental Services, Inc, PAR Environmental Services, Inc)
P-34-005119	Not evaluated	Historic-era	Folsom State Prison Railroad	2011 (Richard Allen Appleby)
P-34-005120	Not evaluated	Historic-era	HP18 (Train)	1991 (Keith Syda, Will Shapiro, PAR Environmental Services); 1992 (S. Lindstrom, L. Lundemo, M. Panelli, J. Wells, N. Wilson, Consulting Archaeologists, Truckee, CA); 2008 (J. Coleman, Solano Archaeological Services); 2012 (S. Pappas, D. Quivey, Ecorp Consulting, Inc); 2015 (Katie Vallaire and Thea Fuerstenberg)
---	City of Folsom CRI listed	Historic-era	Old Folsom Historic District	City of Folsom CRI
---	SHL, City of Folsom CRI listed	Historic-era	Terminal of California's First Passenger Railroad	City of Folsom CRI
CA-SAC-017	City of Folsom CRI listed	Historic-era	Negro Bar	City of Folsom CRI
---	CRHR eligible, City of Folsom CRI listed	Historic-era	Young Wo Cemetery	City of Folsom CRI
---	CRHR eligible, City of Folsom CRI listed	Historic-era	Odd Fellows and Mason Cemeteries	City of Folsom CRI
---	NRHP eligible, CRHR listed, City of Folsom CRI listed	Historic-era	Eucalyptus and Olive Grove – 13417 Folsom Blvd.	City of Folsom CRI
---	NRHP eligible, City of Folsom CRI listed	Historic-era	Murer House – 1121 Folsom Blvd.	City of Folsom CRI
---	NRHP eligible (district)	Historic-era	Barn-Broder Ranch Complex	BERD

Primary Number/ Trinomial	Eligibility Status	Age	Attribute Code(s)	Source
	contributor), CRHR listed			
---	NRHP eligible (district contributor), CRHR listed	Historic-era	Winery-Granary-Broder Ranch Complex	BERD
---	NRHP eligible (district contributor), CRHR listed	Historic-era	Main Residence-Broder Ranch Complex	BERD
---	NRHP eligible (district contributor), CRHR listed	Historic-era	Collapsed building and foundation-Broder Ranch Complex	BERD
---	NRHP eligible, CRHR listed	Historic-era	Jacob Broder Ranch	BERD
---	NRHP eligible, CRHR listed	Historic-era	Folsom Dam and Powerplant – 7794 Folsom Dam Road	BERD
---	NRHP eligible (district contributor), CRHR listed	Historic-era	Folsom Dam Power Substation – 7794 Folsom Dam Road	BERD
---	NRHP listed, CRHR listed	Historic-era	Railroad Section Gang Foreman’s Residence – 815 Oakdale Street	BERD
---	City of Folsom CRI listed	Historic-era	Sutter Street Historic Commercial District – 600-900 blocks of Sutter Street	City of Folsom CRI
---	City of Folsom CRI listed	Historic-era	Rodeo Arena site – Stafford Street at Johnny Cash Trail	City of Folsom CRI
---	City of Folsom CRI listed	Historic-era	Granite pillars from the State Capitol – 411 Stafford Street	City of Folsom CRI
---	City of Folsom CRI listed	Historic-era	707, 709, 711, and 713 Sutter Street – commercial buildings	City of Folsom CRI
---	City of Folsom CRI listed	Historic-era	917, 921, and 923 Sutter Street – commercial buildings	City of Folsom CRI
---	City of Folsom CRI listed	Historic-era	Figuroa Street Bridge	City of Folsom CRI
---	City of Folsom CRI listed	Historic-era	Guiseppe Murer House – 1125 Joe Murrer Court	City of Folsom CRI
---	City of Folsom CRI listed	Historic-era	Odd Fellows and Mason’s Cemeteries – 1201 Forrest Street	City of Folsom CRI

Notes: NRHP – National Register of Historic Places; CRHR – California Register of Historical Resources; BERD – Built Environment Resources Directory; CRI – Cultural Resources Inventory; **BOLD** – these resources have been listed on either the national, State or local register.

The search revealed 150 cultural resources studies within the plan area and the 0.25-mile radius (Table 3). The cultural resources studies cover approximately 80 percent of the plan area.

Table 3 Previous Cultural Resources Studies Within the Plan Area and the 0.25 Mile Buffer

Report Number	Year	Author/Affiliation	Title	Within Plan Area?
NCIC-000101	1979	Ann S. Peak and Associates	<i>Cultural Resource Assessment of the Hearthstone Condominium Development, Sacramento County, California.</i>	No
NCIC-000107	1978	Lee Motz/ The Archeological Study Center, CSU Sacramento	<i>An Archeological Reconnaissance of the American River Bluffs Subdivision, Sacramento County, California.</i>	No
NCIC-000127	1972	Jerald J. Johnson/ Sacramento State College, Department of Anthropology	<i>Present Status of Archeological Resources in Sacramento County. Overview</i>	Yes
NCIC-000155	1977	Gregory Greenway/ Archeology Study Center, CSU Sacramento	<i>An Archeological Survey of the Oak Avenue Parkway, Ashland Water Transmission Main and Storage, Blue Ravine Water Transmission Main, and the Lew Howard Memorial Park for the City of Folsom, Sacramento County, California.</i>	Yes
NCIC-000211	1978	Ann S. Peak and Associates	<i>Cultural Resource Assessment of the Ess Project, Sacramento County, CA</i>	Yes
NCIC-000234	1978	Wayne C. Wiant	<i>The Archeological Monitoring of the Ashland Transmission Main From Rainbow Bridge to the Intersection of Coloma and Natoma Streets.</i>	Yes
NCIC-000252	1979	Ann S. Peak and Associates	<i>Cultural Resource Assessment of the Proposed Natomas Development, Sacramento County, CA.</i>	Yes
NCIC-000398	1979	Ann S. Peak and Associates	<i>Cultural Resource Assessment of Sacramento Municipal Utility District's Project E, Phase I, 230kV Transmission Line Project, Folsom Dam to the Orangevale Tap, Placer County, California.</i>	No
NCIC-000571	1980	Lee Motz/ The Archeological Study Center, CSU Sacramento	<i>A Cultural Resource Assessment of the Current and Proposed Right-of-Way of the Nimbus/Folsom Transmission Line.</i>	Yes
NCIC-000786	1998	Melinda A. Peak/ Peak & Associates, Inc.	<i>Historic Properties Survey Report and Finding of No Adverse Effect for the Proposed Folsom Boulevard Project between Blue Ravine Road and Natoma Street, City of Folsom, California.</i>	Yes
NCIC-001836	1995	Jones and Stokes	<i>Cultural Resources Investigation Survey Report of the Clock Tower Storage Project.</i>	Yes
NCIC-001843	1982	Janis Offermann	<i>A Cultural Resources Survey at Folsom State Prison</i>	No
NCIC-001844	1991	Neal Neuenschwander/ Peak & Associates, Inc.	<i>Cultural Resources Assessment of the Silverbrook Specific Plan Area, Folsom, California</i>	No
NCIC-001845	1990	Neal Neuenschwander/ Peak & Associates, Inc.	<i>Cultural Resources Assessment of the Casa Natoma Project, City of Folsom, California.</i>	Yes
NCIC-001847	1992	Norman L. Wilson	<i>Cultural Resource Evaluation Of The Lake Natoma Shores Project Folsom, Sacramento Co. Calif</i>	Yes
NCIC-002557	2000	Mary Maniery	<i>Finding of No Historic Properties Affected for the Proposed Folsom Widening Project, Sacramento County, California</i>	Yes
NCIC-002594	2000	Mary Maniery and Tracy D. Bakic/ PAR Environmental Services, Inc.	<i>Historic Property Survey Report Folsom Boulevard Widening Project, Sacramento County, California.</i>	Yes

Report Number	Year	Author/Affiliation	Title	Within Plan Area?
NCIC-002594B	2000	John Dougherty and Mary L. Manieri/ PAR Environmental Services, Inc.	<i>Archaeological Survey Report/Historic Study Report, Folsom Boulevard Widening Project, Sacramento County, California</i>	Yes
NCIC-002594C	2000	Tracy D. Bakic and Mary L. Manieri/ PAR Environmental Services, Inc.	<i>Historic Architectural Survey Report, Folsom Boulevard Widening Project, Sacramento County, California.</i>	Yes
NCIC-002684	1995	Mary Manieri/ PAR Environmental Services, Inc.	<i>Historic Property Survey Report for the Proposed U.S. Route 50/ Folsom Blvd. Interchange Improvements, City of Folsom, Sacramento County, California; Archaeological Survey Report/Historic Study Report for the proposed United States Rout50/Folsom Blvd.</i>	Yes
NCIC-002761	1999	Sharon Waechter/ JRP Historical Consulting Services; Far Western Anthropological Research Group, Inc.	<i>Historic Properties Survey Report Downtown Sacramento Amtrak and Folsom Corridor Light Rail Transit Extensions and Double Tracking Project</i>	Yes
NCIC-002761A	1999	JRP Historical Consulting and Far Western Anthropological Research Group	<i>Historic Architectural and Archaeological Survey Report for the Downtown Sacramento Amtrak and Folsom Corridor Light Rail Transit Extensions and Double Tracking</i>	Yes
NCIC-003036	1995	Mary L. Manieri, Keith Syda, and Kristin Boice/ PAR Environmental Services, Inc.	<i>Cultural Resources Investigations of the Bradshaw, Sunrise, and Folsom East Interceptors Project Sacramento County, California</i>	No
NCIC-003704	1996	Earth Tech	<i>Cultural Resource Assessment for Air Force Plant 70</i>	No
NCIC-003717	1980	Dorene Askin/ The Great Valley History Company	<i>Folsom's Chinese Cemeteries The Young Wah Co. Site</i>	Yes
NCIC-003719	2001	Lorna Billat/ EarthTouch, LLC	<i>CA-0239B/Natoma Station, 12724 Folsom Boulevard, Rancho Cordova/ Sacramento</i>	No
NCIC-003723	1988	Susan Lindstrom/ Archaeological Consultant	<i>Natoma Station Development</i>	Yes
NCIC-003750	1992	Ben Phillips	<i>Western Area Power Administration Sacramento Area operations Center: Lake Forest and Tributary Point Sites</i>	No
NCIC-003752	1989	Susan Lindstrom	<i>Natoma Station Project</i>	Yes
NCIC-003754	1994	Mary L. Manieri, Leslie R. Fryman, and Grace H./ PAR Environmental Services, Inc.	<i>Historical Overview of Negro Bar: an Early mining Community on the American River</i>	Yes
NCIC-003757	1996	PAR Environmental Services, Inc.	<i>Historic Property Treatment Plan for CA-SAC426-H Folsom's Chinese Community</i>	Yes
NCIC-003759	1995	Mary L. Manieri and Jody L. Brown/ PAR Environmental Services, Inc.	<i>Historical Overview and Archaeological Research Design for the Historical Depot Grounds, Blocks 20 and 21, Folsom, California</i>	Yes
NCIC-003760	1984	John W. Foster and Daniel G. Foster/ Foothill Archaeological Services	<i>A Preliminary Cultural Resources Assessment of the Alder Creek Business Park, Sacramento County, California</i>	Yes
NCIC-003761	2001	Loma Beth Billat/ EarthTouch, LLC	<i>Nextel Communications (on-air) CA-0205A / West Folsom Entrance Road to Folsom State Prison</i>	No

Report Number	Year	Author/Affiliation	Title	Within Plan Area?
NCIC-003778	1999	PAR Environmental Services, Inc.	<i>American River Bridge Project: Lake Natoma</i>	Yes
NCIC-003803	1998	Jones & Stokes	<i>Archaeological Survey Report for the Folsom East Interceptor Section 2 Extension Project, Sacramento County Control Number: 97-DWE-0395</i>	Yes
NCIC-003828	1991	Steve Hiepel/ PAR Environmental Services, Inc	<i>Archaeological Survey Report for the Proposed Hazel Avenue and State Route 50 Interchange Improvement Project (03-SAC50-15.6/15.9) Sacramento County, California</i>	No
NCIC-003828A	1992	Stede Craigo and James Conwell / OHP; Bureau of Reclamation	<i>Hazel Avenue/SR 50 Interchange Improvement Project Sacramento County (BUR920110A)</i>	No
NCIC-003835	1999	Ric Windmiller and Jane Russell/ Consulting Archaeologist	<i>Historic Ditch Segment Oak Brook Apartments Development</i>	No
NCIC-003838	2000	Dan Osanna and Ric Windmiller	<i>Phase 1 Cultural Resources Inventory Willow Creek Plaza</i>	Yes
NCIC-003840	1994	Judy Tordoff/ Caltrans	<i>Proposed Interchange and Auxiliary Lanes Highway 50</i>	No
NCIC-003864	1998	Dina Coleman and Sunshine Psota/ Anthropological Studies Center, Sonoma State University	<i>Proposed South Lake Natoma Trail of the Alder Creek Pedestrian/Bicyclist Bridge Crossing Project</i>	No
NCIC-003864B	1999	Daniel Abeyta and Frank Michny/ OHP; Bureau of Reclamation	<i>South Lake Natoma Bicycle Trail, Sacramento County, California</i>	No
NCIC-003935	1997	Mary Manier and Cindy Baker/ PAR Environmental Services, Inc	<i>Determination of Eligibility for Folsom's Historic Turntable Historic Depot Grounds Blocks 20 & 21, Folsom, Sacramento County, California</i>	Yes
NCIC-003935B	1995	Mary Manier and Cindy Baker/ PAR Environmental Services, Inc	<i>Folsom's Historic Turntable Folsom, Sacramento County, California Final Report</i>	Yes
NCIC-004505	---	Margaret Keefer/ County of Sacramento, Department of Environmental Review	<i>Cultural Resource Survey Report for the Proposed California Temple USE Permit</i>	No
NCIC-004507	2003	C. Baker, J. Dougherty, and T. Bakic/ PAR Environmental Services, Inc.	<i>Cultural Resources Investigation of the 1108 Sutter Street Property Folsom, Sacramento County, California</i>	Yes
NCIC-004508	1993	Mary L. Manier / PAR Environmental Services, Inc	<i>Determination of Effect American River Bridge Crossing Project, City of Folsom, Sacramento County, California</i>	Yes
NCIC-004508A	1993	Stede Craigo/ OHP	<i>Project: American River Bridge Crossing, BUR910920A Concurrence Letter</i>	Yes
NCIC-004509	1991	Mary L. Manier and Keith Syda/ PAR Environmental Services, Inc.	<i>Cultural Resources investigation for the American River Bridge Crossing Project, City of Folsom, Sacramento County, California</i>	Yes
NCIC-004509B	1991	Mary L. Manier and Keith Syda	<i>American River Bridge Crossing Project, City of Folsom, Sacramento County, California</i>	Yes

Report Number	Year	Author/Affiliation	Title	Within Plan Area?
NCIC-004509C	1993	Mary L. Maniery, Steve Heipel, Jody Brown, Leslie Fryman, and Keith Syda / PAR Environmental Services, Inc.	<i>Phase II Investigations for The American River Bridge Crossing Project, City Of Folsom, Sacramento County, California</i>	Yes
NCIC-004509D	1993	Steadie Craigo/ OHP	<i>Project: American River Bridge Crossing, BUR910920A Concurrence Letter</i>	Yes
NCIC-004519	1989	Susan Lindstrom and John Wells	<i>A Cultural Resource Evaluation of Aerojet General Corporation, Sacramento Plant, Sacramento County</i>	No
NCIC-004520	1992	Mary Maniery/ PAR Environmental Services, Inc	<i>Historic Survey Report and Historic Resource Evaluation Report for Sixteen Sites, Highway 50 Interchange Project Post Mile 18.8 TO 23.1, Sacramento County, California</i>	Yes
NCIC-004520A	1993	Mary L. Maniery/ PAR Environmental Services, Inc	<i>Research Design to Conduct Phase II Investigations at PAR 6, Highway 50 and Oak Avenue Interchange Project, Sacramento County, California</i>	Yes
NCIC-004521	1994	Daryl G. Novle/ State of California, Department of Transportation District 3	<i>Historic Property Survey Report for a Proposed Interchange and Auxillary Lanes on Highway 50 in Eastern Sacramento County, California 03-SAC-50 P.M. 17.1/20.1 03101-394500</i>	No
NCIC-004525	1991	Mary Maniery/ PAR Environmental Services, Inc	<i>Archaeological Survey Report for the Highway 50 Interchange Project, Post Mile 15.8 to Post Mile 23.1, Sacramento County, California</i>	Yes
NCIC-006620	2005	James Gary Maniery/ PAR Environmental Services, Inc	<i>Burial Recovery at CA-SAC-166 the Natoma Site</i>	Yes
NCIC-006621	1962	Charles L. Gebhardt/ American River Jr College	<i>Archaeological Salvage Excavations of Sac 166 Near Natoma, California</i>	Yes
NCIC-006675	2003	Jessica B. Feldman/ Myra L. Frank & Associates, Inc.	<i>Caltrans Historic Bridges Inventory Update</i>	Yes
NCIC-006675A	2004	Christopher McMorris/ JRP Historical Consulting	<i>Caltrans Historic Bridge Inventory Update: Timber Truss, Concrete Truss, and Suspension Bridges</i>	Yes
NCIC-006675B	2004	JRP Historical Consulting (McMorris); Caltrans (Hope)	<i>Caltrans Historic Bridge Inventory Update: Metal Truss, Movable, and Steel Arch Bridges</i>	Yes
NCIC-006675C	2004	Christopher McMorris/ JRP Historical Consulting	<i>Caltrans Historic Bridge Inventory Update: Concrete Arch Bridges</i>	Yes
NCIC-006675D	2004	Andrew Hope/ Caltrans	<i>Caltrans Statewide Historic Bridge Inventory Update Survey and Evaluation of Common Bridge Types</i>	Yes
NCIC-006738	2003	EDAW, Inc.	<i>Cultural Resources Inventory and Site Assessment for the: Lake Natoma State Recreation Area, Sacramento County, CA</i>	Yes
NCIC-006933	2005	Mary L. Maniery and Baker, Cindy/ PAR Environmental Services, Inc.	<i>Cultural Resources Investigation for the Folsom Sanitary Sewer Rehabilitation Project- Phase 1 Folsom, CA</i>	No
NCIC-006957	2002	Ric Windmiller and Donald Napoli	<i>Historic Property/ Historic Architectural/ Archaeological Survey Report and Finding of No Effect Folsom Auburn Road Widening Project Sacramento & Placer Counties</i>	No

Report Number	Year	Author/Affiliation	Title	Within Plan Area?
NCIC-006957B	2002	Michael Ritchie and Dr. Knox Mellon/ US Department of Transportation; OHP	<i>Historic Property Survey Report/No Historic Properties Affected-Folsom Auburn Road Widening</i>	No
NCIC-006967	2004	Daniel Bell/ Environmental Analysis Section	<i>Area of Potential Effects and Archaeological Survey, Geotechnical Explorations, Folsom Dam Bridge Project, Sacramento County, CA</i>	Yes
NCIC-007009	2006	Douglas M. Davy and Robin McClintock/ CH2MHILL	<i>Cultural Resources Inventory for the Folsom Dam Bridge</i>	Yes
NCIC-007043	2005	PAR	<i>Archaeological Survey of the Folsom Auto Mall Expansion</i>	No
NCIC-007056	2006	John W. Dougherty and Cindy L. Baker/ PAR Environmental Services, Inc.	<i>Cultural Resources Inventory Hinkle Creek Center City of Folsom Sacramento County, CA</i>	No
NCIC-007130	2002	Brian Hatoff and R. Egherman/ URS	<i>Roseville Energy Facility Cultural Resources</i>	No
NCIC-007898	2004	Ric Windmiller/ Consulting Archaeologist	<i>Archaeological Resources Inventory for 900 Block Sutter Street, Folsom, Sacramento County, CA</i>	Yes
NCIC-007899	2004	Ric Windmiller/ Consulting Archaeologist	<i>Larkspur Hotel Project Natoma Station Lot Y</i>	Yes
NCIC-007925	2004	Susan Huster/ LSA Associates Inc.	<i>Historic Property Survey Report for the Orangevale Avenue Bridge Replacement Project CalTrans District 3</i>	No
NCIC-007925A	2004	Susan Huster/ LSA Associates Inc.	<i>Archaeological Survey Report for the Orangevale Avenue Bridge Replacement Project</i>	No
NCIC-007925B	2004	Judith Marvin/ LSA Associates Inc.	<i>Historical Resources Evaluation Report for the Orangevale Bridge Replacement Project</i>	No
NCIC-008811	2007	Nancy E. Sikes/ SWCA Environmental Consultants	<i>Cultural Resources Inventory and Evaluation for the Proposed Dos Coyotes Trail Segment Project, City of Folsom Parks and Recreation Department, Sacramento County, California</i>	Yes
NCIC-008821	2007	Roger D. Mason/ ECORP Consulting, Inc.	<i>Cultural Resource Inventory, Glenborough at Easton, Sacramento County, California, Project 2003-019</i>	No
NCIC-008821B	2008	ECORP Consulting, Inc.	<i>Supplemental Cultural Resources Inventory and Evaluation Report of Infrastructure Improvements at Glenborough at Easton, Sacramento County, California</i>	No
NCIC-008821C	2007	ECORP Consulting, Inc.	<i>Cultural Resources Testing and Evaluation of Archaeological Resources at Glenborough at Easton and Easton Place, City of Rancho Cordova, Sacramento County, California</i>	No
NCIC-008821D	2007	ECORP Consulting, Inc.	<i>Cultural Resources Inventory Glenborough at Easton, Sacramento County, California</i>	No
NCIC-008821E	2007	ECORP Consulting, Inc. and Past Forward, Inc	<i>Evaluation of Structures Associated with the Aerojet Complex, Glenborough at Easton, Sacramento County, California</i>	No
NCIC-008821F	2007	ECORP Consulting, Inc.	<i>Cultural Resources Inventory Glenborough at Easton, Sacramento County, California</i>	No
NCIC-008933	2007	Ric Windmiller/ Consulting Archaeologist	<i>925 Sutter Street, Archaeological Resources Inventory and Evaluation, Folsom, Sacramento County, California</i>	Yes

Report Number	Year	Author/Affiliation	Title	Within Plan Area?
NCIC-008994	2007	Roger D. Mason/ ECORP	<i>Cultural Resources Survey Report, 69kV Alignment, Sacramento County, California, Project 2003-019</i>	No
NCIC-009039	1980	Dorene Askin, Robert Docken, and Charles A. Litzinger/ Historical Consultant	<i>The Natoma Station Ground Sluices: An Historical Study</i>	No
NCIC-009044	2007	Marcos Guerrero/ ECORP Consulting	<i>Cultural Resources Survey Report Panattoni Business Park</i>	No
NCIC-009050	2004	Mary L. Manieri, Jody L. Brown, and Lynn Compas/ PAR Environmental	<i>Historical Overview and Archaeological Research Design for the Historical Depot Grounds, Blocks 20 and 21, Folsom, California</i>	Yes
NCIC-009142	2007	Scott Billat/ EarthTouch Inc.	<i>Sutter Middle School cell antenna</i>	No
NCIC-009183	2000	Dana McGowan/ Jones & Stokes	<i>Cultural Resources Investigation for the Nextlink Fiber Optic Project, Sacramento and Placer Counties</i>	Yes
NCIC-009188	2002	Wendy J. Nelson and Kimberley Carpenter/ Far Western Anthropological Group	<i>Cultural Resources Survey for Right-of-Way Maintenance Along the Western Area Power Administration Transmission Lines Volumes I, II, and III</i>	Yes
NCIC-009188A	2002	Rand F. Herbert and Amanda Blosser/ JRP Historical Consulting Services	<i>Cultural Resources Survey for Right of Way Maintenance Along the Western Area Power Administration Transmission Lines in Sacramento, Placer, and Sutter Counties, California, Volume III: Historic Properties Report</i>	Yes
NCIC-009258	2008	Peak & Associates, Inc.	<i>Determination of Eligibility and Effect for the Parshore Phases III and V Project Area. City of Folsom, California</i>	Yes
NCIC-009589	2008	Nancy E. Sikes, Cindy J. Arrington, Christopher Corey, and Phillip G. Hanes/ SWCA Environmental Consultants	<i>Cultural Resources Inventory and Evaluation for the Proposed Dos Coyotes Trail Segment Project, City of Folsom Parks and Recreation Department, Sacramento County, California</i>	Yes
NCIC-009952	2008	Susan Fry/ Bureau of Reclamation	<i>National Historic Preservation Act, Section 106 Consultation for the Aerojet Lake Natoma Monitoring Well, Folsom State Recreational Area, Sacramento County, California (Project No. 08-CCAO-2550)</i>	Yes
NCIC-009986	2008	Kari Jones/ Pacific Legacy Inc	<i>Archaeological Study for the San Juan Water District 84-inch Raw Water Pipeline, Alternatives 1 and 2, Folsom, Sacramento County, California</i>	No
NCIC-010034	1995	Cindy Baker and Mary L. Manieri/ PAR Environmental Services, Inc	<i>Historical Overview of Yeong Wo Cemetery and Folsom's Chinese Community, Folsom, Sacramento County, California</i>	Yes
NCIC-010037	1988	Susan Lindstrom, John Wells, and Norm Wilson	<i>A Comparative Evaluation of the Natoma Ground Sluice Diggings Folsom, California</i>	No
NCIC-010038	1980	Dorene Askin, Robert Docken, and Charles A. Litzinger/ The Natomas Company	<i>The Natoma Station Ground Sluices: An Historical Study</i>	No
NCIC-010350	2005	Mary Manieri/ PAR Environmental	<i>Finding of No Adverse Effect for the Folsom Railroad Block Plaza Improvement Project City of Folsom, Sacramento County, California</i>	Yes
NCIC-010373	2008	Richard V. Olson/ District 3 CalTrans	<i>US 50/Folsom Blvd. On-Ramp Widening/Historic Property Survey Report</i>	Yes

Report Number	Year	Author/Affiliation	Title	Within Plan Area?
NCIC-010400	2009	Nancy Sikes and Cindy Arrington/ GeoEngineers, Inc	<i>Cultural Resources Survey Folsom Boulevard Transit Oriented Development Plan Sacramento County, California</i>	Yes
NCIC-010811	2011	Nancy Sikes and Cindy Arrington/ PARUS Consulting, Inc	<i>Cultural Resources Inventory and Evaluation For The Proposed Lake Natoma Waterfront And Trail Access Enhancement Project City of Folsom Parks and Recreation Department Sacramento County, California Reclamation Project Tracking No. 11-CCAO-071</i>	Yes
NCIC-011007	2012	Cindy Baker/ PAR Environmental, Inc	<i>National Register of Historic Places Evaluation, Folsom Depot Rolling Stock, Folsom, Sacramento County, California</i>	Yes
NCIC-011111	2010	Ric Windmiller/ Consulting Archaeologist	<i>Historic Folsom Railroad Depot The Railroad Shops Area: An Archaeologist's Notebook</i>	Yes
NCIC-011288	2013	PAR Environmental Services, Inc	<i>Supplemental Historic Property Survey Report for the Johnny Cash Class 1 Bicycle Trail, City of Folsom, California Federal Project No. 5288 (025)</i>	No
NCIC-011324	2011	Lisa Westwood and Roger Mason/ ECORP Consulting, Inc.	<i>Historic Property Treatment Plan for Alder Creek Corridor Mining District (CA-SAC-1008-H), Sacramento County, California</i>	No
NCIC-011324B	2013	Katherine Knapp, Lisa Westwood, Stephen Pappas, and David Quivey/ ECORP Consulting, Inc.	<i>Data Recovery Results For Feature 4A of CASAC-1008-H (Alder Creek Corridor Mining District) In The Glenborough At Easton And Easton Place Project</i>	No
NCIC-011324C	2016	Lisa Westwood/ ECORP Consulting, Inc.	<i>Historic Property Treatment Plan for Alder Creek Corridor Mining District (CA-SAC-1008-H), Sacramento County, California</i>	No
NCIC-011573	2014	Ric Windmiller, Dana E. Supernowicz, and Kenneth L. Finger/ Ric Windmiller Consulting Archaeologist	<i>Cultural Resources Assessment Manhole Access Roads Improvement Project, Folsom, Sacramento County, California</i>	No
NCIC-011755	2015	Josh Allen/ PAR Environmental Services, Inc.	<i>Cultural Resources Survey of Folsom Zoo, Sacramento County, California.</i>	Yes
NCIC-011807	2014	Joe Griffin and Stefanie Adams/ US Army Corps of Engineers	<i>Cultural Resources Assessment for Proposed Slope Protection Measures Along 400 feet of the Right Bank of the American River Downstream of Folsom Dam for Phase V of the Folsom Joint Federal Project, Sacramento County, California</i>	No
NCIC-011987	2015	James D. Collis/ U.S. Bureau of Reclamation	<i>A Class III Cultural Inventory Report for the American River Water Education Center Sign, Turbine Runner, and Flagpole Installation</i>	No
NCIC-012048	2014	Jim Michaels/ CA State Parks	<i>National Historic Preservation Act (NHPA) Section 106 Compliance for a Telecommunication Line Installation Project at the California Department of Parks and Recreation, Gold Field District (State Parks) Corporation Yard, Sacramento County, California (Project #14-CCAO-246)</i>	No
NCIC-012086	2015	Kevin (Lex) Palmer/ Division of Environmental Affairs	<i>Folsom Dam Auxiliary Pumping System Finding of Effect, Sacramento County, California, Bureau of Reclamation Mid-Pacific Region (Project Tracking No. 15-CCAO-269)</i>	No
NCIC-012457	2009	Sannie Osborn and	<i>Archeology Survey of Approximately 60 acres for Proposed Rossmoor Mitigation Site for the American River, Folsom Bridge Project, in the American River Parkway, Sacramento County</i>	No

Report Number	Year	Author/Affiliation	Title	Within Plan Area?
		Richard Perry/ U.S. Army Corps of Engineers, Sacramento District		
NCIC-012457B	2015	Stefanie Adams/ U.S. Army Corps of Engineers, Sacramento District	<i>Cultural Resources Assessment for the Proposed Site Restoration along 400 feet of the Right Bank of the American River Downstream of Folsom Dam for Phase V of the Folsom Joint Federal Project, Sacramento County, California</i>	No
NCIC-012457C	2016	Stefanie Adams/ U.S. Army Corps of Engineers, Sacramento District	<i>Cultural Resources Assessment for the Proposed Site Restoration and Mitigation for Phase V of the Folsom Dam Modification Project, Sacramento County, California</i>	No
NCIC-012589	2017	Sean Michael Jensen/ Genesis Society	<i>Archaeological Inventory Survey Folsom RV and Boat Storage Development Project circa 7.18-acres City of Folsom, Sacramento County, California</i>	No
NCIC-012619	2017	Lex Palmer/ Bureau of Reclamation, Division of Environmental Affairs	<i>Folsom Dam Safety and Flood Damage Reduction Project</i>	No
NCIC-012723	2016	Dionne Gruver/ California Department of Parks and Recreation	<i>Cultural Resource Inventory for the Folsom Lake State Recreation Area Sewer Lift Station Replacement Project, Beal's Point and Negro Bar, Placer and Sacramento County, California</i>	Yes
NCIC-012944	2017	U.S. Army Corps of Engineers	<i>Folsom Dam and Reservoir Project, American River in El Dorado, Placer, and Sacramento Counties, California. Cultural Resources Inventory, Evaluation and Determination of Effects for Folsom Dam Raise Project Construction, including Haul Routes, Recreation Trails, Staging Areas and Proposed Geotechnical Explorations; Section 106 Consultation for the Issuance of a Right-of-Entry (ROE) Permit to U.S. Army Corps of Engineers (USACE) for the Folsom Dam Raise Project (FDRP), El Dorado and Placer Counties, California (Project #15-CCAO056.004)</i>	No
NCIC-013097	2020	Laurel Zickler-Martin and Lisa Westwood/ ECORP Consulting, Inc.	<i>Cultural Resources Inventory Report for the Lakeside Memorial Lawn Storage Shed Project</i>	Yes
NCIC-013115	2021	Steven J. "Mel" Melvin and Bryan Larson/ JRP Historical Consulting LLC	<i>National Register of Historic Places and California Register of Historical Resources Eligibility Evaluation for the Natomas Consolidated Eucalyptus Grove and Olive Orchard in the Folsom State Lake State Recreation Area, Folsom, California</i>	Yes
NCIC-013115B	2006	Community Development Department, City of Folsom	<i>The Nomination of a 30-acre Eucalyptus and Olive Grove at 13417 Folsom Blvd. to the Cultural Resource Inventory List</i>	Yes
NCIC-013181	2017	Dionne Gruver/ California Department of Parks and Recreation, Northern Service Center	<i>Cultural Resource Inventory for the Negro Bar Day-use Improvements Project, Folsom Lake State Recreation Area, Sacramento County, California</i>	Yes
NCIC-013211	2017	Mariko Falke and Katie Vallaire/ LSA Associates, Inc.	<i>Cultural Resources Study, 510 Sutter Street and 605 Sutter Street Properties, City of Folsom, Sacramento County, California</i>	Yes
NCIC-013360	2018	Stefanie Adams/ US Army Corps of Engineers	<i>Cultural Resources Assessment for the Installation of Survey Monuments Near Dikes 1 Through 6 for the Folsom Dam Raise Project, Sacramento County, CA</i>	No

Report Number	Year	Author/Affiliation	Title	Within Plan Area?
NCIC-013362	2017	Julianne Polanco and Cherie Johnston-Waldear/ OHP; Department of Energy, Western Area Power Administration	<i>Section 106 Consultation for the Security Upgrades at the Folsom Substation and the New Melones Substation (WAPA20170306001)</i>	No
NCIC-013362A	2008	Stephen Tuggle, Mary Barger, Milford Wayne Donaldson, and Susan Stratton/ OHP; Western Area Power Administration (WAPA)	<i>Proposed Interconnection of Sacramento Municipal Utility District (SMUD) Existing Orangevale-Lake 230 Kilovolt Transmission Line Circuit into the Western Area Power Administration (WAPA) Existing Folsom Substation, Sacramento County, CA (WAPA080702A)</i>	No
NCIC-013383	2015	Carrie Wills/ HELIX Environmental Planning, Inc.	<i>Oak Parkway Trail Undercrossing, Draft Initial Study & Environmental Evaluation</i>	No
NCIC-013549	2019	Jeremy Foin and Lex Palmer/ Division of Environmental Affairs, Bureau of Reclamation	<i>Folsom Lake State Recreation Area Jediah Smith Memorial Trail and Pioneer Express Trail Modification Projects</i>	No
NCIC-013550	2020	Anastasia Leigh/ United States Department of the Interior, Bureau of Reclamation	<i>National Historic Preservation Act, Section 106 Consultation for the Folsom Powerhouse State Historic Park (SHP) Footpath Interpretive Signs Upgrade Project, Sacramento County, CA (20-CCAO-071)</i>	Yes
NCIC-013766	2015	Alicia Kirchner/ US Army Corps of Engineers	<i>Section 106 Compliance for the Folsom Dam Raise Flood Risk Management (Dam Raise FRM) Project</i>	No
NCIC-013820	2019	Chandra Miller and Jennifer Redmond/ AECOM	<i>National Historic Preservation Act Section 106 Historic Properties Technical Memorandum for the Folsom Light Rail Modernization Double Track Project</i>	Yes
NCIC-013841	2007	Susan Fry and Adam Nickles/ Bureau of Reclamation	<i>National Historic Preservation Act, Section 106 Consultation for a Proposed Sheriff Compound at Folsom Dam, Sacramento County, California. (Project Tracking No. 07-CCAO-052)</i>	No
NCIC-013841A	2007	Adam Nickles/ Bureau of Reclamation	<i>Cultural Resource Inventory of Proposed Sheriff Compound, Folsom Recreation Area, Sacramento County, California, Project No. 07-CCAO-052</i>	No
NCIC-013842	2009	Michael Chotkowski/ Bureau of Reclamation	<i>National Historic Preservation Act, Section 106 Consultation for the Abandoned Mine Adit Closure Project at Folsom State Recreation Area, Sacramento County, California (Project No. 08-CCAO-170)</i>	Yes
NCIC-013842A	2008	Jonathan Connolly/ Bureau of Reclamation	<i>Reclamation Managing Water in the West for Project Tracking No.: 08CCAO0170, Abandoned Mine Closure at Folsom</i>	Yes
NCIC-013881	2005	Daryl Noble/ Department of Transportation	<i>Eligibility Determination for proposed replacement of Orangevale Avenue Bridge (No. 24C-0268), FHWA050324A</i>	No
NCIC-013881A	2005	Daryl Noble/ Caltrans	<i>Historic Property Survey Report, 03-SACOrangevale Avenue, 03-965100 3ENVR</i>	No
NCIC-013881B	2005	Milford Wayne Donaldson and Mike/ OHP; Caltrans	<i>SHPO Concurrence Letter-Replacement of the Orangevale Avenue Bridge, Folsom, Sacramento County (FWHA041229A)</i>	No
NCIC-013881C	2005	Andrew Hope/ California Department of Transportation	<i>Historic Resource Evaluation Report for the Re-Evaluation of the Orangevale Avenue Bridge (Bridge 24C0268) in Folsom (03-SacLocal)</i>	No
NCIC-013890	1993	Paul Turney/ Southern Pacific Lines	<i>Historic Report for the Southern Pacific Transportation Company Abandonment Exemption in Sacramento County</i>	Yes

Report Number	Year	Author/Affiliation	Title	Within Plan Area?
NCIC-013994	2021	Amanda Taylor and Jocelyn Brabyn Hunter/ Kleinfelder, Inc.	<i>Placer-Gold Hill #1 115Kv Routine Folsom Lake SRA 2021 188285</i>	Yes
NCIC-014076	2019	Melinda Peak and Robert Gerry/ Peak & Associates, Inc.	<i>Cultural Resource Assessment for the Vista Project at 9600 Greenback Lane, Folsom, Sacramento County, California</i>	No
NCIC-014160	2018	Nancy Sikes, Phil Hanes, and Cindy Arrington/ Natural Investigations Company	<i>Cultural and Paleontological Resources Inventory and Effects Assessment for the CalNet Fiber Optic Installation Project, El Dorado and Sacramento Counties, California</i>	Yes

Source: Compiled by Ascent in 2023.

Additional Research

Additional research included review of City of Folsom Cultural Resources Inventory and Historic Preservation Master Plan and the Sacramento County listings in the Built Environment Resources Directory (BERD).

Recommendations

Based on the results of the NCIC records search and additional research, the entire Folsom River District Master Plan Area is highly sensitive for cultural resources. As described above, the plan area is known to contain significant archaeological and built environment resources. While the majority of the area has been surveyed to some degree, many of the documented resources have not been evaluated for potential significance.

Due to the proximity of Lake Natoma, the plan area has a high degree of sensitivity for prehistoric and historic archaeological resources. Prior to the approval of any projects in the plan area, it is recommended that any area that has not been surveyed within the last 5 years be surveyed by a qualified archaeologist using current professionally accepted methods. Even if the results of the survey are negative, any project with the plan area that includes ground disturbance is likely to require subsurface testing. Tribal outreach will be essential in the planning of any projects in the plan area.

It is also likely that there are additional buildings and structures in the plan area that are at least 50 years of age that have not been documented and/or evaluated. These would have to be recorded through pedestrian survey and evaluated if a project was proposed that would alter or demolish any historic-age buildings or structures. Some of the older building evaluations do not meet current standards; therefore, reevaluation is recommended for those that were previously evaluated over 5 years ago. Building evaluations less than 5 years old should be peer reviewed to determine if all applicable eligibility criteria have been applied for the proposed project. Updates may be required even for evaluations that are less than 5 years old.

Personnel Qualifications

Amber Grady has over 22 years of environmental compliance and cultural resource management experience in California, Oregon, Washington, and Nevada. Her experience as an architectural historian includes archival research, historic building and structure surveys and evaluations, evaluating project for consistency with the Secretary of the Interior’s Standards, and cultural resources documentation for National Environmental Protection Act and CEQA projects ranging from single building evaluations to district-wide surveys for CEQA, NEPA, PRC 5024, and Section 106 compliance documents. Amber has completed evaluations for residential and industrial buildings; linear features such water conveyance, electrical conveyance, and railroad systems; and landscapes such as public parks. Amber received her Master of Arts in Historic Preservation from the Savannah College of Art and Design. She meets the Secretary of the Interior’s Professional Qualification Standards for architectural history and history.

If you have any comments or questions, please contact Amber Grady at 916.306.2643.

Appendix A

Cultural Resources (Confidential)