



Sacramento Tree Foundation Partnership

City Council Follow Up/Staff Recommendations



CITY OF
FOLSOM
DISTINCTIVE BY NATURE

Previous contract:

- \$60,000 for staff experts and tree programs
- \$100,000 for mitigation planting projects
 - \$160,000/year
 - \$480,000 total over 3 years

Renewed Contract:

- \$90,000 for staff experts and tree programs
- \$125,000 for mitigation planting projects
 - \$215,000/year
 - \$645,000 total over 3 years

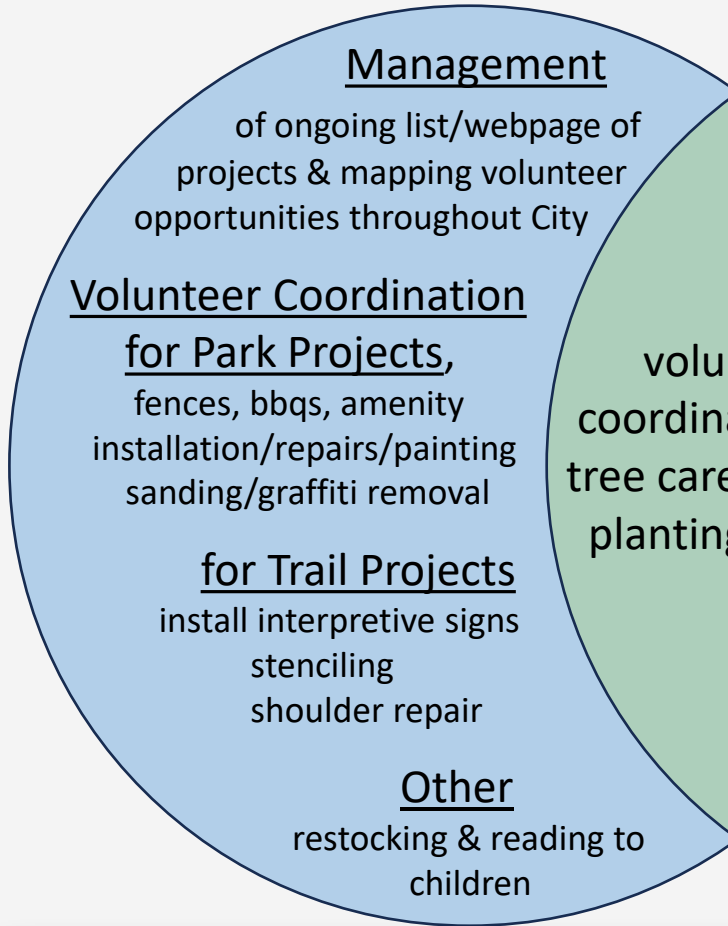
Tree Planting and Replacement Fund

- ❖ Funded by mitigation “in-lieu” fees collected from the removal of protected trees
- ❖ Inconsistent revenue source with diminishing replenishment long-term

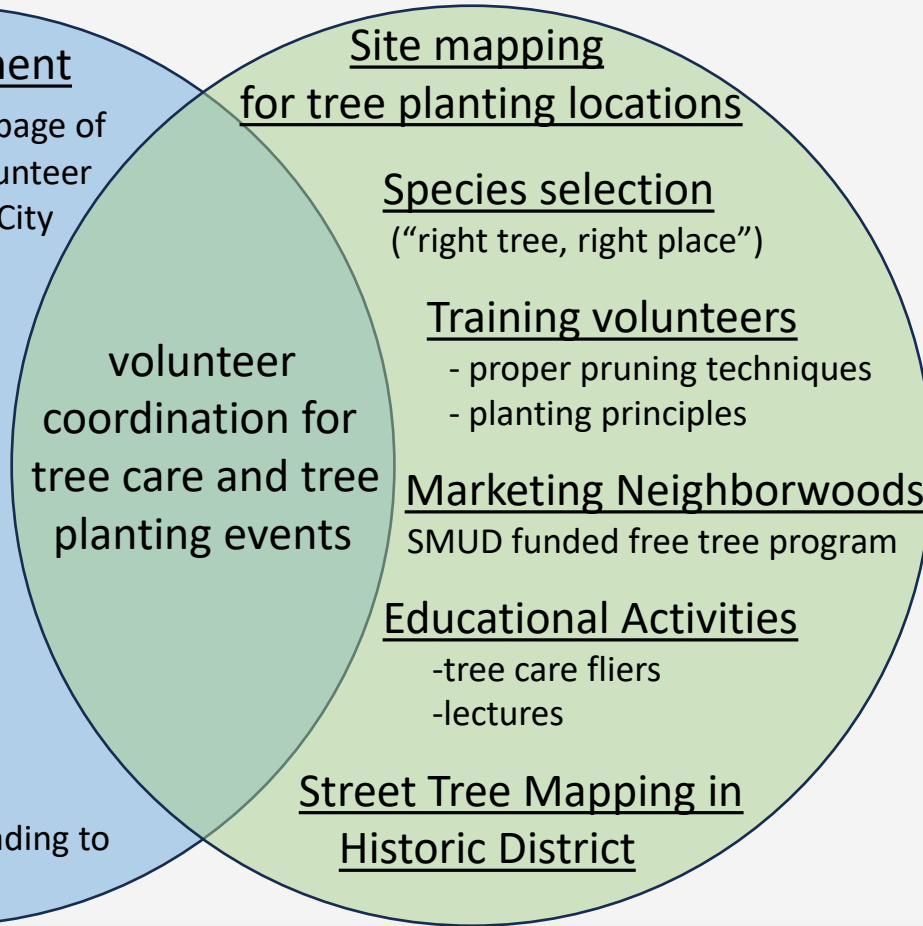
Sacramento Tree Foundation Partnership

City Council Follow Up/Staff Recommendations

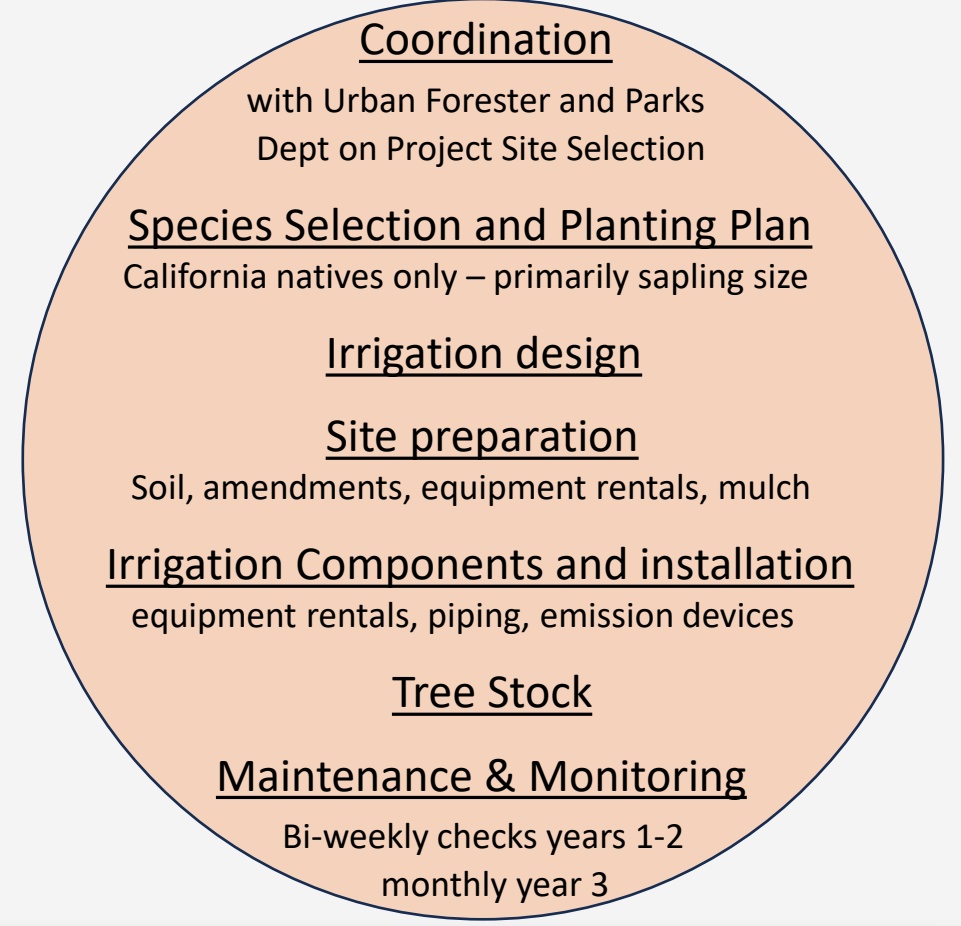
Volunteer Coordinator Sample Tasks



STF Urban Forestry Tasks (90K/Year)



STF Mitigation Planting Tasks (125K/Year)



volunteer coordination for tree care and tree planting events

Sacramento Tree Foundation Partnership

City Council Follow Up/Staff Recommendations



Sacramento Tree Foundation Partnership

City Council Follow Up/Staff Recommendations



City Staff, Sac Tree, and Volunteer Accomplishments in 2020-2023:

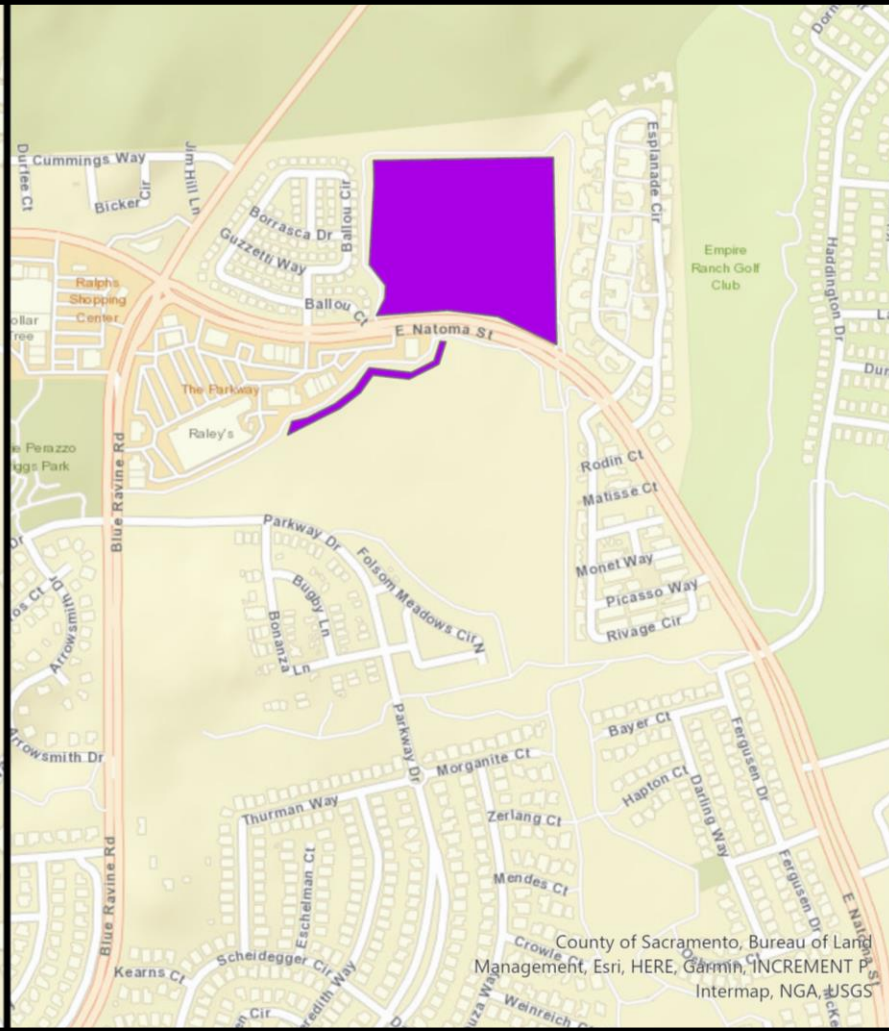
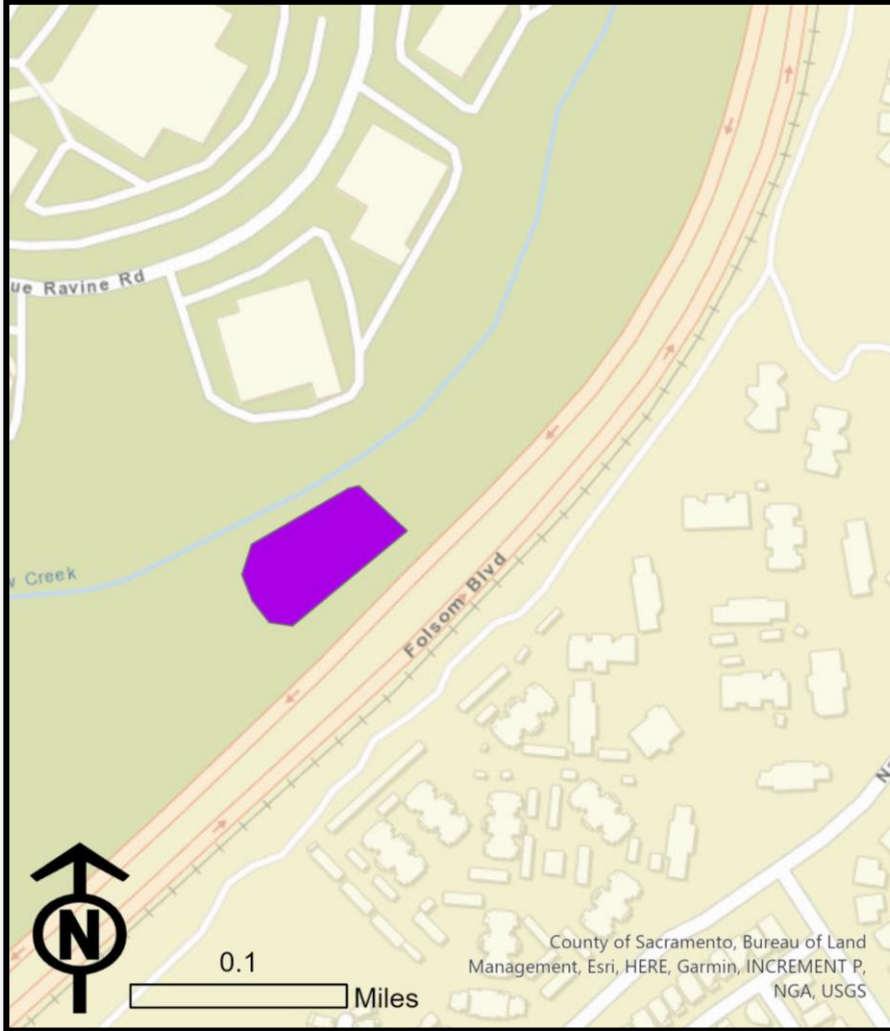
- ✓ Planning, designing, installation and maintenance of 420 native saplings
- ✓ Planting of 105 park and neighborhood trees through volunteer events
- ✓ Supply of 1098 trees through leveraging the SMUD funded free shade tree program
- ✓ Creation and distribution of 16,000+ educational mailers
- ✓ Planting and pruning demonstrations
- ✓ Application of 220+ cubic yards of mulch



Sacramento Tree Foundation Partnership
City Council Follow Up/Staff Recommendations

2022 – 130 saplings planted

2021 – 290 saplings planted



Sacramento Tree Foundation Partnership

City Council Follow Up/Staff Recommendations



Sacramento Tree Foundation



Mitigation/Tree Planting Proposal for:
East Natoma- 290 Trees

March 4, 2021

		Total	
Project Design		\$ 2,928.00	
Labor	\$ 2,928.00		
Site Preparation		\$ 8,715.60	
Labor	\$ 6,768.00		
Vehicles & Equipment Expense	\$ 1,564.80		
Supplies	\$ 382.80		
Installation		\$ 28,060.83	
Labor	\$ 13,680.00		
Vehicles & Equipment Expense	\$ 1,209.60		
Supplies	\$ 9,324.49		
Trees	\$ 3,846.74		
Design, Site Preparation and Installation		\$ 39,704.43	
Maintenance Year 1		\$ 34,447.62	
Labor	\$ 29,865.60		
Vehicles & Equipment Expense	\$ 3,026.40		
Supplies	\$ 267.00		
Trees	\$ 136.62		
Mapping, Monitoring, Reporting	\$ 1,152.00		
Maintenance Year 2		\$ 16,958.40	
Labor	\$ 13,560.00		
Vehicles & Equipment Expense	\$ 1,514.40		
Supplies	\$ 266.46		
Trees	\$ 45.54		
Volunteer Event	\$ 420.00		
Mapping, Monitoring, Reporting Labor	\$ 1,152.00		
Maintenance Year 3		\$ 19,085.76	
Labor	\$ 13,560.00		
Vehicles & Equipment Expense	\$ 1,478.40		
Supplies	\$ 1,023.36		
Mapping, Monitoring, Reporting Labor	\$ 3,024.00		
		Total	Per Tree
Design Prep and Installation	\$ 39,704.43	\$ 136.91	
Maint Yr 1	\$ 34,447.62	\$ 118.78	
Maint Yr 2	\$ 16,958.40	\$ 58.48	
Maint Yr 3	\$ 19,085.76	\$ 65.81	
Total	\$ 110,196.22	\$ 379.99	

Project schedule and expectations:

Year 1- Trees will exhibit healthy foliage year-round and will grow four to 12 inches dependent on species.

- Site will be flagged for USA and review of planting locations by Folsom staff
- Flag colors will be updated to indicate species locations for review by Folsom staff
- Necessary clearing and grubbing
- Irrigation installation and testing
- Planting will occur before (TBD)
- Mulch and plant protections will be installed at time of planting
- Each tree location will be mapped (Summer 2023) using GPS
- Summer-Fall
 - Weekly irrigation and inspection of irrigation system and trees
 - All weeds and competing vegetation kept clear of the establishment zone
 - Fire abatement clearing and management of tree protection materials
 - Assessment of replants needed and reasons for tree failure
- Winter-Spring
 - Bi-weekly site evaluation and adaptive management
 - Winter irrigation if needed
 - Replacement of failed trees
 - Structural pruning (double leaders and sprouts)
 - Proactive weed management (mulch/herbicide)

Year 2- Trees will exhibit healthy foliage year-round and will grow six to 24 inches dependent on species. Trees will exhibit secondary branching which will be retained whenever possible to support root growth and tree establishment.

- Trees will be monitored and data reported to Folsom
- Irrigation system will be evaluated and updated if needed to meet growth expectations
- Summer-Fall
 - Bi-weekly irrigation and inspection of irrigation system and trees
 - All weeds and competing vegetation kept clear of the establishment zone
 - Fire abatement clearing and management of tree protection materials
 - Assessment of replants needed and reasons for tree failure
- Winter-Spring
 - Winter irrigation if needed
 - Replacement of failed trees
 - Replacement of protection materials if needed
 - Structural pruning (double leaders and sprouts, clearance if applicable)
 - Proactive weed management (mulch/herbicide)

Year 3- Trees will exhibit healthy foliage year-round and will grow six to 24 inches dependent on species. By the end of this year, trees will have sufficient root growth and above ground size to be considered established. Future irrigation of native trees will not be necessary unless significant multi-year drought conditions have been experienced. Dependent on species, most trees will be 18 inches to 5 feet tall.

- Trees will be monitored and data reported to Folsom
- Irrigation system will be evaluated and updated if needed to meet growth expectations
- Summer-Fall
 - Irrigation every 21-38 days, as indicated by establishment and weather
 - Monthly inspection of irrigation system and trees
 - All weeds and competing vegetation kept clear of the establishment zone
 - Fire abatement clearing and management of tree protection materials
- Winter
 - Winter irrigation if needed
 - Replacement and/or removal of protection materials if needed
 - Structural pruning (leader establishment, management of temporary branches, species dependent)
 - Mulch re-application if needed
 - Collaboration with Folsom staff on pre-handoff activities (irrigation system, tree protection materials, etc.)
- Spring
 - Final inspection and reporting
 - Irrigation system decommissioning or hand-off to Folsom
 - Determination on retention or removal of tree protection materials (tubes, cages, etc.)

Recommended actions post year 3-

When implementing native tree planting projects in areas where tree structure is of importance (urban areas, locations where people may be present over the long term, places with infrastructure such as sidewalks and roadways), three years is usually not long enough for the trees to reach a size where critical structural pruning can occur. This is because the trees have not yet attained a size where permanent branches are present. We recommend that plantings be evaluated at year seven and that substantial structural pruning take place sometime between year 7 and year 12. Pruning should be cognizant of differences between tree species and natural growth patterns.

Sacramento Tree Foundation Partnership

City Council Follow Up/Staff Recommendations





Sacramento Tree Foundation Partnership

City Council Follow Up/Staff Recommendations



Upcoming Planned Events

- December 2, 2023:
Neighborhood tree planting in the Sierra Woods community
- December 9, 2023:
Folsom Ranch mitigation sapling planting



Sacramento Tree Foundation Partnership

City Council Follow Up/Staff Recommendations



Recommendation:

Adopt Resolution No. 11116 – A Resolution Authorizing the City Manager to Execute a Contract with Sacramento Tree Foundation for Tree Programs and Tree Planting and Maintenance for Three Years Commencing 2023

Sacramento Tree Foundation Partnership

City Council Follow Up/Staff Recommendations



CITY OF
FOLSOM
DISTINCTIVE BY NATURE