



**RIVER DISTRICT MASTER PLAN
CITIZENS ADVISORY COMMITTEE MEETING AGENDA
January 10, 2024, 6:00 PM
Folsom Community Center, RG Smith Meeting Room
52 Stafford Street, Folsom, CA**

COMMITTEE MEMBERS:

Lynne Bailey	Rita Mukerjee Hoffstadt	Krystal Moreno
Jennifer Cabrera	Karen Holmes	Scott Muldavin
Bruce Cline	Lisa Horton	Brian Murch
Claudia Cummings	Will Kempton	Mike Reynolds
Brian Dulgar	Jennifer Lane	Edward Roza
Pat Flynn	John Lane	Devin Swartwood
Joe Gagliardi	Barbara Leary	Crystal Tobias
Deborah Grassl	Jim Lofgren	Srinivas Yanaparti

CALL TO ORDER

ROLL CALL

BUSINESS FROM THE FLOOR

Members of the public are entitled to address the Committee concerning any item within the Committee's subject matter jurisdiction. Public comments are limited to no more than three minutes. Except for certain specific exceptions, the Committee is prohibited from discussing or taking action on any item not appearing on the posted agenda.

INFORMATION ITEMS – 30 min

1. River-associated and waterfront development case studies – presentation by subconsultant EPS
2. Corporation Yard – Adopted Rescission Order, Corporation Yard Clean Closure of Former Landfill (included with agenda)
3. SacRT 15-minute Light Rail Service Project press release (included with agenda)
4. CAC Meeting Notes from the December 13, 2023 meeting (included with agenda)

CAC WORK GROUP ACTIVITY/DISCUSSION

1. Interactive discussion and identification of potential Corporation Yard assets, areas of unique opportunities to meet the intent of the General Plan, as well as district elements such as hazards and potential constraints, cultural and environmental resources, adjacent residential areas, and nearby existing uses that will influence reuse of the Corporation Yard.
 - a. Group discussion regarding key opportunities and constraints – 15 min
 - b. Group discussion regarding “general” land use categories and priorities – 15 min
 - c. Group discussion regarding mix of general land uses – 45 min
 - d. Group report back on conceptual plans – 15 min

NEXT MEETING DATE

Wednesday, January 24, 2024 – 6:00 pm; Folsom Community Center, RG Smith Room

ADJOURNMENT

NOTICE: Members of the public are entitled to directly address the Committee concerning any item that is described in the notice of this meeting, before or during consideration of that item. If you wish to address the Committee on an issue which is on this agenda, please complete a blue/green speaker request card, and deliver it to a staff member prior to discussion of the item. When your name is called, stand to be recognized by the Chair and then proceed to the podium. If you wish to address the Committee on any other item of interest to the public, when the Chair asks if there is any "Business from the Floor," follow the same procedure described above. Please limit your comments to three minutes or less.

In compliance with the Americans with Disabilities Act, if you are a person with a disability and you need a disability-related modification or accommodation to participate in this meeting, please contact the City Manager's Office at (916) 461-6010, or mkasama@folsom.ca.us. Requests must be made as early as possible and at least two full business days before the start of the meeting.

Any documents produced by the City and distributed to the Committee regarding any item on this agenda will be made available at the City Clerk's Counter at City Hall located at 50 Natoma Street, Folsom, California during normal business hours.



Central Valley Regional Water Quality Control Board

17 May 2023

Marcus Yasutake, Director
City of Folsom
Environmental and Water Resources
50 Natoma Street
Folsom, California 95630

CERTIFIED MAIL
7022-2410-0001-5093-9739

NOTICE OF ADOPTION OF
RESCISSION ORDER R5-2023-0012
FOR
CITY OF FOLSOM
FOLSOM CORPORATION YARD, FORMER CLASS III LANDFILL
Sacramento County

Rescission Order R5-2023-0012 (hereafter Order) rescinding Waste Discharge Requirements for the clean closed Folsom Corporation Yard Former Landfill was adopted on **27 April 2023**. Successful completion of clean closure of a Waste Management Unit eliminates the need for any post-closure maintenance period and removes the Waste Management Unit from being subject to the State Water Board promulgated requirements of Title 27 (Title 27, Section 20950(2)(B)). On 19 October 2021, the Discharger recorded a Deed Notification Covenant with the Sacramento Recorder's Office which provides notice of certification of closure as described by Title 27, Section 21880 and deed notation as described by Title 27, Section 21170.

Rescission Order R5-2023-0012 does not prescribe further requirements for the clean closed Folsom Corporation Yard Former Landfill. Notwithstanding, the Regional Board reserves authority set forth in California Water Code section 13000 et seq. and Title 27, section 20005 et seq. to act in the event evidence developed in the future indicates the former landfill is a threat to water quality or public health. It further remains the City of Folsom's responsibility to comply with applicable requirements for the closed Folsom Corporation Yard Former Landfill as established or administered by other agencies such as the Department of Toxic Substances Control, CalRecycle and Local Enforcement Agency, if any.

MARK BRADFORD, CHAIR | PATRICK PULUPA, ESQ., EXECUTIVE OFFICER

11020 Sun Center Drive #200, Rancho Cordova, CA 95870 | www.waterboards.ca.gov/centralvalley

Marcus Yasutake
City of Folsom

- 2 -

17 May 2023

Please contact Jarrod Ramsey-Lewis at (916) 464-4762 or by email at Jarrod.Ramsey-Lewis@waterboards.ca.gov, or myself at (916) 464 1588 or Brad.Shelton@waterboards.ca.gov with questions regarding the content of the referenced Order.

 Digitally signed by Brad Shelton
Date: 2023.05.16 14:43:40 -07'00'
Water Boards

BRAD SHELTON, P.G.
Senior Engineering Geologist
Title 27 Permitting and Mining Unit

Enclosures: Adopted Order R5-2023-0012

cc (mail or e-mail):

Vaughn Fleischbein, City of Folsom
Rachel Gillis, Sacramento County Environmental Health
Rachel Beck, CalRecycle, Sacramento
Greggory Shaffer, Department of Toxic Substances Control, Cypress
Christopher Moskal, Office of Chief Counsel, SWRCB, Sacramento
Brianna St. Pierre, Land Disposal Program, DWQ, SWRCB
Howard Hold, Central Valley Water Board, Rancho Cordova
Todd Del Frate, Central Valley Water Board, Rancho Cordova

CALIFORNIA REGIONAL WATER QUALITY CONTROL BOARD
CENTRAL VALLEY REGION

Fresno Office
1685 "E" Street
Fresno, CA 93706-2007

Sacramento Office (Main)
11020 Sun Center Drive #200
Rancho Cordova, CA 95670-6114

Redding Office
364 Knollcrest Drive #205
Redding, CA 96002

[Regional Board Website](https://www.waterboards.ca.gov/centralvalley) (<https://www.waterboards.ca.gov/centralvalley>)

RESCISSION ORDER R5-2023-0012



ORDER INFORMATION

Order Type(s):	Rescission of Waste Discharge Requirements (WDRs)
Status:	ADOPTED
Program:	Title 27 Discharges to Land
Region 5 Office:	Sacramento
Discharger(s):	City of Folsom
Facility:	Folsom Corporation Yard Former Class III Landfill
Address:	1300 Leidesdorff Street, Folsom, California 95630
County:	Sacramento County
Parcel Nos.:	070-0031-002, 070-0032-001, 070-0032-005, 070-0033-001, 070-0033-002, 070-0033-003, 070-0034-001, 070-0034-002, 070-0041-001, and 070-0041-003
GeoTracker ID:	L10003513337
Prior Order(s):	R5-2008-0106; R5-1995-0246; R5-1989-0149; R5-1978-0020; Resolution R5-1969-0297

CERTIFICATION

I, PATRICK PULUPA, Executive Officer, hereby certify that the following is a full, true, and correct copy of the order adopted by the California Regional Water Quality Control Board, Central Valley Region, on 27 April 2023.



PATRICK PULUPA,
Executive Officer

REGIONAL BOARD INFORMATION

Sacramento Office (Main)

Rancho Cordova, CA 95670-6114

11020 Sun Center Drive #200

Telephone: (916) 464-3291

Fresno Office

1685 "E" Street

Fresno, CA 93706-2007

Telephone: (559) 445-5116

Redding Office

364 Knollcrest Drive #205

Redding, CA 96002

Telephone: (530) 224-4845

[Regional Board Website](https://www.waterboards.ca.gov/centralvalley)

(<https://www.waterboards.ca.gov/centralvalley>)

TABLE OF CONTENTS

TABLE INDEX	ii
GLOSSARY	iii
FINDINGS	1
Introduction	1
Materials Accompanying Order.....	2
Facility.....	2
Waste Classification & Permitting	4
Clean Closure of Landfill.....	5
Post Closure Monitoring.....	7
Satisfaction of Requirements	10
Procedural Matters.....	10
ACTION	11
ATTACHMENT A—SITE LOCATION MAP.....	12
ATTACHMENT B—FACILITY MAP	13
INFORMATION SHEET	14
Former Landfill.....	14
Clean Closure	14
Completion of Post-Closure Monitoring Period	15
Post-Closure Land Use.....	15

TABLE INDEX

Table 1—Summary of Waste Management Units (WMUs) Permitted under Previous
Orders 2

GLOSSARY

ADC	Alternative Daily Cover
Antidegradation Policy	Statement of Policy with Respect to Maintaining High Quality Waters in California, State Water Board Resolution 68-16
Basin Plan	<i>Water Quality Control Plan for the Sacramento and San Joaquin River Basins</i>
bgs	Below Ground Surface
BOD	Biological Oxygen Demand
C&D	Construction and Demotion Materials
CalRecycle	California Department of Resources Recovery and Recycling
CAP	Corrective Action Program
CAMP	Corrective Action Monitoring Program
CEQA	California Environmental Quality Act
CEQA Guidelines	California Code of Regulations, Title 14, section 15000 et seq.
C.F.R.	Code of Federal Regulations
COCs	Constituents of Concern
CPMP	Closure and Post-Closure Maintenance Plan
CQA	Construction Quality Assurance
Designated Waste	(a) Hazardous Waste subject to variance from management requirements per Health and Safety Code section 25143; and (b) Nonhazardous Waste containing pollutants that, under ambient conditions, could be released in concentrations exceeding applicable WQOs, or that could reasonably be expected to affect beneficial uses of water. (Wat. Code, § 13173.)
DMP	Detection Monitoring Program
DTSC	California Department of Toxic Substances Control

DWR	California Department of Water Resources
EC	Electrical Conductivity
EIR	Environmental Impact Report
EMP	Evaluation Monitoring Plan
FEMA	Federal Emergency Management Agency
GCL	Geocomposite Liner
Hazardous Waste	Wastes which, pursuant to Title 22, section 66261.3 et seq., are required to be managed in accordance with Division 4.5 of Title 22. (Title 27, § 20164; Title 23, § 2521(a).)
HDPE	High-Density Polyethylene
JTD	Joint Technical Document
LCRS	Leachate Collection and Removal System
LEA	Local Enforcement Agency
Leachate	Liquid formed by the drainage of liquids from waste or by the percolation or flow of liquid through waste. Leachate includes any constituents extracted from the waste and dissolved or suspended in the fluid. (Title 27, § 20164.)
LFG	Landfill Gas Condensate
MCE	Maximum Credible Earthquake
MDB&M	Mount Diablo Base and Meridian
MDL	Method Detection Limit
µg/L	Micrograms per Liter
mg/L	Milligrams per Liter
MPE	Maximum Probable Earthquake
msl	Mean Sea Level
MRP	Monitoring and Reporting Program

MSW	Municipal Solid Waste regulated under 40 C.F.R. part 258
MSWLF	Municipal Solid Waste Landfill
MW	Monitoring Well
RCRA	Resource Conservation and Recovery Act
ROWD	Report of Waste Discharge
SPRRs	Standard Provisions and Reporting Requirements
Subtitle D	USEPA-promulgated MSW regulations under RCRA (see 40 C.F.R. part 258)
TDS	Total Dissolved Solids
Title 22	California Code of Regulations, Title 22
Title 23	California Code of Regulations, Title 23
Title 27	California Code of Regulations, Title 27
USEPA	United States Environmental Protection Agency
VOCs	Volatile Organic Compounds
WDRs	Waste Discharge Requirements
WMU	Waste Management Unit
WQOs	Water Quality Objectives
WQPS	Water Quality Protection Standard

CALIFORNIA REGIONAL WATER QUALITY CONTROL BOARD
CENTRAL VALLEY REGION
RESCISSION ORDER R5-2023-0012
FOR
CITY OF FOLSOM
FOLSOM CORPORATION YARD, FORMER CLASS III LANDFILL
Sacramento County

FINDINGS

The Central Valley Regional Water Quality Control Board (Central Valley Water Board) hereby finds as follows:

Introduction

1. The City of Folsom (Discharger) owns and operates the clean closed City of Folsom Corporation Former Landfill (Facility) at the Folsom Corporation Yard on Leidesdorff Street near Lake Natoma in the City of Folsom in Sacramento County, Section 35, Township 10 North, Range 27 East, Mount Diablo Base and Meridian (MDB&M). The Facility's location is depicted on the Site Location Map in **Attachment A**.
2. The Facility is situated on an 18-acre property comprised of Assessor's Parcel Numbers (APNs) 070-0031-002, 070-0032-001, 070-0032-005, 070-0033-001, 070-0033-002, 070-0033-003, 070-0034-001, 070-0034-002, 070-0041-001, and 070-0041-003. The address associated with the Facility is 1300 Leidesdorff Street, Folsom, California 95630.
3. On 31 July 2008 the Central Valley Water Board adopted Waste Discharge Requirements (WDRs) Order No. R5-2008-0106 for Clean Closure and Post-Closure Maintenance and Monitoring of the Facility.
4. As the Facility's owner and operator, WDRs Order No. R5-2008-0106 regulated monitoring and post-closure maintenance of the former Waste Management Units (WMU) listed in **Table 1**.

**Table 1—Summary of Waste Management Units (WMUs)
Permitted under Previous Orders**

Unit	Type	Class	Size	Status
WMU I	Waste Pile	Class III	3.2 acres	Closed
Uncontrolled Fill Area (UFA)	Waste Pile	Class III	1.1 acres	Closed

See Glossary for definitions of terms and abbreviations in table.

Materials Accompanying Order

5. The following materials are attached to this Order, and incorporated herein:

ATTACHMENT A—SITE LOCATION MAP

ATTACHMENT B—FACILITY MAP

Information Sheet for Rescission Order (Information Sheet)

6. Additional information about the Facility is set forth in the Information Sheet, which is incorporated as part of these findings.

Facility

7. The Facility is within the American River corridor on a slight bluff along the eastern side of Lake Natoma, about 3.3 miles downstream of the Folsom Dam and 2.6 miles upstream of the Nimbus Dam. The Facility is near the site of historic Black Miner’s Bar, a former gold rush era boomtown, and much of the area is built on dredge tailings from historical mining activities. Facility elevations range from about 166 feet above mean sea level (MSL) at the northeast end of the Facility to about 145 feet MSL along the southwest Facility perimeter along the riverbank. Groundwater beneath the Facility does not appear influenced by

or in connection with the Lake Natoma water levels or onsite domestic or municipal supply wells.

8. From approximately 1951 to 1973 and prior to construction of WMU I, the City of Folsom Sewage Treatment Plant occupied the area. The Central Valley Water Board regulated the Folsom Sewage Treatment Plant pursuant to Resolution R5-1951-083 and Resolution R5-1969-0297. The Discharger disconnected and removed the sewage treatment plant discharge pipeline in 1976 and 1999, respectively. The Discharger installed WMU I within the berms of the former Folsom Sewage Treatment Plant wastewater ponds.
9. The Facility operated WMU I from 1974 until 1987, accepting street cleaning and other wastes from City of Folsom owned and/or operated facilities. While the Facility was not open to the public, some unauthorized public dumping occurred immediately south of WMU I in the 1.1-acre UFA. The WMU I and the UFA were unlined and did not have a leachate collection and recovery system. There were no surface impoundments at the Facility.
10. The Facility stopped accepting wastes in 1987. In 1996, the Discharger closed WMU I (i.e., graded and clay capped) in accordance with Title 23 California Code of Regulations, Division 3, Chapter 15 (now Title 27 California Code of Regulations, Division 2 (Title 27) regulations).
11. In 1996, the Discharger commenced post-closure monitoring and maintenance of the Facility under WDRs Order R5-1995-0246 and later, WDRs Order R5-2008-0106.
12. From October 2008 through September 2009, with breaks during the winter rainy season, the Discharger performed activities to clean close the Facility.
13. The Discharger uses the Facility for parking, to store City equipment, vehicles, and other similar municipal corporation yard uses.

Waste Classification & Permitting

14. The Facility is a former municipal solid waste (MSW) landfill regulated under authority given in Water Code section 13000 et seq.; California Code of Regulations, Title 27 ("Title 27"), section 20005 et seq and related predecessor statutes and regulations. Waste Discharge Requirements (WDRs) Order No. R5-1978-0020; R5-1989-0149; and R5-1995-0246; implemented these and related predecessor statutes and regulations for the Facility prior to the adoption of WDRs Order No. R5-2008-0106.
15. The Facility is not subject to federal MSW regulations promulgated under the Resource Consideration Recovery Act (RCRA) (42 U.S.C. § 6901 et seq.) Subtitle D regulations (Title 40, Code of Federal Regulations, Part 258) because it ceased accepting wastes before the effective date of those regulations, 9 October 1991. Typically referred to as "Subtitle D," these regulations are now codified as 40 C.F.R. part 258 and implemented in part through the provisions Title 27 and in accordance with State Water Resources Control Board (State Water Board) Resolution 93-62.
16. In WDRs Order R5-2008-0106, the Central Valley Water Board classified the Facility's waste management unit as an existing Class III waste management unit (WMU) and the UFA is an existing unclassified WMU and prescribed requirements for clean closure of the Facility, pursuant to Title 27 and required the Discharger to maintain financial assurances and continue to implement background and detection monitoring.
17. Monitoring & Reporting Program (MRP) R5-2008-0106 accompanied WDRs Order R5-2008-0106 and implemented the provisions of WDRs Order R5-2008-0106, including installation and operation of a groundwater corrective action monitoring system for the purpose of monitoring the nature and extent of release from the WMUs and the progress of corrective action, pursuant to Title 27 Sections 20425 and 20430.

Clean Closure of Landfill

18. For clean closed landfills, the goal of closure is to physically remove all waste and contaminated materials from the WMU and from its underlying and surrounding environs, such that the waste in the WMU no longer poses a threat to water quality. The purpose of clean closure is to render the landfill (including all surrounding environs contaminated by waste released from the landfill) no longer capable of posing a threat to water quality. Successful completion of clean closure eliminates the need for any post-closure maintenance period and removes the WMU from being subject to the State Water Resources Control Board promulgated requirements of Title 27 (Title 27 Section 20950(a)(2)(B) and 21090(f)).
19. The Discharger documented clean closure activities in its Landfill Clean Closure Certification Report prepared by Brown and Caldwell Consultants, dated 4 November 2009 (Certification Report). The Certification Report includes Construction Quality Assurance documentation; describes and documents the excavation, segregation, characterization and disposal or recycling of removed materials; provides results of confirmation sampling and air monitoring conducted during clean closure; describes data quality review; and describes restoration activities and post-closure land use. The Certification Report concludes with a certification of clean closure of the Facility pursuant to the requirements of 27 CCR section 21090(f) and section 21810 as detailed in WDRs R5-2008-0106.
20. According to the Certification Report, the Discharger excavated and removed approximately than 100,000 cubic yards of material from the Facility, including the landfill cap, fill, former wastewater lagoon liner, and any contaminated soils underlying the WMUs. Approximately 92% of the WMU fill material was composed of soil and cobbles with the remainder consisting of construction and demolition debris, green waste, street litter, and other waste from municipal activities.

21. The Discharger employed mechanical and manual methods to segregate concrete, asphalt, metal, tires, and refuse from the soil and cobbles for off-site recycling or disposal. The Discharger chemically tested the segregated soils and compared the results to regulatory approved cleanup goals to determine if the soil was suitable for backfill on-site or if the soil had to be disposed off-site at an appropriate facility. Confirmation testing was performed at the bottom of the excavation and the analytical results were compared to the cleanup goals to confirm that impacted soil had been removed prior to backfilling.
22. The Discharger backfilled excavated materials with clean soil covered by asphalt and clean aggregate, as described in the Certification Report.
23. Mitigation measures conducted during the clean closure activities included air monitoring, dust suppression, and protection of habitat. Final field activity consisted of final grading and implementing storm water best management practices (BMPs) including hydro-seeding with grass to stabilize it and prevent erosion during winter storms.
24. In a 13 January 2010 letter, the Executive Officer wrote “[a]s documented in the [Certification Report], all soil cleanup goals for the project were achieved.” The Executive Officer further wrote that “[t]he clean closure project activities were implemented consistent with the WDRs, [Clean Closure Plan], and Title 27 regulations.”
25. In a 14 January 2010 letter, the California Department of Toxic Substances Control (DTSC), wrote that “... based on our review of the [Certification Report] documentation, DTSC provides concurrence with the approval determination by ... lead agencies that the Site has been closed in accordance with the requirements of Title 27, California Code of Regulations ... section 21810(e).” DTSC further wrote that “...the Site property has been remediated to a level that is protective of public health and the environment, and is suitable for future unrestricted use.”

26. In 20 January 2010 electronic mail, CalRecycle acknowledged the Discharger's Certification Report and concurred that clean closure "...was completed as approved and in accordance with applicable standards" and that "... the Facility is no longer a threat to public health and safety and that no further [Local Enforcement Agency] inspections of the Facility are required."

Post Closure Monitoring

27. Post-closure maintenance period shall extend as long as the wastes pose a threat to water quality. In WDRS Order R5-2008-0106, Post Closure Specification E.9, the Central Valley Water Board required the post-closure maintenance and monitoring period for the Facility to continue until such time as:
- a. The landfill has been clean closed in accordance with Title 27 Sections 20950(a)(2)(B) and 21090(f); or
 - b. The Regional Water Board otherwise finds that the landfill no longer threatens water quality and that groundwater quality at the site has returned to compliance with the Water Quality Protection Standard.
28. In WDRS Order R5-2008-0106, Monitoring Specification G.27, the Central Valley Water Board required that prior to termination of corrective action measures required under Section 20430(c), the Discharger shall demonstrate, pursuant to Section 20430(f), that the constituents of the release have been reduced to levels below concentration limits throughout the entire zone affected by the release. During this "proof period", the Discharger shall demonstrate that:
- a. The concentration of each constituent in each sample from each monitoring point remained at or below its concentration limit for at least one year, beginning immediately after the suspension of corrective action measures; and

- b. The individual sampling events for each monitoring point must have been evenly distributed throughout the proof period and have consisted of at least eight sampling events per year per monitoring point.
29. In August 2017, the Discharger installed three additional groundwater monitoring well pairs, in locations surrounding the former landfill in order to revise the groundwater monitoring network and more accurately assess the hydrogeologic conditions surrounding the former landfill, as described in Groundwater Monitoring Well Installation Report, dated 12 December 2017 and depicted in **Attachment B**. Each well pair includes one well in the upper water bearing zone (UWBZ) and one well in the Lower Water Bearing Zone (LWBZ). The Discharger commenced sampling and analyses from the updated groundwater monitoring network in the third quarter of 2017.
30. In its 2019 Annual Monitoring Report, dated 8 January 2020, the Discharger requested rescission of Order No. R5-2008-0106 and cessation groundwater monitoring at the Facility. To support the request, the Discharger provided data and analyses relating to groundwater elevation and geochemistry for the UWBZ and LWBZ and recommended collecting additional data during quarterly groundwater in the 2020 calendar year, perform statistical analysis, and upon completion of 3 year of monitoring and sampling, reevaluate the site for closure.
31. In a 23 January 2020 letter, Central Valley Water Board staff summarized its review of the Discharger's 2019 Annual Monitoring Report. In the letter, Central Valley Water Board staff stated that an additional year of monitoring and sampling would be required to demonstrate three years of concentrations meeting the new proposed Water Quality Protection Standards.
32. In its 2020 Annual Monitoring Report, dated 7 January 2021, the Discharger requested rescission of Order No. R5-2008-0106 and cessation groundwater monitoring and decommissioning of the groundwater monitoring well network at the Facility. To support the request, the Discharger provided data and analyses

relating to groundwater elevation and geochemistry associated with 12 groundwater sampling events from the UWBZ and LWBZ.

33. In a 26 January 2021 letter, Central Valley Water Board staff summarized its review of the Discharger's 2020 Annual Report. In the letter, Central Valley Water Board staff noted that the groundwater monitoring wells installed prior to 2017 were constructed with screen intervals that intersected both the UWBZ and LWBZ, allowing the mixing of the two groundwaters. Central Valley Water Board staff stated that the mixing of groundwater within the wells may result in groundwater samples unrepresentative of either water bearing zone or true background conditions. As a result of this mixing condition, the proposed Water Quality Protection Standards could not be achieved. Based on its analysis, Central Valley Water Board staff concluded groundwater encountered within the LWBZ is the aquifer used to evaluate the success of clean closure for the Facility.
34. In the 26 January 2021 letter, Central Valley Water Board staff clarified that the based on the available information and to have the required amount of data to develop a statistical analysis, the "proof period" for the Discharger for monitoring and sampling following the clean closure of the Facility, is a minimum of eight sample events, noting 12 groundwater sample events had occurred following the groundwater monitoring well installation event in 2017. Central Valley Water Board staff evaluated the Discharger's statistical analysis of the 12 groundwater sample events included the Discharger's Annual 2020 Groundwater Monitoring report. Based this evaluation of the statistical analysis and groundwater concentrations reported in samples analyzed, Central Valley Water Board staff concluded the Discharger met the requirements of WDRs Order R5-2008-0106 and Title 27 for demonstrating clean closure of the Facility.
35. In a 17 May 2021 Monitoring Well Destruction Report, the Discharger certified that "[a]ll Site wells have been properly abandoned per the Water Board's

January 26, 2021 letter” and requested rescission of WDRs Order R5-2008-0106.

36. In a 1 February 2023 inspection Central Valley Water Board staff verified the Discharger clean-closed former landfill.
37. On 16 February 2023, the Discharger provided proof of filing of detailed description of the closed Facility and its former use as an unlined landfill, including a map, with the Sacramento County Recorder (Document No. 202110191749), pursuant to Title 27, section 21170.

Satisfaction of Requirements

38. The Discharger clean closed the Facility in accordance with WDRs Order R5-2008-0106 and Title 27 Sections 20950(a)(2)(B) and 21090(f). Based on the available information, the former WMUs at the Facility no longer threatens water quality and the Discharger demonstrated that that groundwater quality in the LWBZ beneath the Facility is consistent with the Water Quality Protection Standard.
39. The Discharger demonstrated that the Waste Management Units formerly at the Facility no longer threaten water quality and that groundwater quality at the site has returned to compliance with the Water Quality Protection Standard.

Procedural Matters

40. The Discharger, interested agencies, and interested persons were notified of the Central Valley Water Board’s intent to rescind WDRs Order R5-2008-0106 and provided an opportunity to submit their written views and recommendations at a public hearing. (Wat. Code, § 13167.5; Title 27, § 21730.)
41. At a public meeting, the Central Valley Water Board heard and considered all comments pertaining to this Order.

42. Any person aggrieved by this Central Valley Water Board action may petition the State Water Board for review in accordance with Water Code section 13320 and California Code of Regulations, title 23, section 2050 et seq. To be timely, the petition must be received by the State Water Board by 5:00 pm on the 30th day after the date of this Order; if the 30th day falls on a Saturday, Sunday or state holiday, the petition must be received by the State Water Board by 5:00 pm on the next business day. The law and regulations applicable to filing petitions are available on the [State Water Board website](http://www.waterboards.ca.gov/public_notices/petitions/water_quality) (http://www.waterboards.ca.gov/public_notices/petitions/water_quality). Copies will also be provided upon request.

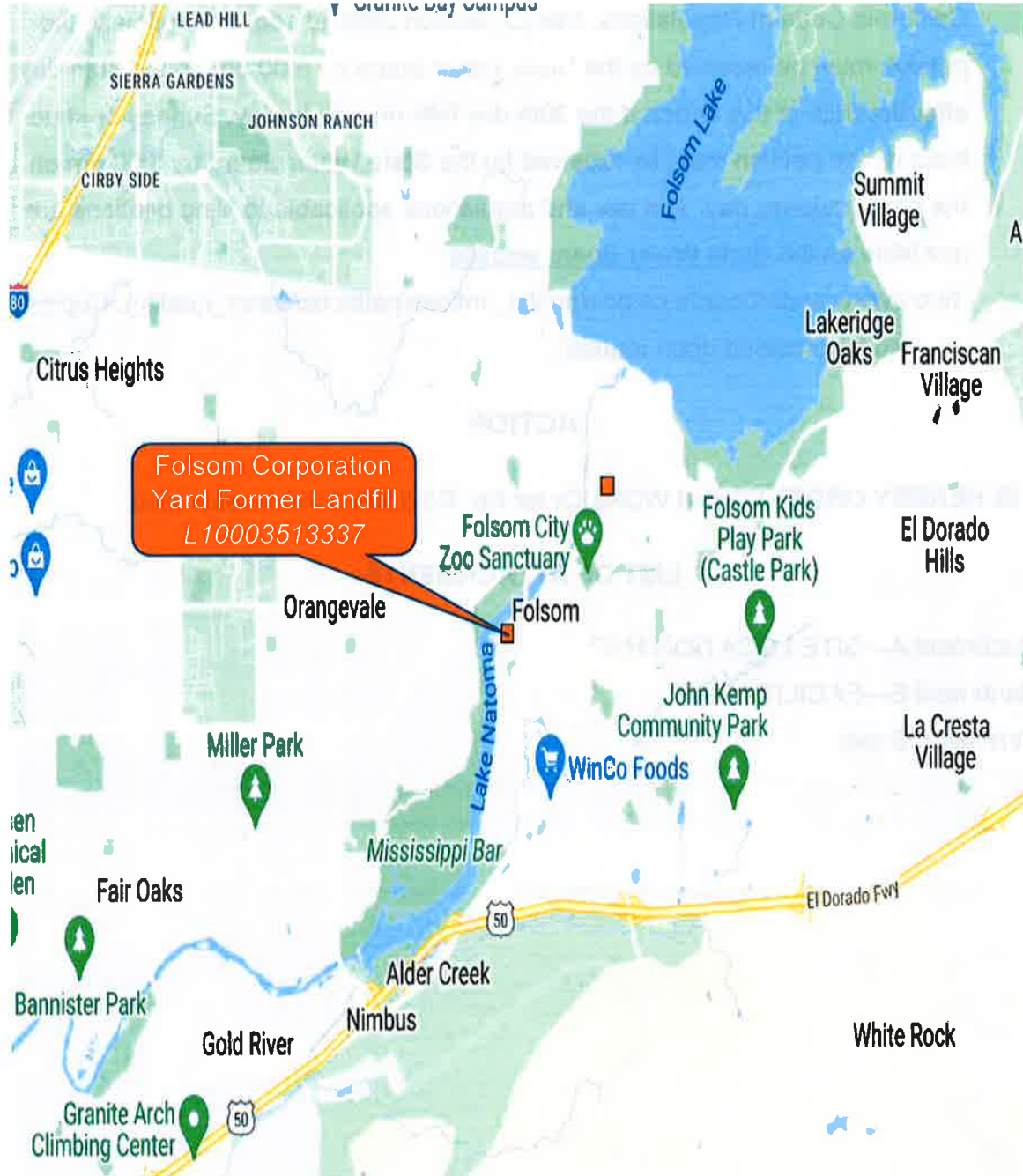
ACTION

IT IS HEREBY ORDERED that WDRs Order No. R5-2008-0106 is rescinded.

LIST OF ATTACHMENTS

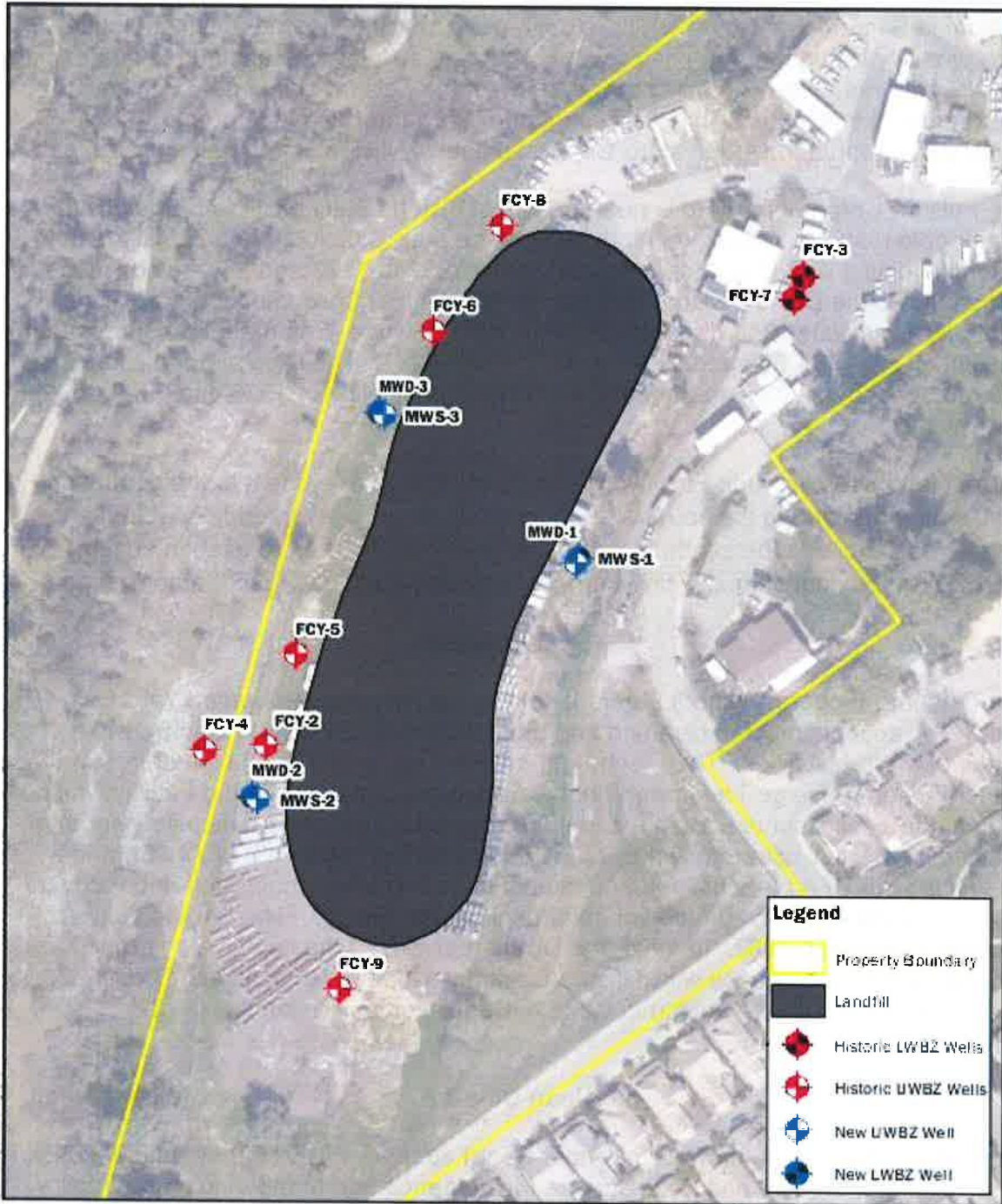
Attachment A—SITE LOCATION MAP
Attachment B—FACILITY MAP
Information Sheet

ATTACHMENT A—SITE LOCATION MAP



Folsom Corporation Yard Former Landfill, L10003513337 (GeoTracker®), not to scale

ATTACHMENT B—FACILITY MAP



Folsom Corporation Yard Former Landfill, January 2021 Annual Report, not to scale

INFORMATION SHEET

The City of Folsom ("Discharger") owns and operates the clean closed former Folsom Corporation Landfill (Facility), on Leidesdorff Street near Lake Natoma in the City of Folsom in Sacramento County. The Discharger's municipal corporation yard is an 18-acre property within the American River corridor on a slight bluff along the eastern side of Lake Natoma, about 3.3 miles downstream of the Folsom Dam and 2.6 miles upstream of the Nimbus Dam. At present, the Discharger uses the property as a municipal corporation yard to store City equipment, vehicles, and other similar uses.

The Folsom Corporation Yard is near the site of historic Black Miner's Bar townsite, a former gold rush era boomtown, and much of the area is built on dredge tailings from historical mining activities. From approximately 1951 to 1973 and prior to construction of the landfill, the City of Folsom Sewage Treatment Plant occupied the area. The Central Valley Water Board regulated the Folsom Sewage Treatment Plant pursuant to Resolution R5-1951-083 and Resolution R5-1969-0297. The Discharger disconnected and removed the sewage treatment plant discharge pipeline in 1976 and 1999, respectively.

Current land uses near the Facility include residential development to the south and east; state park land to the southwest and northwest; a cemetery (adjacent to the private residences to the south); commercial development (i.e., to east on edge of downtown); and industrial development (i.e. City corporation yard to the northeast).

Former Landfill

The Discharger operated the 3.2-acre landfill at the Folsom Corporation Yard from 1974 until 1987, accepting street cleaning and other wastes from City of Folsom owned and/or operated facilities. The Discharger installed the landfill within the berms of the former Folsom Sewage Treatment Plant wastewater ponds. While the Facility was not open to the public, some unauthorized public dumping occurred immediately south of the landfill, in a 1.1-acre referred to as the "Uncontrolled Fill Area" (UFA). Both the landfill and the UFA were unlined and did not have a leachate collection and recovery system. There were no surface impoundments at the Facility. The Facility stopped accepting wastes in 1987. In 1996, the Discharger closed the landfill (i.e., graded and clay capped) in accordance with Title 23 California Code of Regulations, Division 3, Chapter 15 (now Title 27 California Code of Regulations, Division 2 (Title 27) regulations.

Clean Closure

On 31 July 2008 the Central Valley Water Board adopted WDRs Order No. R5-2008-0106 for Clean Closure and Post-Closure Maintenance and Monitoring of the Facility. From October 2008 through September 2009, with breaks during the winter rainy season, the Discharger performed activities to clean close the Facility.

The Discharger excavated and removed approximately 100,000 cubic yards of material, including the landfill cap, fill, former wastewater lagoon liner, and contaminated soils underlying the WMUs. The Discharger backfilled excavated materials with clean soil and covered with asphalt and clean aggregate.

In January 2010, the Executive Officer recognized that the Discharger implemented clean closure activities for the former landfill in a manner consistent with Title 27 and WDRs Order No. R5-2008-0106. The Executive Officer further directed the Discharger to continue postclosure monitoring and implement any additional corrective actions necessary to achieve compliance with the Water Quality Protection Standards, as required by WDRs Order No. R5-2008-0106 and Title 27 section 21090(f)(1). The Department of Toxic Substances Control and CalRecycle both also affirmed the Discharger implemented clean closure activities in a manner consistent with applicable statutes, regulations, and plans.

Completion of Post-Closure Monitoring Period

The Discharger clean closed the Facility in accordance with WDRs Order R5-2008-0106 and Title 27 Sections 20950(a)(2)(B) and 21090(f). Based on the available information, including completion of post-closure monitoring, the Discharger demonstrated that groundwater quality beneath the Facility returned to compliance with the Water Quality Protection Standard and the former landfill and "Uncontrolled Fill Area" no longer threaten water quality. In Spring 2021, the Discharger decommissioned all monitoring devices at the Facility pursuant to State standards.

Post-Closure Land Use

Successful completion of clean closure of a landfill unit eliminates the need for any post-closure maintenance period and removes the Waste Management Unit from being subject to the State Water Board promulgated requirements of Title 27 (Title 27, Section 20950(2)(B)). On 19 October 2021, the Discharger recorded a Deed Notification Covenant with the Sacramento Recorder's Office which provides notice of certification of closure as required by Title 27, Section 21880 and deed notation as required by Title 27, Section 21170.

By rescinding WDRs Order No. R5-2008-0106, the Regional Board does not cede authority set forth in California Water Code section 13000 et seq. or Title 27, section 20005 et seq. and does not relieve the Discharger from the requirements of other state agencies (including the agents of such agencies) such as CalRecycle and Local Enforcement Agency in the event evidence developed in the future indicates the former landfill is a threat to water quality or public health.



Media Contact
Jessica Gonzalez
jgonzalez@sacrt.com
916-662-0342

For Immediate Release
December 13, 2023

SacRT to Begin Construction for Folsom 15-Minute Light Rail Service Project *Shuttle Bus Service and Road Closures in Place During Construction*

SACRAMENTO, CA — The Sacramento Regional Transit District (SacRT) is announcing the start of construction for the Folsom 15-Minute Light Rail Service Project. Beginning on Tuesday, January 2, 2024, SacRT will begin construction to add a passing track at the Glenn/Robert G. Holderness Station. This is a pivotal step toward achieving 15-minute light rail service for all Folsom area stations, including Hazel, Iron Point, Glenn/Robert G. Holderness and Historic Folsom.

During the construction period, which is anticipated to conclude in summer 2024, there will be temporary suspension of light rail service between Iron Point and Historic Folsom stations. SacRT will provide supplemental shuttle bus services for affected customers traveling to between Iron Point, Glenn/Robert G. Holderness and Historic Folsom stations. Alternatively, customers may utilize SacRT's free park-and-ride lots at Iron Point, Hazel, and Sunrise stations.

Road Closures and Traffic Adjustments:

In conjunction with the construction activities, road closures will be implemented starting Tuesday, January 2, 2024. The northbound stretch of Folsom Boulevard, between Bidwell Street and Parkshore Drive, will experience lane closures. Glenn Drive will also be closed between Folsom Boulevard and Coolridge Drive.

During this period, the two northbound lanes closest to the train tracks will be closed to vehicular traffic. To ensure safety, redirected traffic will utilize the adjacent southbound lanes for both directions of travel. Folsom Boulevard will be reduced to one lane in both directions, with a speed limit of 35 mph. These lane closures will be in effect seven days a week until the completion of the project in summer 2024.

To alleviate potential traffic congestion, motorists are advised to consider alternative routes and adjust travel times whenever possible.

Future Benefits:

Upon the successful completion of the Folsom 15-Minute Light Rail Service Project in summer 2024, SacRT will introduce 15-minute service at all Folsom area stations, utilizing state-of-the-art new low-floor light rail trains.

For more detailed information about the project and shuttle bus information, please visit sacrt.com/Folsom15.

###

SacRT is the American Public Transportation Association's (APTA) Outstanding Public Transportation System of the Year award recipient in North America for accomplishment and innovations in public transportation, the 2023 APTA Rail Safety Certificate of Merit for light rail/streetcar systems, the 2022 and 2019 national TSA Gold Standard Security Award recipient for the highest standard of excellence, and the 2021 and 2020 national APTA Rail Safety Gold Award recipient for its multi-faceted and innovative approach to reducing crime and fare evasion. SacRT operates approximately 82 bus routes (fixed-route, dial-a-ride and microtransit); 43 miles of light rail serving 53 stations; and ADA paratransit services all within a 440-square mile service area throughout Sacramento County, which includes service in the cities of Sacramento, Citrus Heights, Elk Grove, Folsom and Rancho Cordova. April 1, 2023, marked SacRT's 50th anniversary of operation, celebrating our five decades of historic milestones.



**RIVER DISTRICT MASTER PLAN
CITIZENS ADVISORY COMMITTEE MEETING NOTES
December 13, 2023, 6:00 PM
Folsom Community Center, RG Smith Meeting Room
52 Stafford Street, Folsom, CA**

COMMITTEE MEMBERS:

Lynne Bailey	Rita Mukerjee Hoffstadt	Krystal Moreno
Jennifer Cabrera	Karen Holmes	Scott Muldavin
Bruce Cline	Lisa Horton	Brian Murch
Claudia Cummings	Will Kempton	Mike Reynolds
Brian Dulgarr	Jennifer Lane	Edward Roza
Pat Flynn	John Lane	Devin Swartwood
Joe Gagliardi	Barbara Leary	Crystal Tobias
Deborah Grassl	Jim Lofgren	Srinivas Yanaparti

CALL TO ORDER – 6:07 pm

ROLL CALL

Present: Jennifer Cabrera, Bruce Cline, Brian Dulgarr, Joe Gagliardi, Deborah Grassl, Rita Mukerjee Hoffstadt, Karen Holmes, Will Kempton, Jennifer Lane, John Lane, Jim Lofgren, Krystal Moreno, Scott Muldavin, Mike Reynolds, Crystal Tobias

Absent: Lynne Bailey, Claudia Cummings, Pat Flynn, Lisa Horton, Barbara Leary, Brian Murch, Edward Roza, Devin Swartwood, Srinivas Yanaparti

BUSINESS FROM THE FLOOR

Members of the public are entitled to address the Committee concerning any item within the Committee's subject matter jurisdiction. Public comments are limited to no more than three minutes. Except for certain specific exceptions, the Committee is prohibited from discussing or taking action on any item not appearing on the posted agenda.

1. Michael Harris spoke to address some additional local historical information that he believed should be added to the documentation provided, and specifically wanted to ensure details are chronological and that the complete history is considered.
2. Jim Michael (State Parks Sr. Planner) discussed State Parks General Plan ideas for the central area, which included the following (some planned for the future and some currently underway):
 - welcome center/cultural center
 - bridge pillar mural project
 - trail connections and shoreline trails including connection at American River Canyon/Greenback Lane
 - improved vehicle access at Willow Creek and Black Miners Bar
 - prevention of j-walking at Riley Street near the Powerhouse Interpretive Center (underpass connection or under Rainbow Bridge)
 - better integration of the Powerhouse SHP within the Historic District
 - bridge across the gorge in the North Subarea to connect trails on either side of the river
 - potential to improve access all the way to the old dam (coordination required with CDCR)

ACTION ITEM

1. **Folsom Blvd Overcrossing, Preferred Alternatives Review and Recommendation to City Council - Presentation from Parks and Recreation Department - Brett Bollinger, Sr. Trails Planner**

Motion by Jim Lofgren to recommend to City Council approval of the North Alternative Alignment as the preferred alignment for the Folsom Boulevard Overcrossing Project. Committee comments included concern over animal deaths occurring from crossing Folsom Blvd and need for a “critter crossing.”

Motion seconded by Bruce Cline.

Ayes: Jennifer Cabrera, Bruce Cline, Brian Dulgar, Joe Gagliardi, Rita Mukerjee Hoffstadt, Karen Holmes, Will Kempton, John Lane, Jim Lofgren, Scott Muldavin, Mike Reynolds

Nos: Deborah Grassl, Jennifer Lane, Krystal Moreno

Abstain: Crystal Tobias

Absent: Lynne Bailey, Claudia Cummings, Pat Flynn, Lisa Horton, Barbara Leary, Brian Murch, Edward Roza, Devin Swartwood, Srinivas Yanaparti

INFORMATION ITEMS

1. Environmental Constraints Technical Memorandum – included with agenda packet.
2. Orangevale Notification – postcards distributed first week of December.
3. Social Pinpoint Interactive Mapping Tool – link to mapping activity/questionnaire is available on the River District Master Plan webpage at www.folsom.ca.us/riverdistrict.
4. CAC Meeting Notes from October 25, 2023 meeting – included with agenda packet.

CAC WORK GROUP ACTIVITY/DISCUSSION

1. Opportunity and Constraints – Interactive discussion and identification of potential district assets, areas of unique opportunities to meet the intent of the General Plan, as well as district elements such as hazards, cultural and environmental resources that represent project constraints or opportunities for protection and enhancement.
 - a. **River District Central Subarea Group Discussion** – 75 min
 - i. General comment/question from committee member relative to whether it is appropriate for the CAC to consider the “Wye Property” and the “Natoma Ground Sluice Diggings” within the boundary and planning area of the River District Master Plan.
 - ii. Group report back on priority Opportunities and key Constraints – 25 min
 1. Group 1
 - Connections/trails
 - Better connections from BMB recreation to HD retail areas
 - Improve ADA access in area below Lake Natoma Inn and toward Corp Yard, vegetation management a concern
 - Incorporate Folsom Powerhouse Interpretive Center
 - More interpretive signage outside, interpretive connection – the best way to “feel” the river
 - Leidesdorff Parking Lot at Trader’s Lane
 - Create better connection to bring people down from main area on Sutter St to retail/shops on Leidesdorff St
 2. Group 2
 - Improve trail connections between Folsom Blvd to Rainbow bridge to Canal Trail
 - Trail along waterfront all the way through
 - Trail behind Natoma Inn can improve
 - Improve connection from Johnny Cash Trail to Rainbow Bridge (Scott St/Riley St)...”Walk to the River”
 - Wider, safer, more inviting
 - Currently too much traffic congestion due to design

- Directional signage for trails from Historic District
 - Black Miners Bar
 - Urban Park ideas to bring people in similar to Golden Gate Park
 - Visitors center, culturally significant areas
 - FOLFAN working with State Parks on a native plant nursery
3. Group 3
- East of Rainbow Bridge along Johnny Cash Trail (concrete canal section)
 - Currently underutilized by public
 - Add picnic tables/benches/overlook to bring people in
 - Remove non-native, invasive species
 - Park infrastructure
 - Better wayfinding, safety, connection, and visibility of lake
 - Clean up between bridges
 - Remove non-native, invasive species (esp. European Blackberry)
 - City infrastructure
 - Improve parking, additional restrooms, traffic at Riley/Scott (round-a-bout?)
 - Better access/connection from Historic District to the water/trails
 - Create pedestrian/bike crossing in area of Scott St.
4. Group 4
- Create new dock area for paddle craft at Leidesdorff/Gold Lakes Dr.
 - Below Folsom Bridge/behind Lake Natoma Inn
 - Boat house on south shore at “lagoon area”
 - Use inlet across from Black Miner’s Bar
 - Create bicycle lot/secure parking area
 - Corner lot at Leidesdorff/Gold Lake Dr, 902 Leidesdorff St (Baker/City corner property) – secure parking for weekends, festivals, etc.

NEXT MEETING DATE – January 10, 2024

ADJOURNMENT – 8:40 pm

NOTICE: Members of the public are entitled to directly address the Committee concerning any item that is described in the notice of this meeting, before or during consideration of that item. If you wish to address the Committee on an issue which is on this agenda, please complete a blue/green speaker request card, and deliver it to a staff member prior to discussion of the item. When your name is called, stand to be recognized by the Chair and then proceed to the podium. If you wish to address the Committee on any other item of interest to the public, when the Chair asks if there is any “Business from the Floor,” follow the same procedure described above. Please limit your comments to three minutes or less.

In compliance with the Americans with Disabilities Act, if you are a person with a disability and you need a disability-related modification or accommodation to participate in this meeting, please contact the City Manager’s Office at (916) 461-6010, or mkasama@folsom.ca.us. Requests must be made as early as possible and at least two full business days before the start of the meeting.

Any documents produced by the City and distributed to the Committee regarding any item on this agenda will be made available at the City Clerk’s Counter at City Hall located at 50 Natoma Street, Folsom, California during normal business hours.