

Rail Modernization 15-Minute Service to Folsom

Project Overview
January 9, 2024

INTRODUCTION

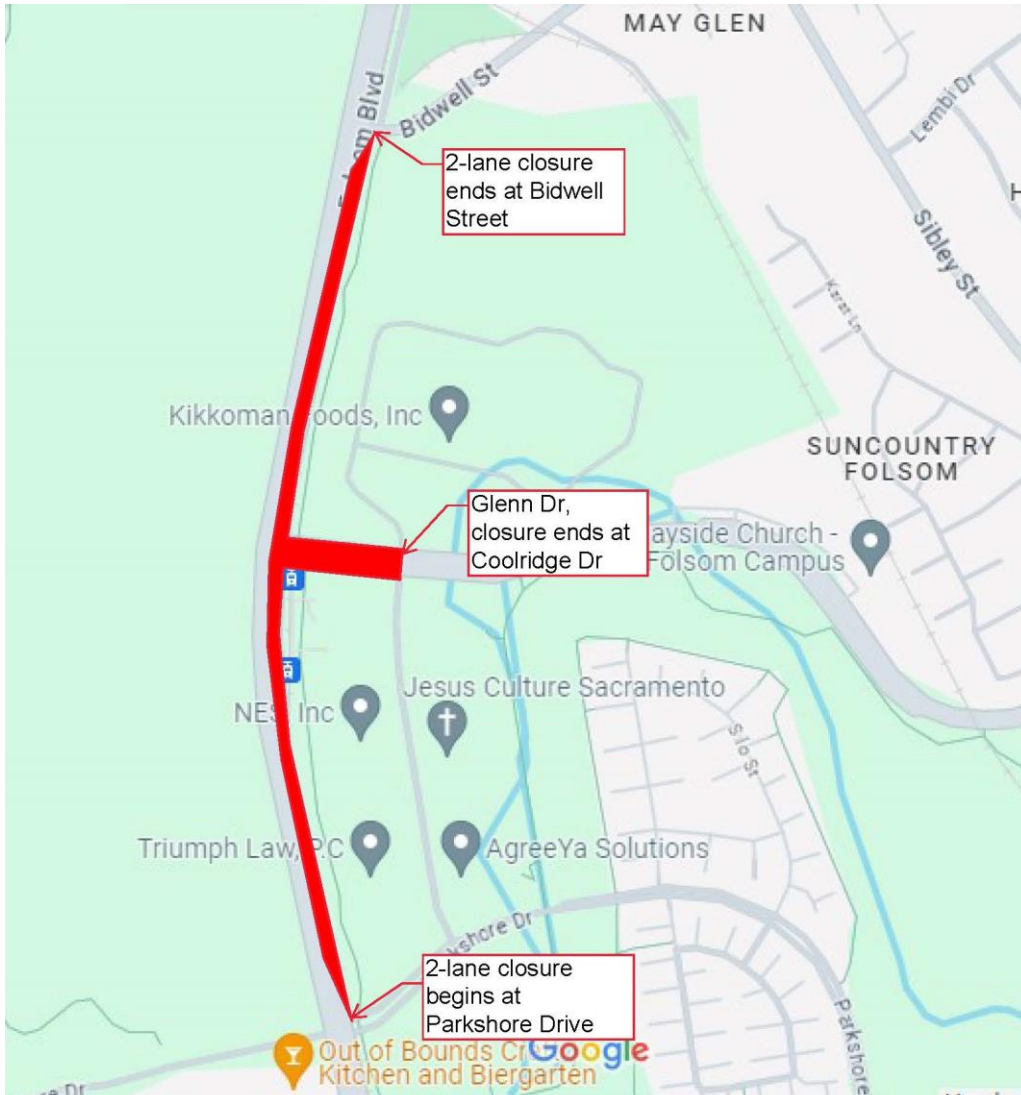
- 15 Minute Service to Folsom is part of the Rail Modernization Project
- Provides a Passing Track (double track) between Parkshore Drive and Bidwell Street
- Increases the service frequency from 30 minutes to 15 minutes
- There will be a new inbound platform at Glenn/Robert G Holderness Station

PROJECT SCHEDULE

- Project start date – 5/2/2022
- Move end of line to Iron Point – 1/2/2024
 - Start date of track construction – 1/2/2024
 - Bus bridge provided from Iron Point to Historic Folsom
- Completion date of construction – late summer 2024 depending on weather.
 - Begin 15-minute service to Historic Folsom

Traffic Control During Construction (estimated 6.5 Months)

- Traffic Control Plan has been approved by the City of Folsom
- 2 lanes of Folsom Blvd from Parkshore Drive to Bidwell Street will be closed
- Glenn Drive will be closed from Folsom Blvd to Coolidge Drive
- Portions of the Park and Ride parking lot is fenced for the contractor's use

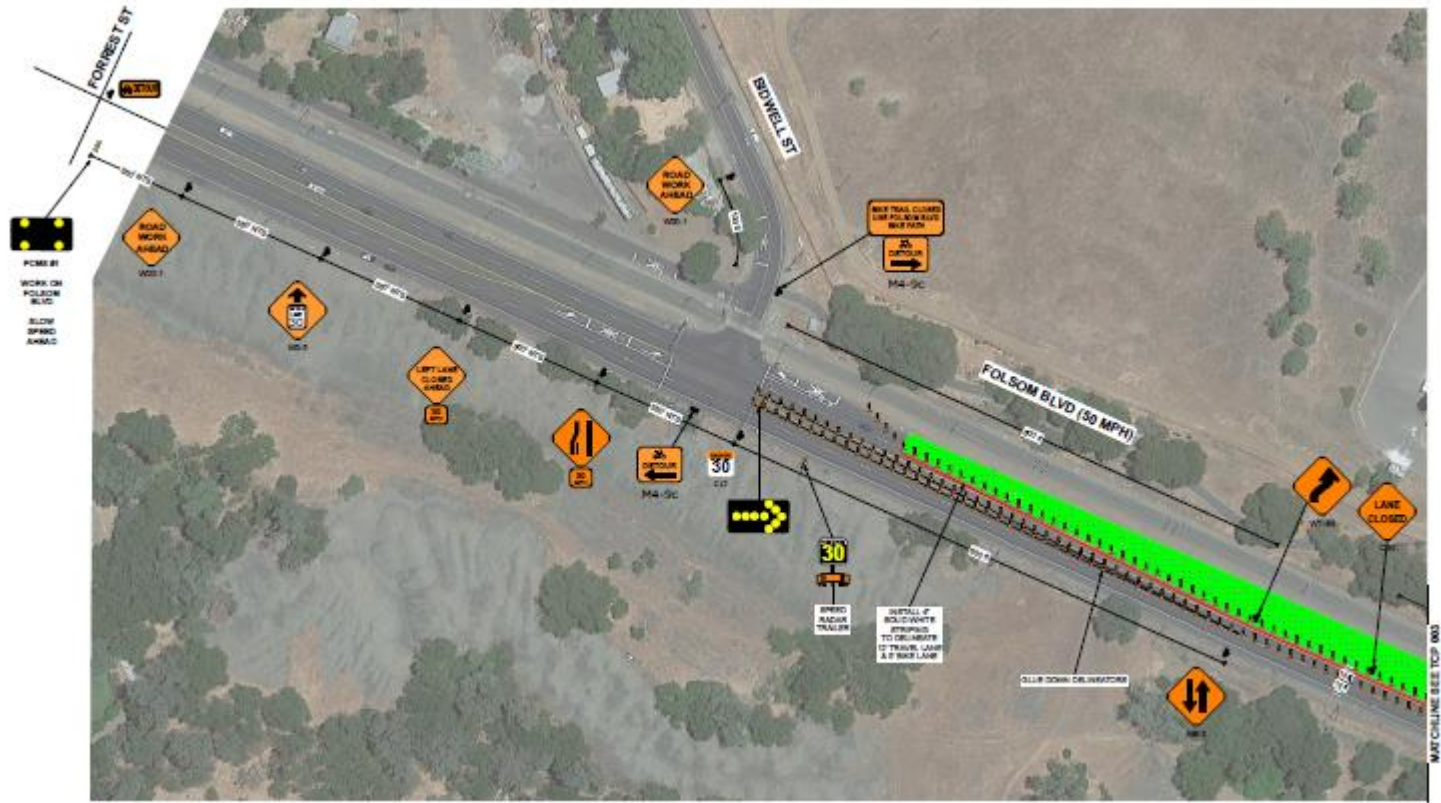


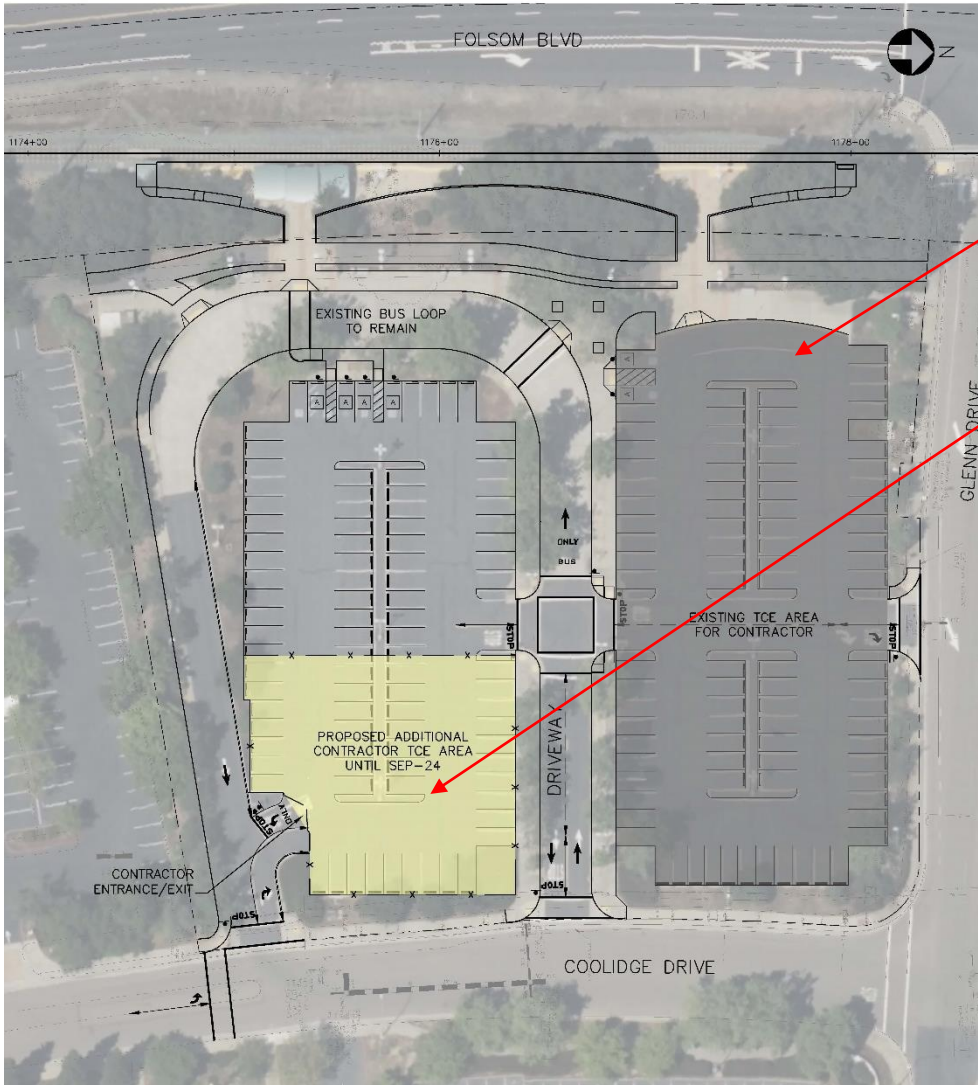
- Lane Closure Limits
 - 2 lanes of Folsom Blvd will be closed during construction.
 - 2 lanes will remain open for traffic, one in each direction
 - Glenn Drive will be closed from Folsom Blvd to Coolidge Drive

Questions?









- Contractor's TCE Area

- Northside of the Park and Ride parking lot is already fenced for the contractor's use
- Half of the Southside of the Park and Ride parking lot will be fenced for the contractor's use at the start of the 6.5 months shutdown
- Upper half of Southside will be open for public use and Bus Bridge lane will remain open