



CITY OF
FOLSOM
DISTINCTIVE BY NATURE

Meeting No.6

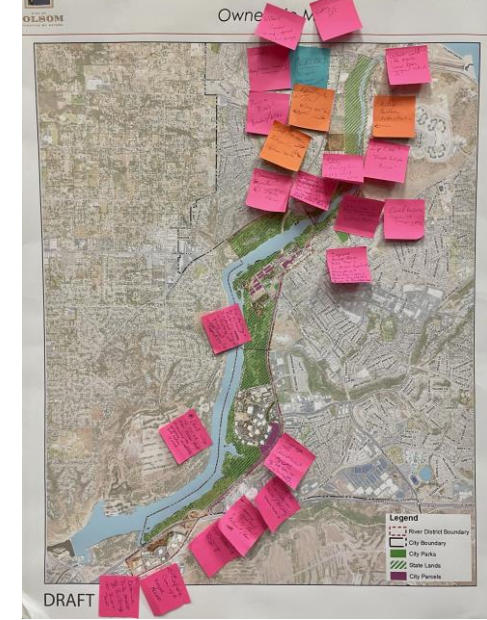
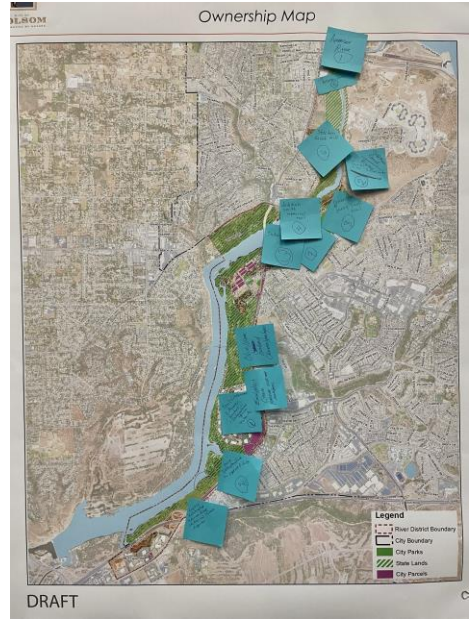
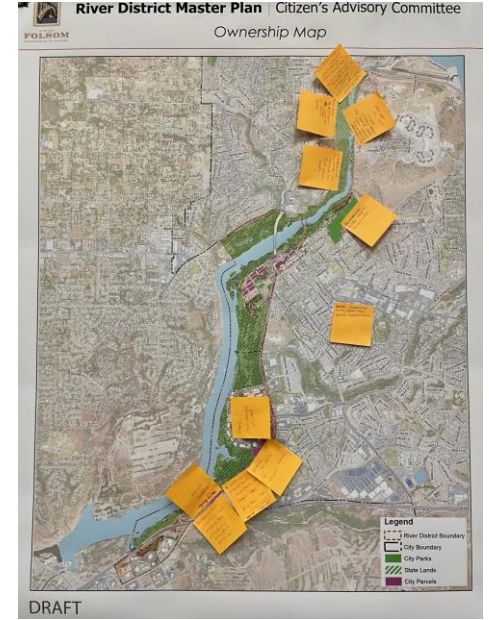
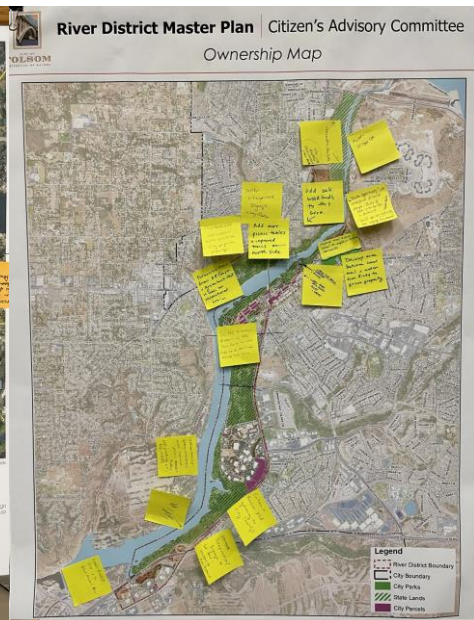
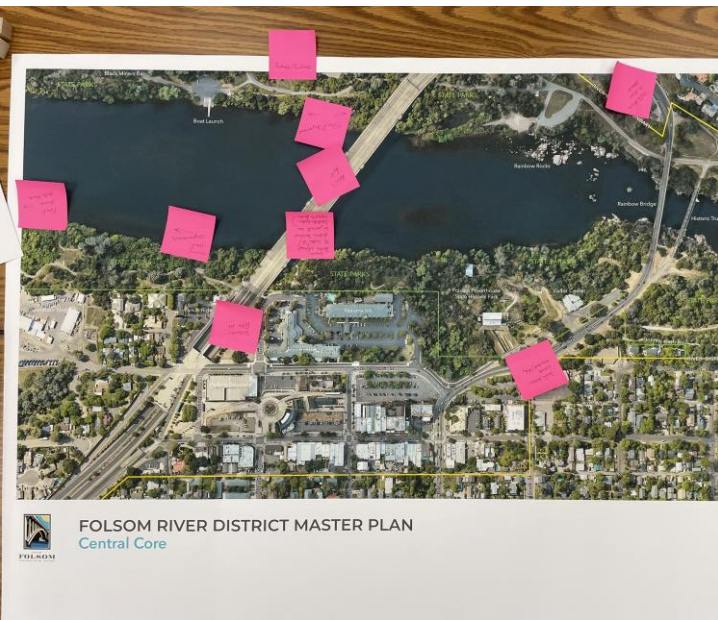
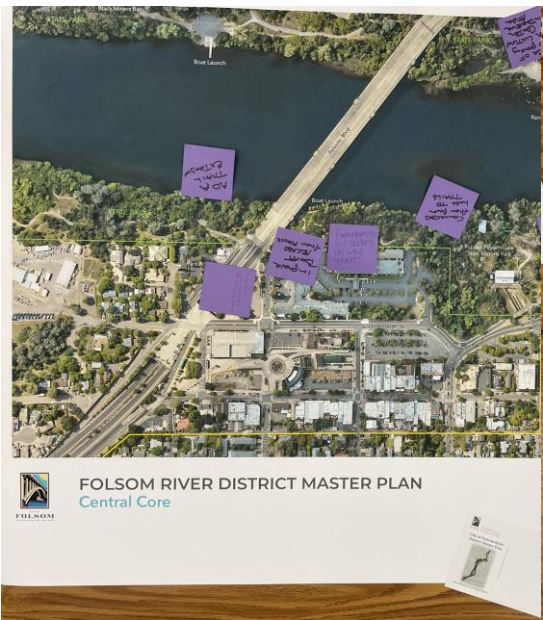
Citizen's Advisory Committee



CITY OF
FOLSOM
DISTINCTIVE BY NATURE

Opportunities and Constraints

Synthesis of Previous Committee Work



Consolidated Comments from Breakout Groups

North	Central	South
<ul style="list-style-type: none"> • Trails <ul style="list-style-type: none"> • Extend on both sides • Close gaps • Footbridge across river to close create loop • Observational overlooks • Interpretive Signage (Native American, Powerhouse, nature, historical markers, etc.) • Revitalize rodeo amphitheater for more flexible use • Improve wayfinding • Development opportunity south of Inwood Drive • Kayak/canoe landing area upriver • Benches and picnic tables 	<ul style="list-style-type: none"> • Trails <ul style="list-style-type: none"> • Waterfront connection from Truss Bridge to Folsom Blvd or beyond • Better connection from Johnny Cash Trail to Rainbow Bridge • Safer connection from Historic District to river • Improve ADA access from Historic District to river • Benches/tables/overlook next to Truss Bridge • Improve Wayfinding • Manage vegetation to open up views • Incorporate the Powerhouse area better • Stronger connection to Black Miners Bar • New dock for paddlers below Lake Natoma Inn • Boat house at "lagoon area" across from BMB • Secure bike parking area at Baker/City property • Better connection between Sutter and Leidesdorff • Improve circulation around Riley/Scott/Leidesdorff intersections 	<ul style="list-style-type: none"> • Trails <ul style="list-style-type: none"> • Improve access from Folsom Blvd • Enhance accessibility for all users • Observational overlooks • Restrooms • Benches and picnic tables • Connection under Hwy 50 • Elevated canopy walk • Interpretive Signage (Willow Creek, historic orchards/groves, etc.) • Improve wayfinding (restaurants, outlets, light rail, river, etc.) • Hotel/Conference Center (Parkshore area) • Visitor Center (Museum Flat) • Clean up Alder Creek Pond, develop water access • Concessions at Willow Creek (paddling rentals, food trucks, etc) • Enhance District Gateway at Folsom Blvd



State Parks Welcome/Visitor Center at Nimbus

Mississippi Bar

Water trail loop in Lake Natoma lagoons

Enhance gateway to District (sense of arrival)

Trail, parking, and amenity improvements at Willow Creek

Clean up Alder Creek Pond and provide water access

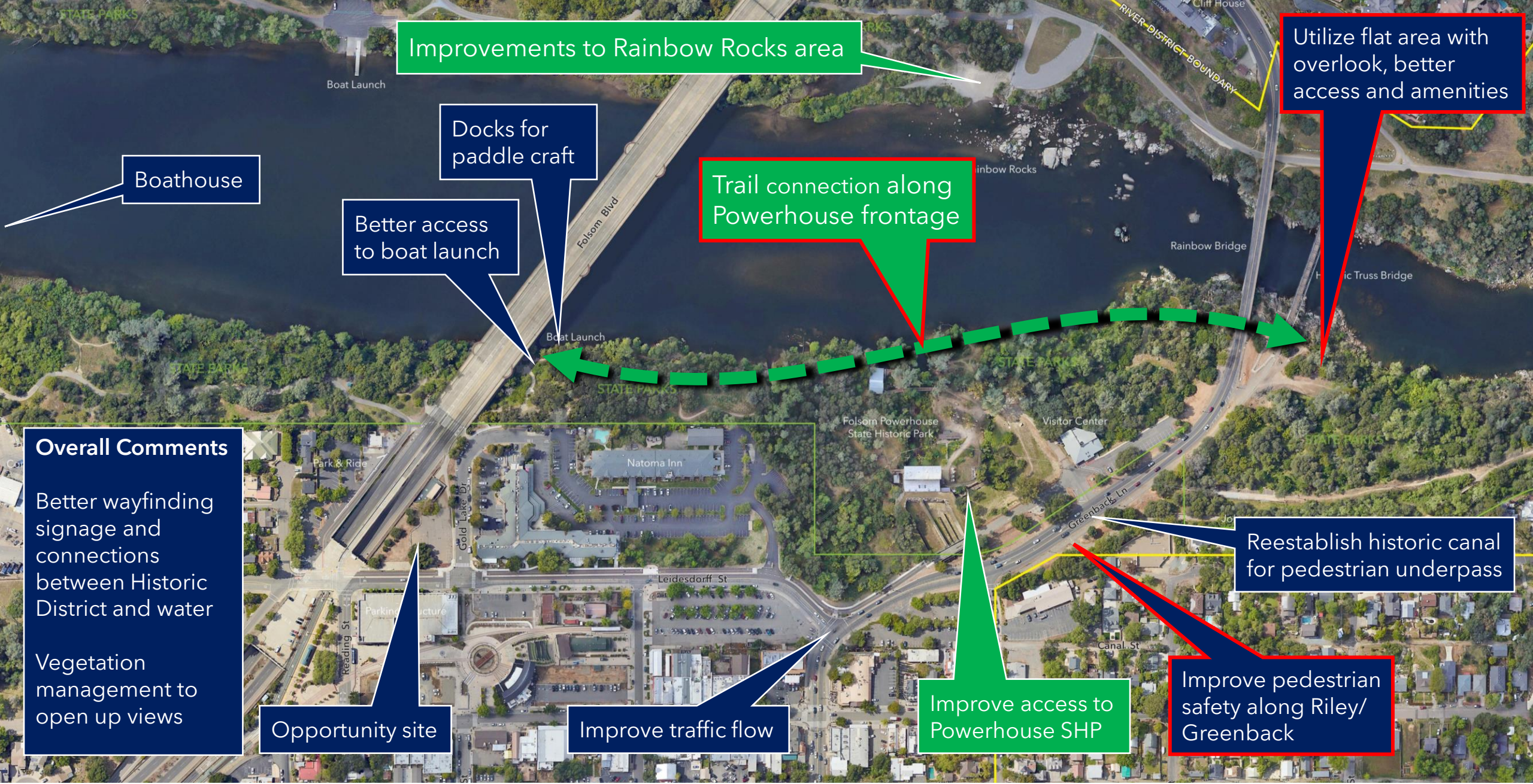
Overall Comments
Interpretation
• Indigenous peoples
• Chinese heritage
• Nature
Trails
• Better access to water
• Benches & picnic tables
• Better wayfinding

Pedestrian connection across Hwy 50

State Parks Welcome/Visitor Center

Wayfinding signage to adjacent services

Hotel/Conference Center



Improvements to Rainbow Rocks area

Utilize flat area with overlook, better access and amenities

Trail connection along Powerhouse frontage

Docks for paddle craft

Better access to boat launch

Boathouse

Overall Comments

Better wayfinding signage and connections between Historic District and water

Vegetation management to open up views

Reestablish historic canal for pedestrian underpass

Improve pedestrian safety along Riley/Greenback

Improve access to Powerhouse SHP

Improve traffic flow

Opportunity site



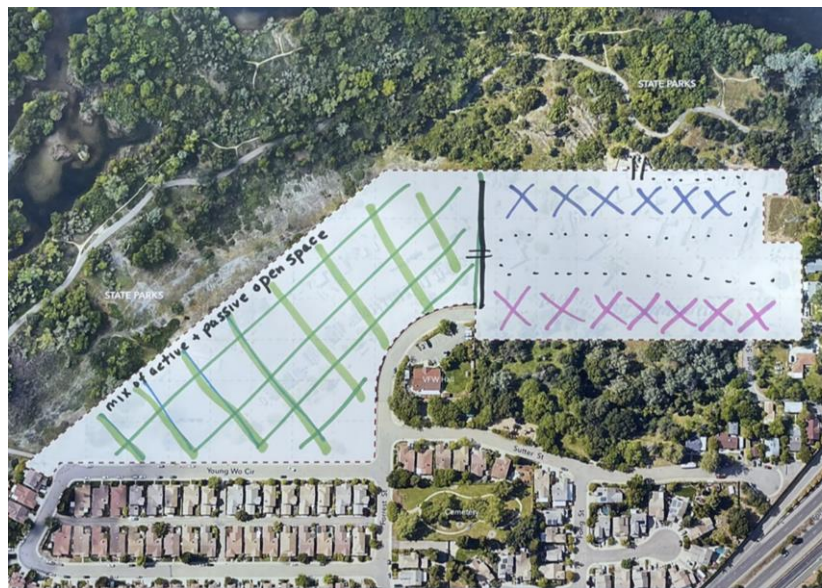
CITY OF
FOLSOM
DISTINCTIVE BY NATURE

Corporation Yard

Conceptual Land Use Visioning

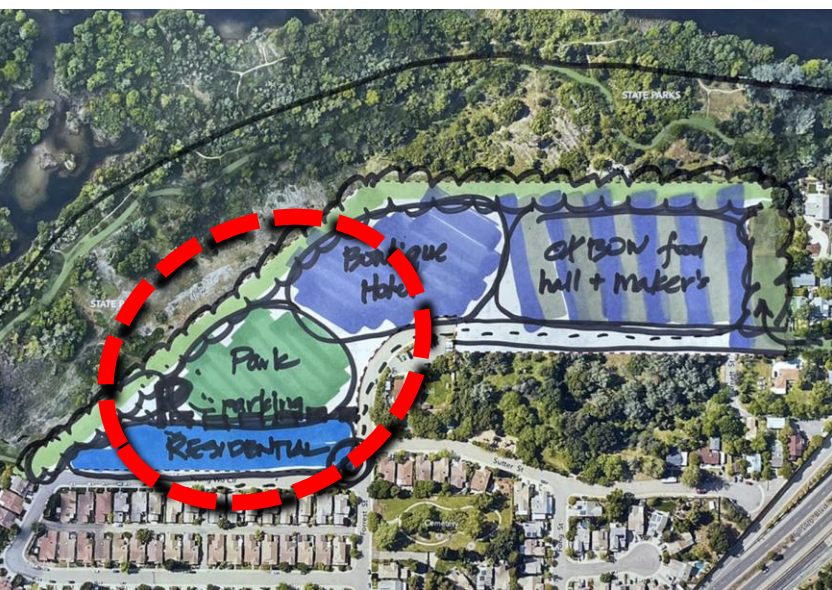


Six Concepts with a lot in common



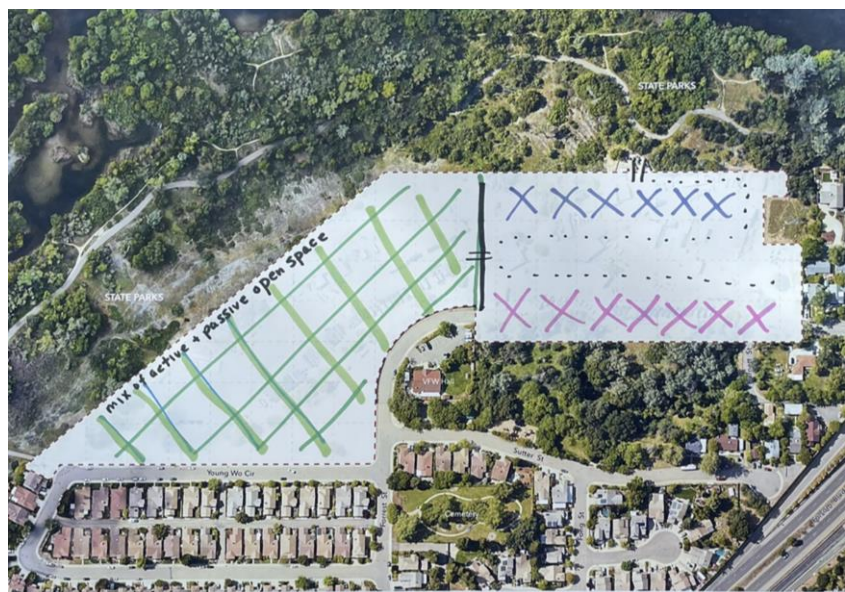
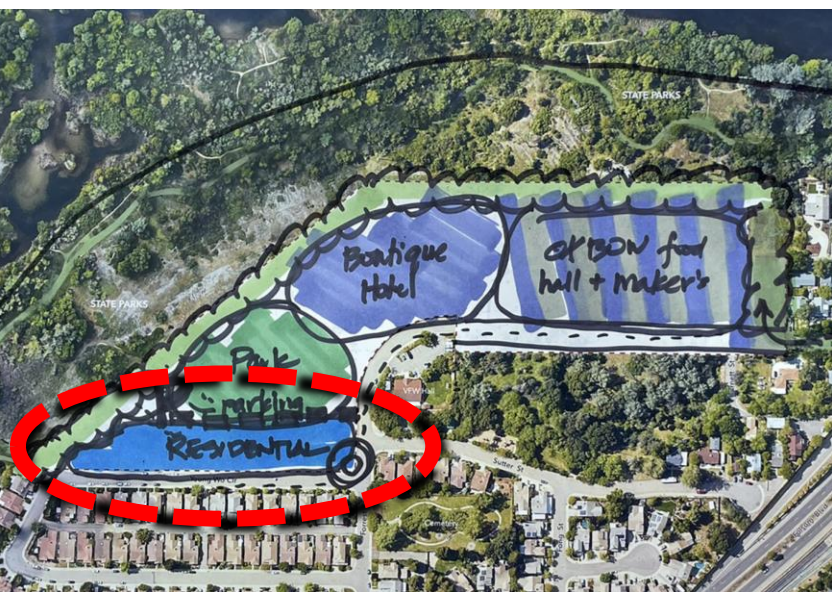


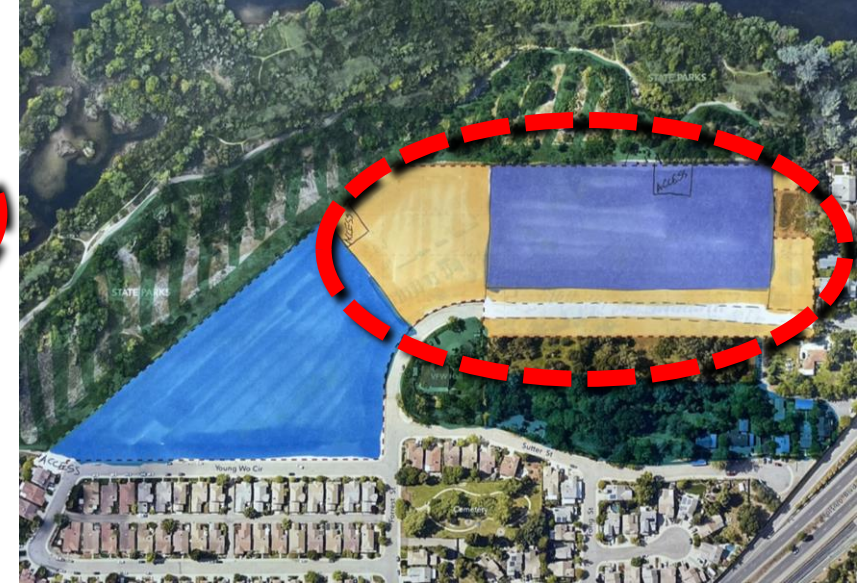
Parkland / Open Space



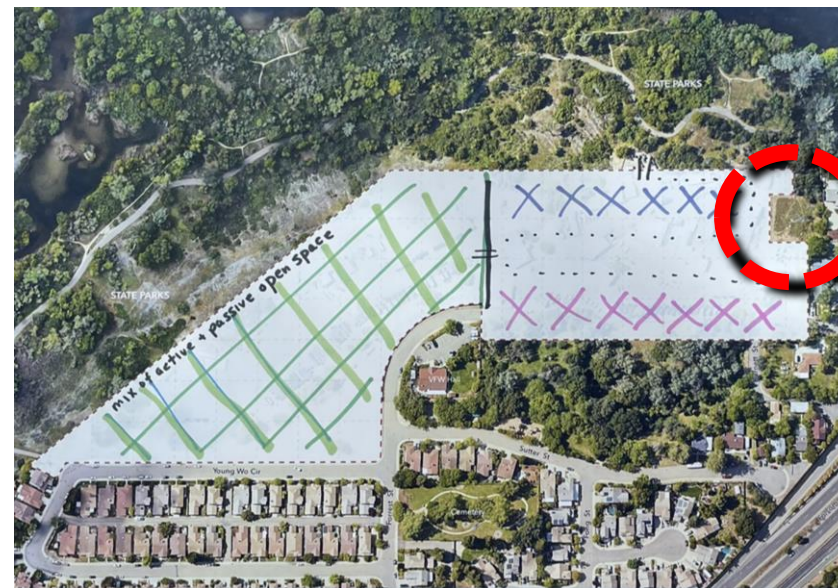


Residential



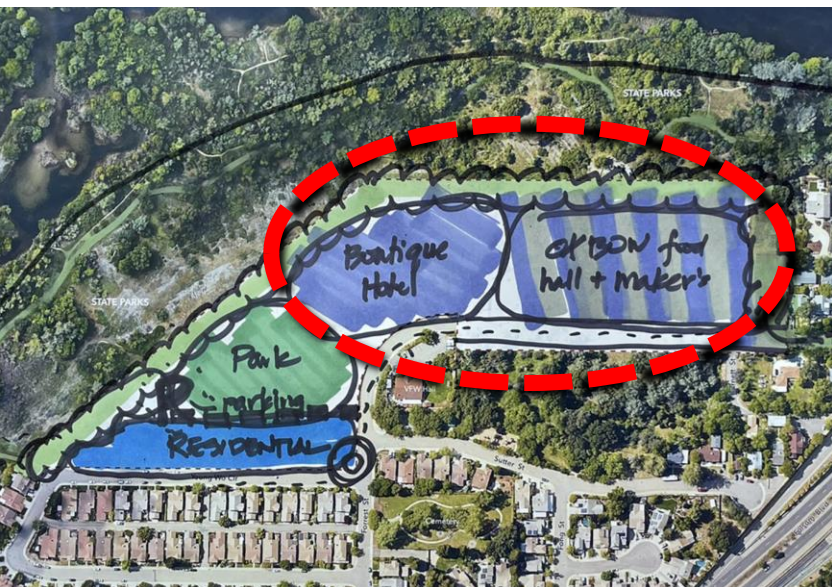


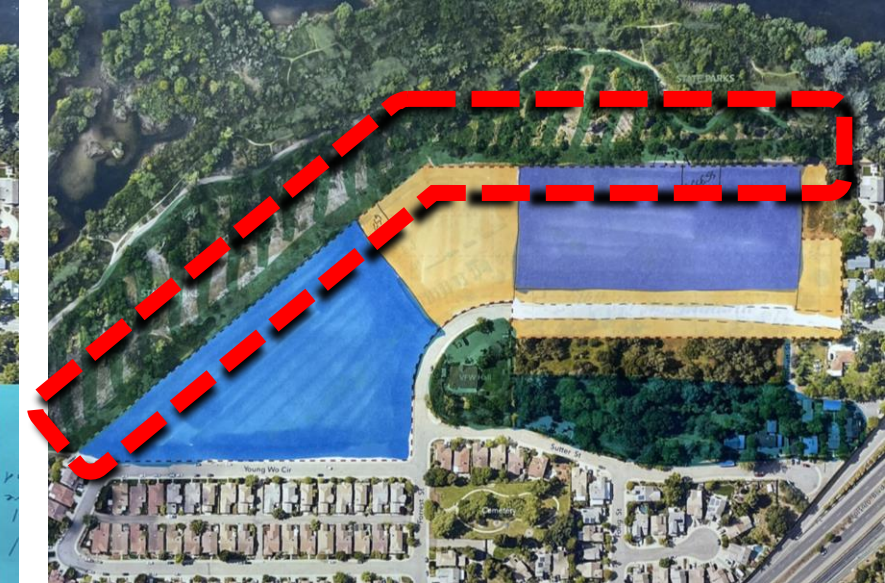
Mixed Use





Commercial / Visitor Serving





Green Edge





CITY OF
FOLSOM
DISTINCTIVE BY NATURE

Corporation Yard

Land Use Concept Refinement

Residential



Single Family



Medium Density



Medium Density



Single Family



Multi-Family



Senior Housing

Mixed Use



Residential + Commercial



Residential + Commercial



Residential + Commercial



Residential + Commercial



Residential + Commercial



Residential + Commercial

Entertainment



Destination Space



Casual Activities



Music



Social Gathering Spaces



Indoor Venue



Outdoor Theater

Commercial & Visitor Serving



Accommodation



Museum



Dining/Shopping



Work Share Space



Private Events



Lakeview Dining

Open Space, Passive Recreation



Accessible Trails



Nature Habitat



Accessible Trails



Overlooks



River Promenade



Boardwalk

Open Space, Active Park



Picnicking



Playgrounds



Community Park



Community Park



Flexible Use



Exercise

Industrial



Food & Beverage Production



Maker Space



Light Manufacturing



Artist Studios



Food & Beverage Production

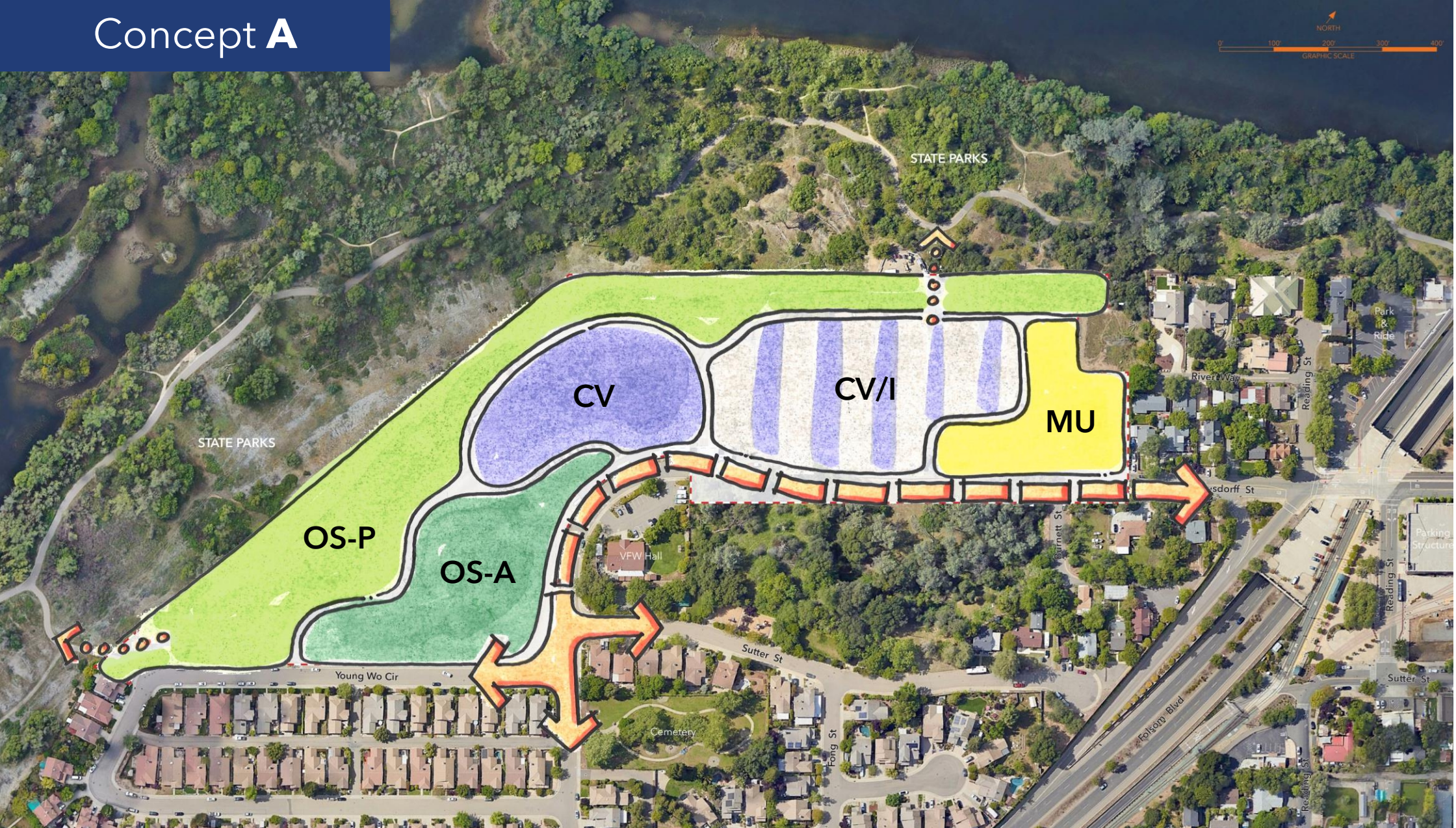


Light Industrial



CITY OF FOLSOM
DISTINCTIVE BY NATURE

Concept A



CITY OF
FOLSOM
DISTINCTIVE BY NATURE

Concept A

- Interpret Black Miners Town

- Boutique Hotel
- Visitor Center
- Museum

- Accessible promenade



CITY OF
FOLSOM
DISTINCTIVE BY NATURE

STATE PARKS

STATE PARKS

OS-P

OS-A

CV

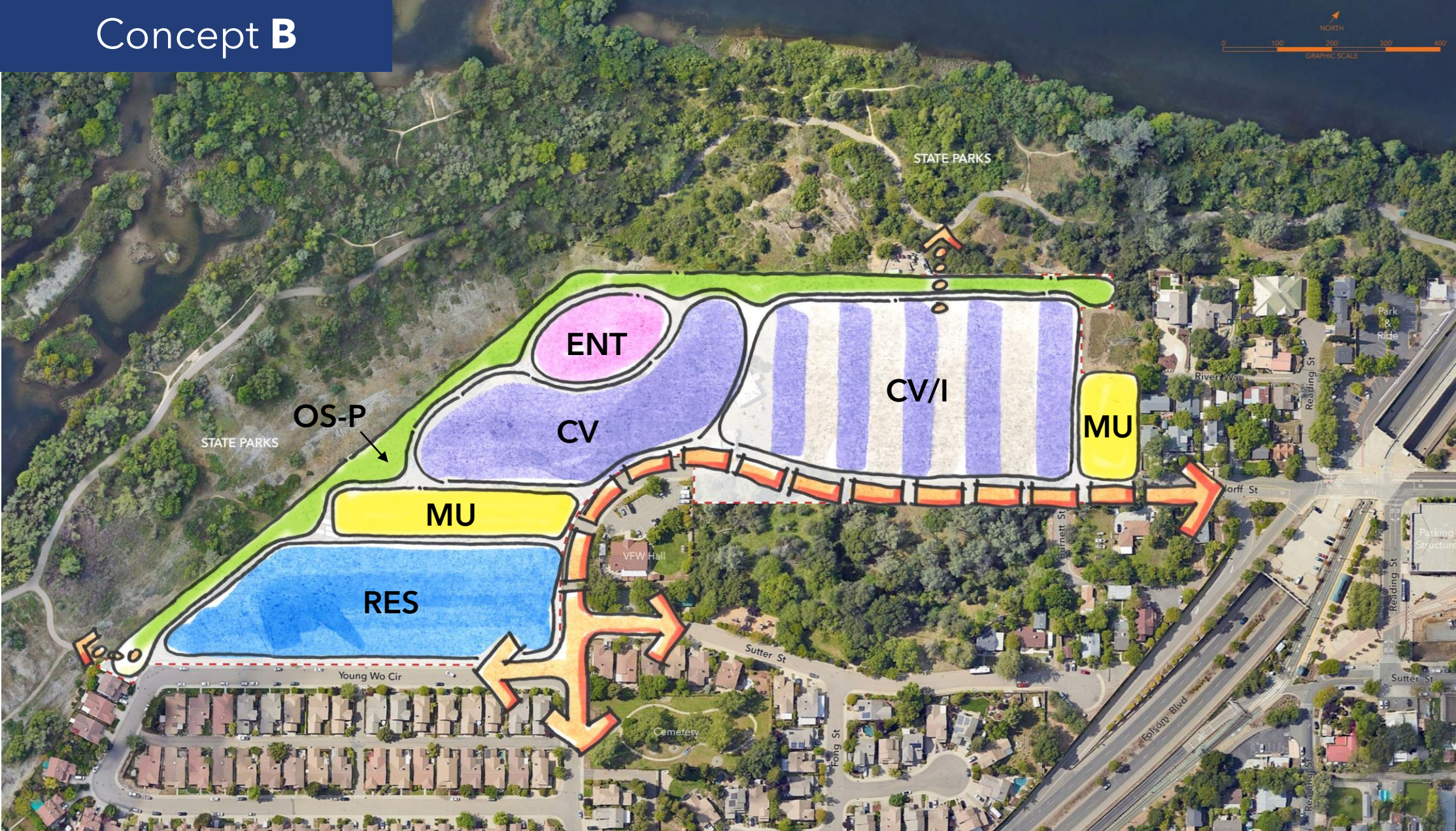
CV/I

MU

- Blend of active and passive uses

- Public Market (e.g. Oxbow)
- Restaurants/Cafes
- Hotel
- Conference/Retreat Center

Concept B



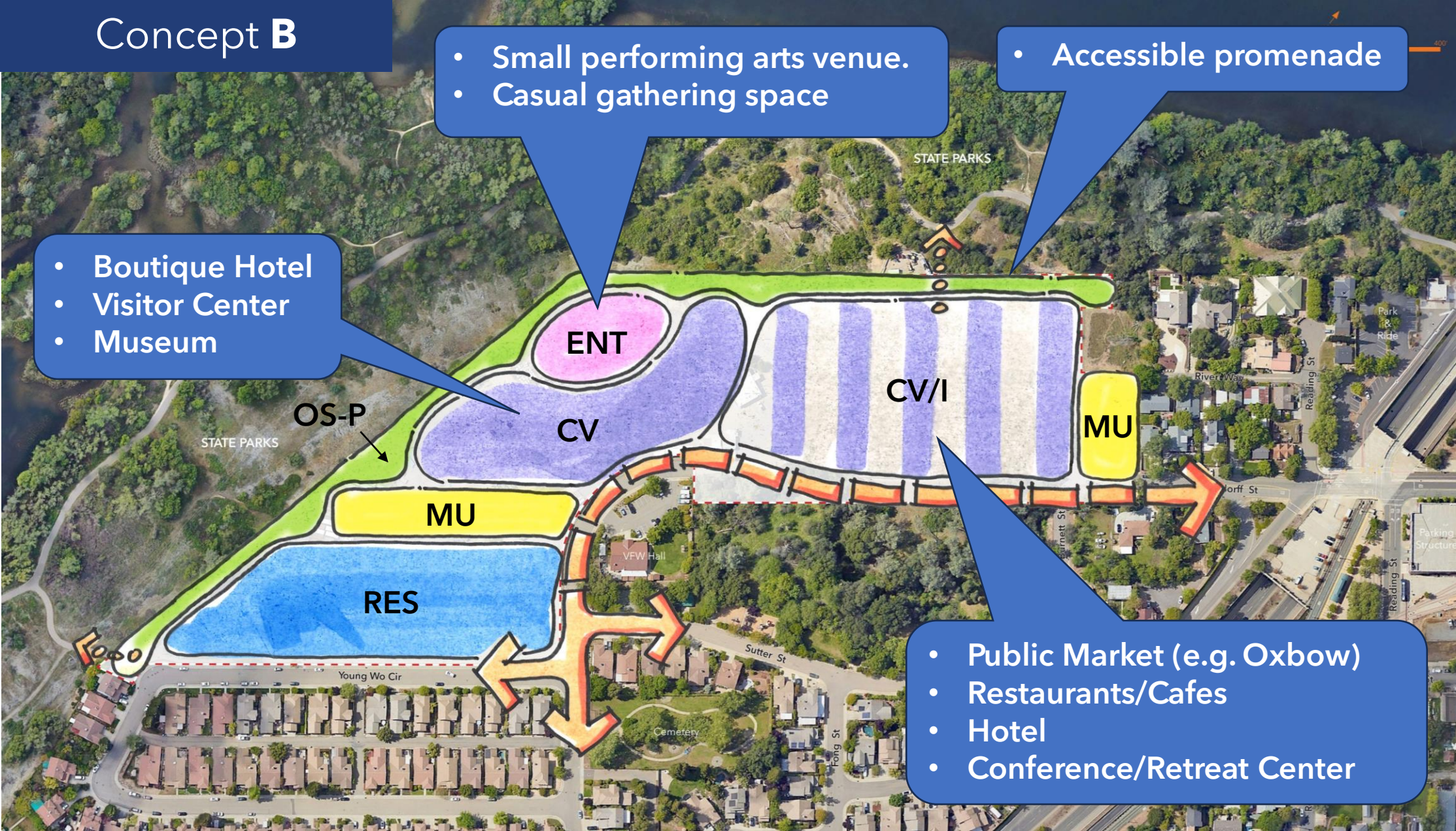
CITY OF
FOLSOM
DISTINCTIVE BY NATURE

Concept B

- Small performing arts venue.
- Casual gathering space

- Accessible promenade

- Boutique Hotel
- Visitor Center
- Museum



- Public Market (e.g. Oxbow)
- Restaurants/Cafes
- Hotel
- Conference/Retreat Center



CITY OF
FOLSOM
DISTINCTIVE BY NATURE



Concept C

Biophilic Water Museum Park

• Forest Playground

• Diorama of State of California

CV

CV

OS-P

OS-P

- Waterarium
- Water Library
- World Water Exhibition
- Jet Stream Ride-Along



CITY OF FOLSOM
DISTINCTIVE BY NATURE



CITY OF
FOLSOM
DISTINCTIVE BY NATURE

Concept A



- 2
- 1.5
- 6
- 2.5
- 3.5

Concept B



- 3
- 2
- 1
- 2
- 3
- 4.5

Concept C



- 8.5
- 7