

An aerial photograph of a river district. The river flows through the center, with several bridges crossing it. The surrounding area is densely packed with buildings, mostly multi-story structures, and is interspersed with trees showing autumn foliage in shades of yellow, orange, and green. The sky is clear and bright, suggesting a sunny day.

River District Master Plan Joint Commission Workshop

**Planning Commission
Historic District Commission
Parks & Recreation Commission**

July 30, 2024



CITY OF
FOLSOM
DISTINCTIVE BY NATURE

Background / Purpose

From the General Plan:

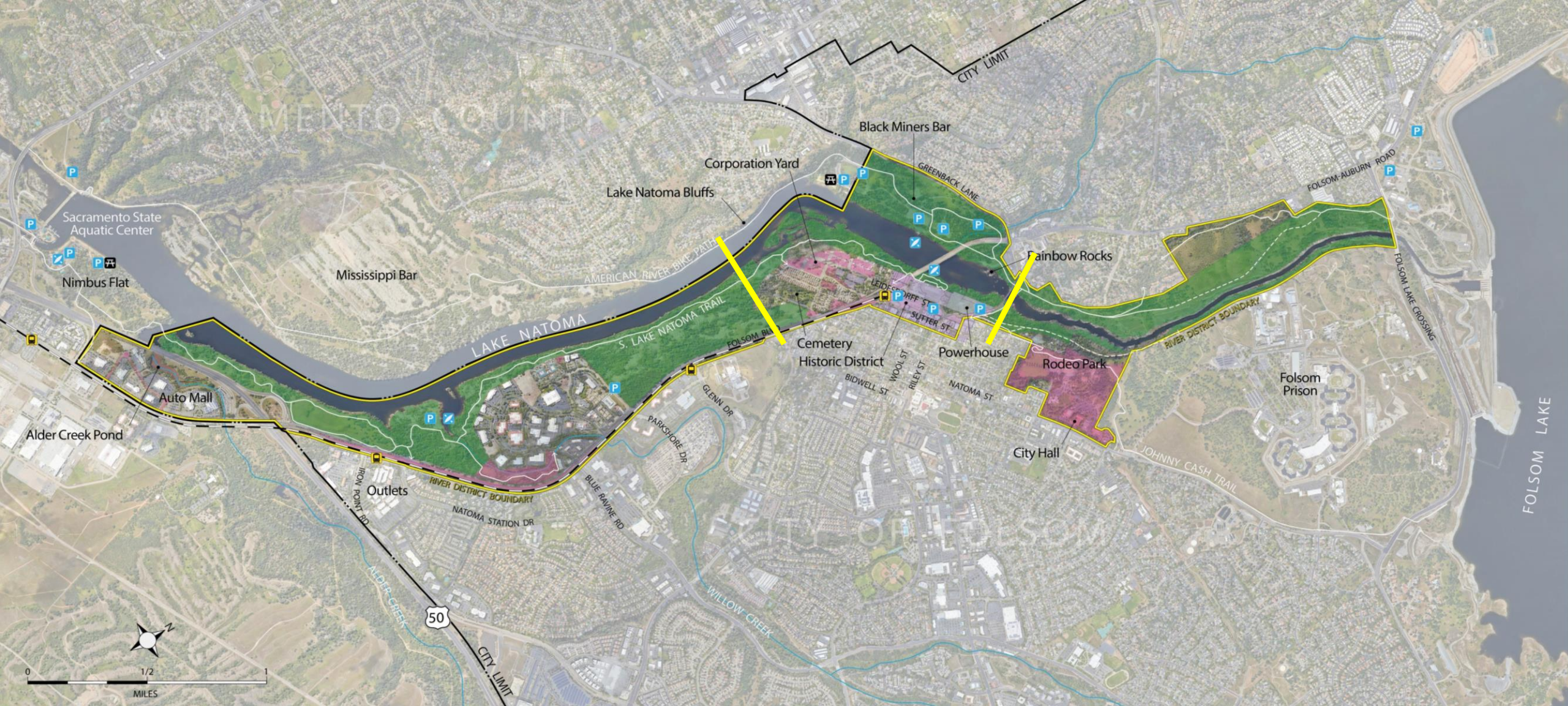
- **Increase public access**
- **Increase recreation opportunities**
- **Increase economic development**
- Provide city gateway enhancements
- Commit to high quality design
- Enhance Folsom's heritage
- Celebrate and protect our environmental, cultural and historical resources











CITY OF
FOLSOM
DISTINCTIVE BY NATURE

Discussion Outline

- District Description
- Community Engagement
- Summary of Priorities
- City Corporation Yard
- Key Sites
 - River Promenade
 - Northern Reach Loop Trail & Bridge
 - Rodeo Park
 - Traders Lane
- Pedestrian Circulation & Connections



-  Light Rail/Station
-  Boat Launch
-  City-Owned Property
-  Public Parking (City or State)
-  Picnic Area
-  Historic District
-  Trails (paved/unpaved)
-  State of California

RIVER DISTRICT MASTER PLAN

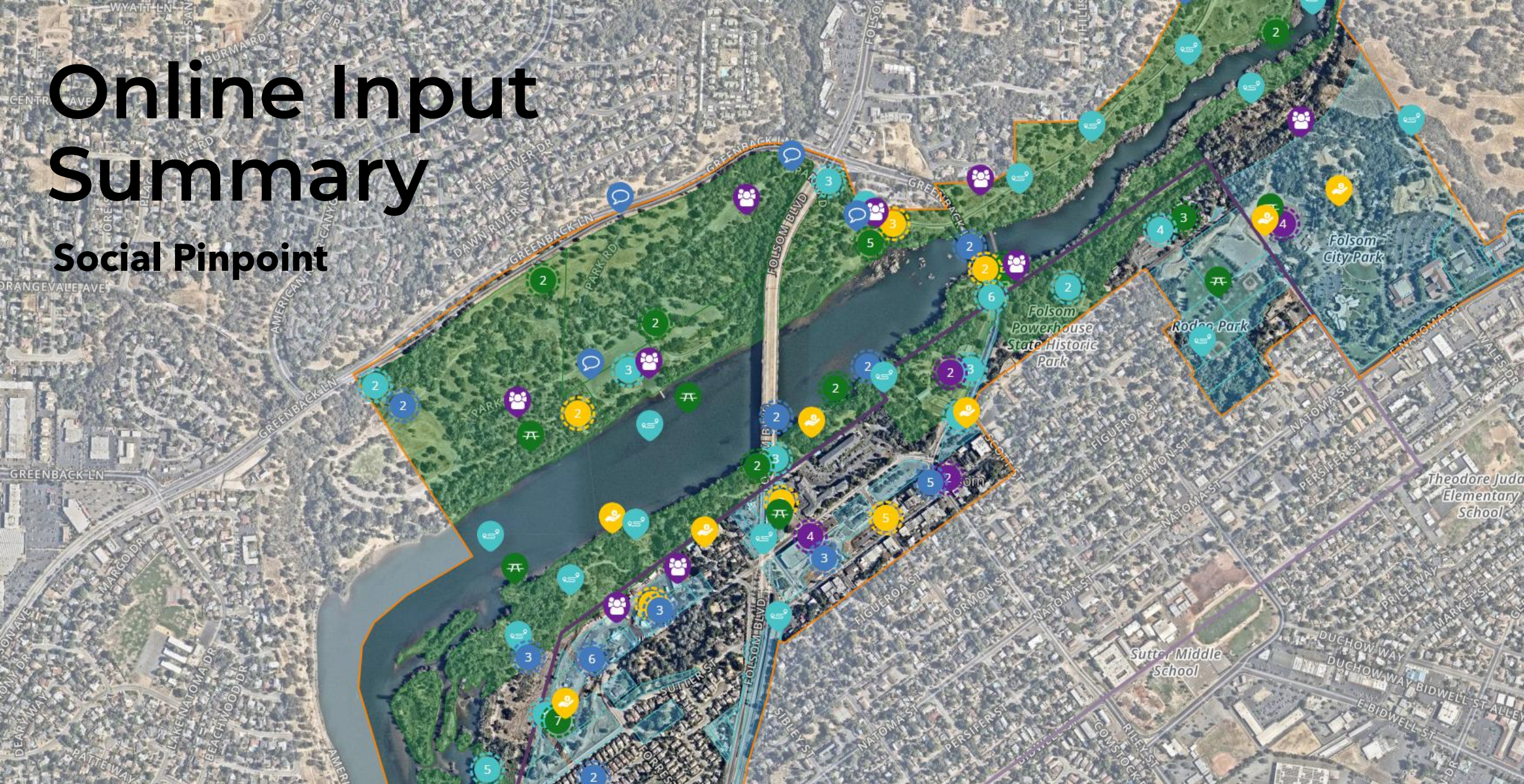


Community Engagement

- Social Pinpoint website active: **8** weeks
- Individual participants: **300**
- Comments on map: **526**
- Questionnaire responses: **165**
- Constant Contact List: **180+**
- Citizens Advisory Committee: **24** members
- Citizen Advisory Committee: **14** mtgs (12 to date)
- Community Open House, June 6, 2024

Online Input Summary

Social Pinpoint

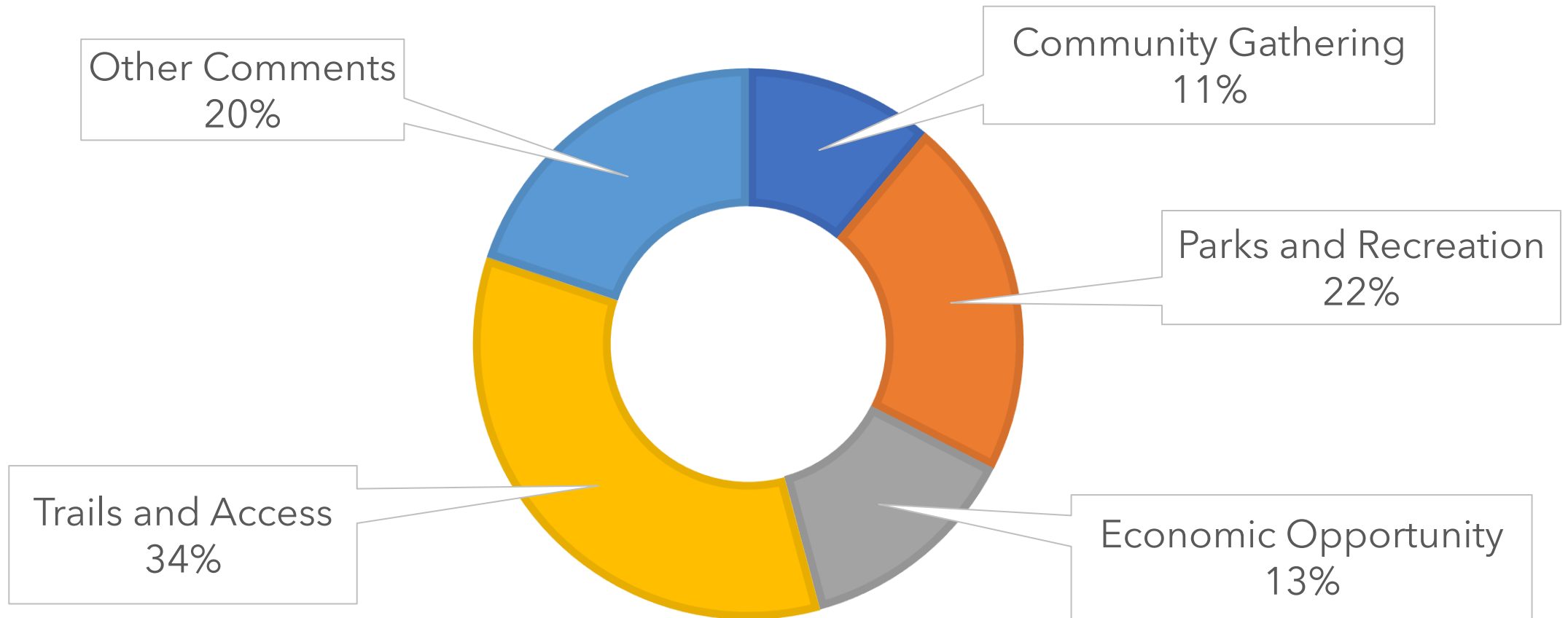


Social Pinpoint Statistics

Distribution of Map Comments by Topic



CITY OF
FOLSOM
DISTINCTIVE BY NATURE

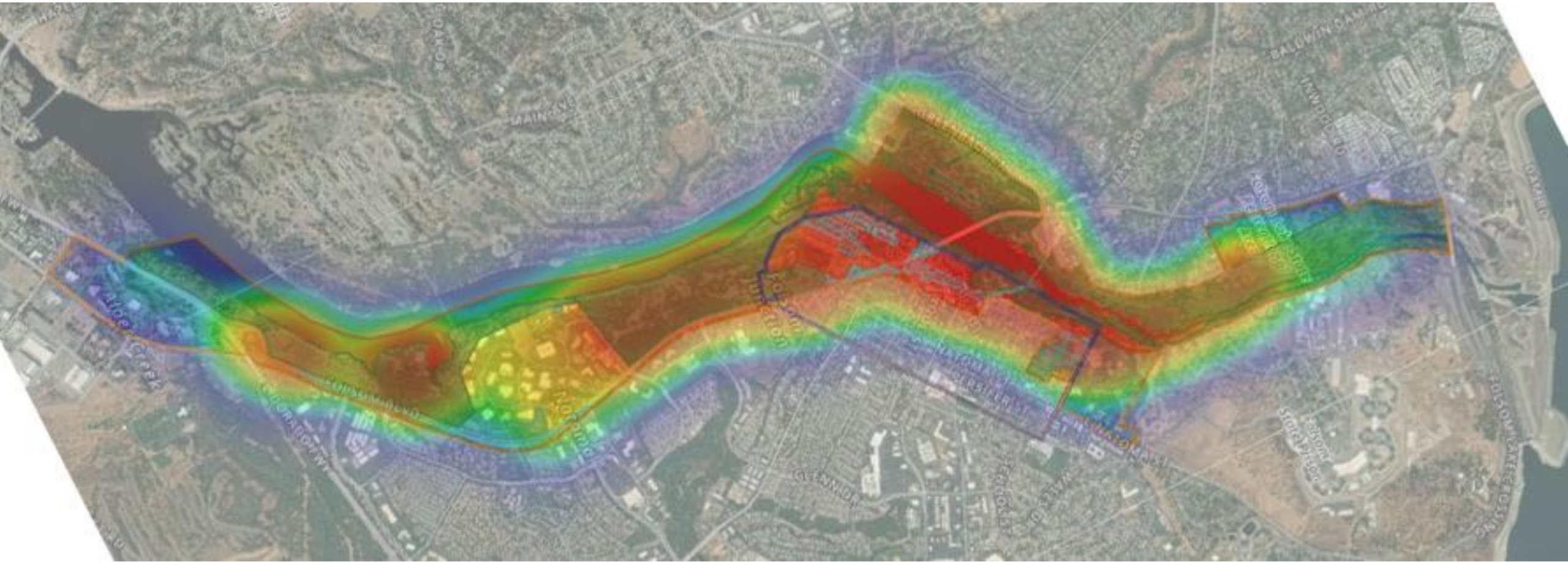


Social Pinpoint Distribution

"Heat" Map Comments by Location



CITY OF
FOLSOM
DISTINCTIVE BY NATURE

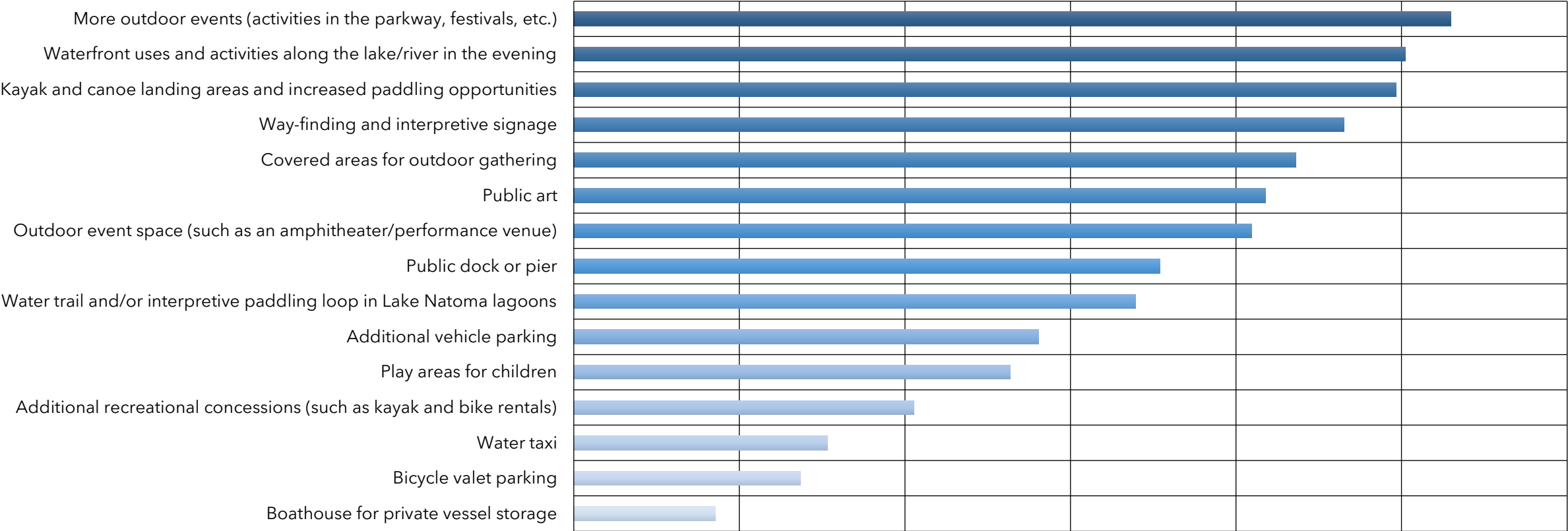


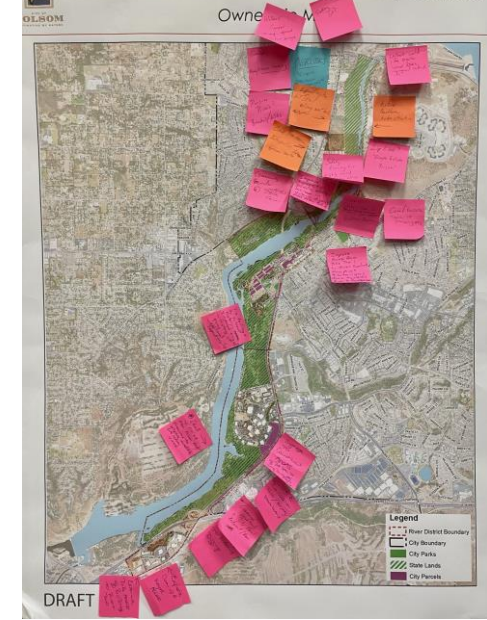
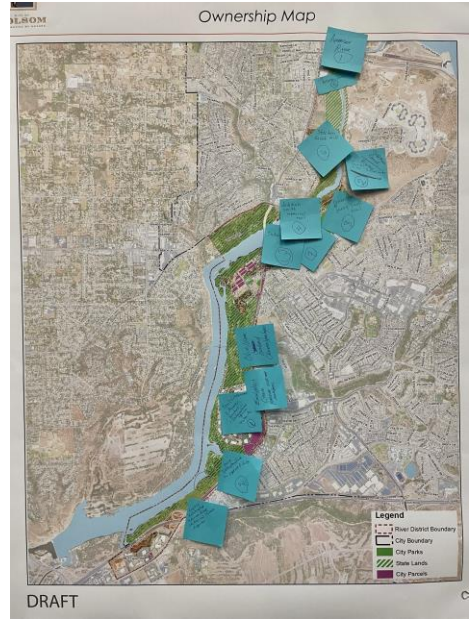
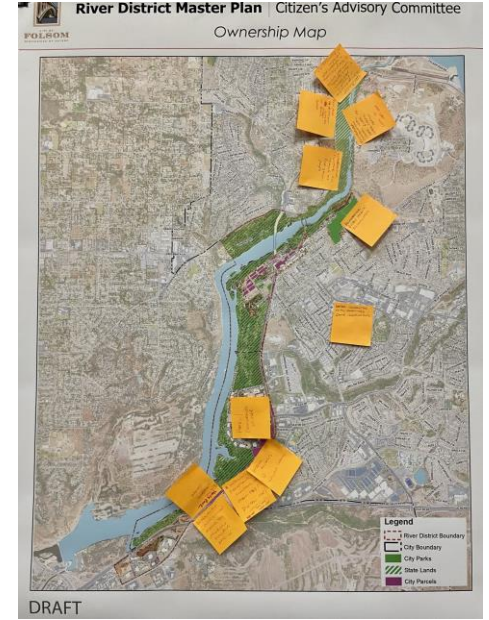
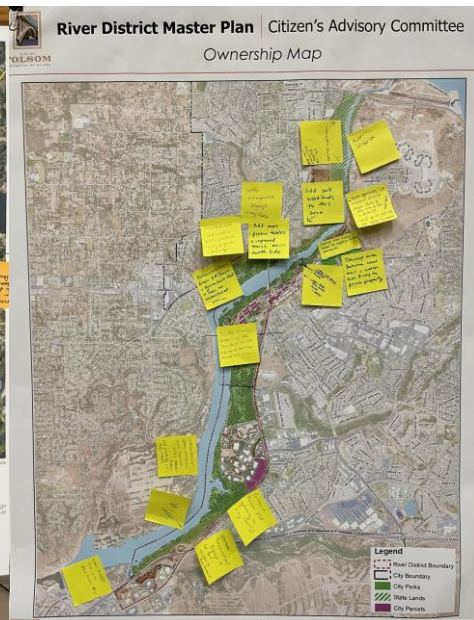
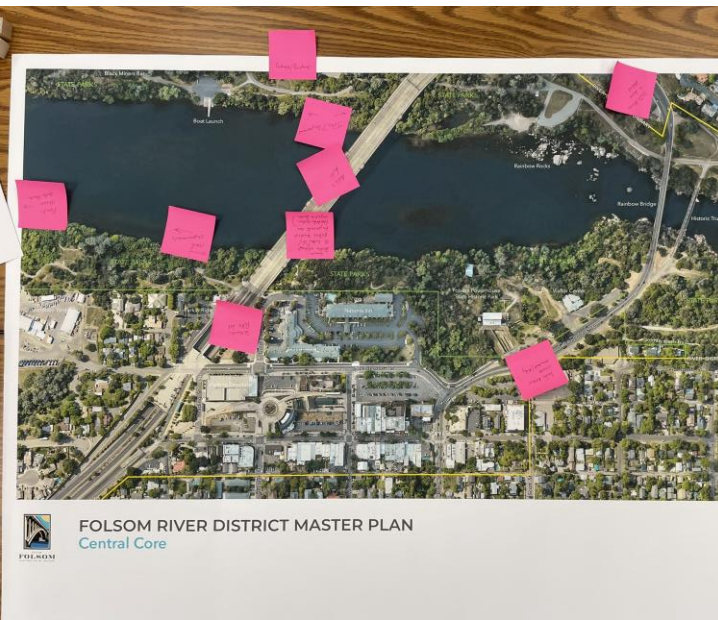
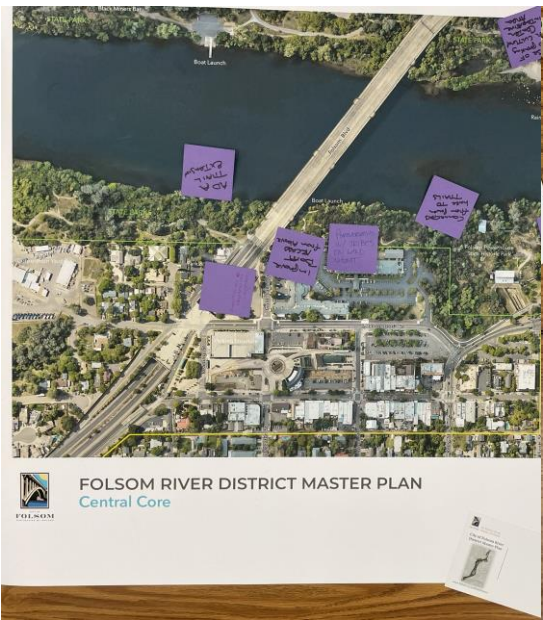
Online Questionnaire



CITY OF
FOLSOM
DISTINCTIVE BY NATURE

What new recreational uses/amenities in the River District would you support?





Consolidated Comments from Breakout Groups

| North | Central | South |
|---|---|--|
| <ul style="list-style-type: none"> • Trails <ul style="list-style-type: none"> • Extend on both sides • Close gaps • Footbridge across river to close create loop • Observational overlooks • Interpretive Signage (Native American, Powerhouse, nature, historical markers, etc.) • Revitalize rodeo amphitheater for more flexible use • Improve wayfinding • Development opportunity south of Inwood Drive • Kayak/canoe landing area upriver • Benches and picnic tables | <ul style="list-style-type: none"> • Trails <ul style="list-style-type: none"> • Waterfront connection from Truss Bridge to Folsom Blvd or beyond • Better connection from Johnny Cash Trail to Rainbow Bridge • Safer connection from Historic District to river • Improve ADA access from Historic District to river • Benches/tables/overlook next to Truss Bridge • Improve Wayfinding • Manage vegetation to open up views • Incorporate the Powerhouse area better • Stronger connection to Black Miners Bar • New dock for paddlers below Lake Natoma Inn • Boat house at "lagoon area" across from BMB • Secure bike parking area at Baker/City property • Better connection between Sutter and Leidesdorff • Improve circulation around Riley/Scott/Leidesdorff intersections | <ul style="list-style-type: none"> • Trails <ul style="list-style-type: none"> • Improve access from Folsom Blvd • Enhance accessibility for all users • Observational overlooks • Restrooms • Benches and picnic tables • Connection under Hwy 50 • Elevated canopy walk • Interpretive Signage (Willow Creek, historic orchards/groves, etc.) • Improve wayfinding (restaurants, outlets, light rail, river, etc.) • Hotel/Conference Center (Parkshore area) • Visitor Center (Museum Flat) • Clean up Alder Creek Pond, develop water access • Concessions at Willow Creek (paddling rentals, food trucks, etc) • Enhance District Gateway at Folsom Blvd |



State Parks Welcome/Visitor Center at Nimbus

Nimbus Flat

Mississippi Bar

Water trail loop in Lake Natoma lagoons

Enhance gateway to District (sense of arrival)

Trail, parking, and amenity improvements at Willow Creek

Clean up Alder Creek Pond and provide water access

Overall Comments

Interpretation

- Indigenous peoples
- Chinese heritage
- Nature

Trails

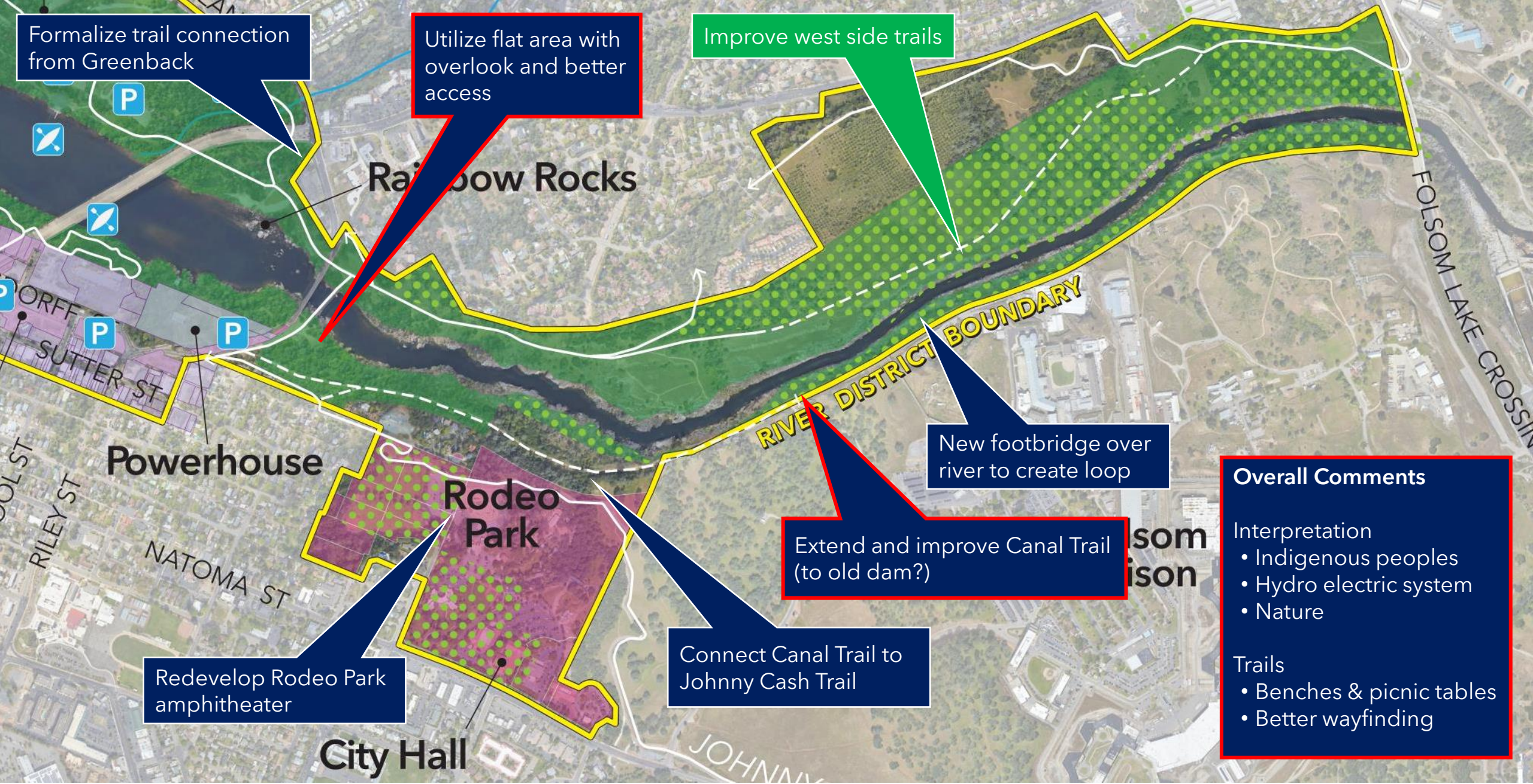
- Better access to water
- Benches & picnic tables
- Better wayfinding

Pedestrian connection across Hwy 50

State Parks Welcome/Visitor Center

Wayfinding signage to adjacent services

Hotel/Conference Center



Formalize trail connection from Greenback

Utilize flat area with overlook and better access

Improve west side trails

New footbridge over river to create loop

Extend and improve Canal Trail (to old dam?)

Connect Canal Trail to Johnny Cash Trail

Redevelop Rodeo Park amphitheater

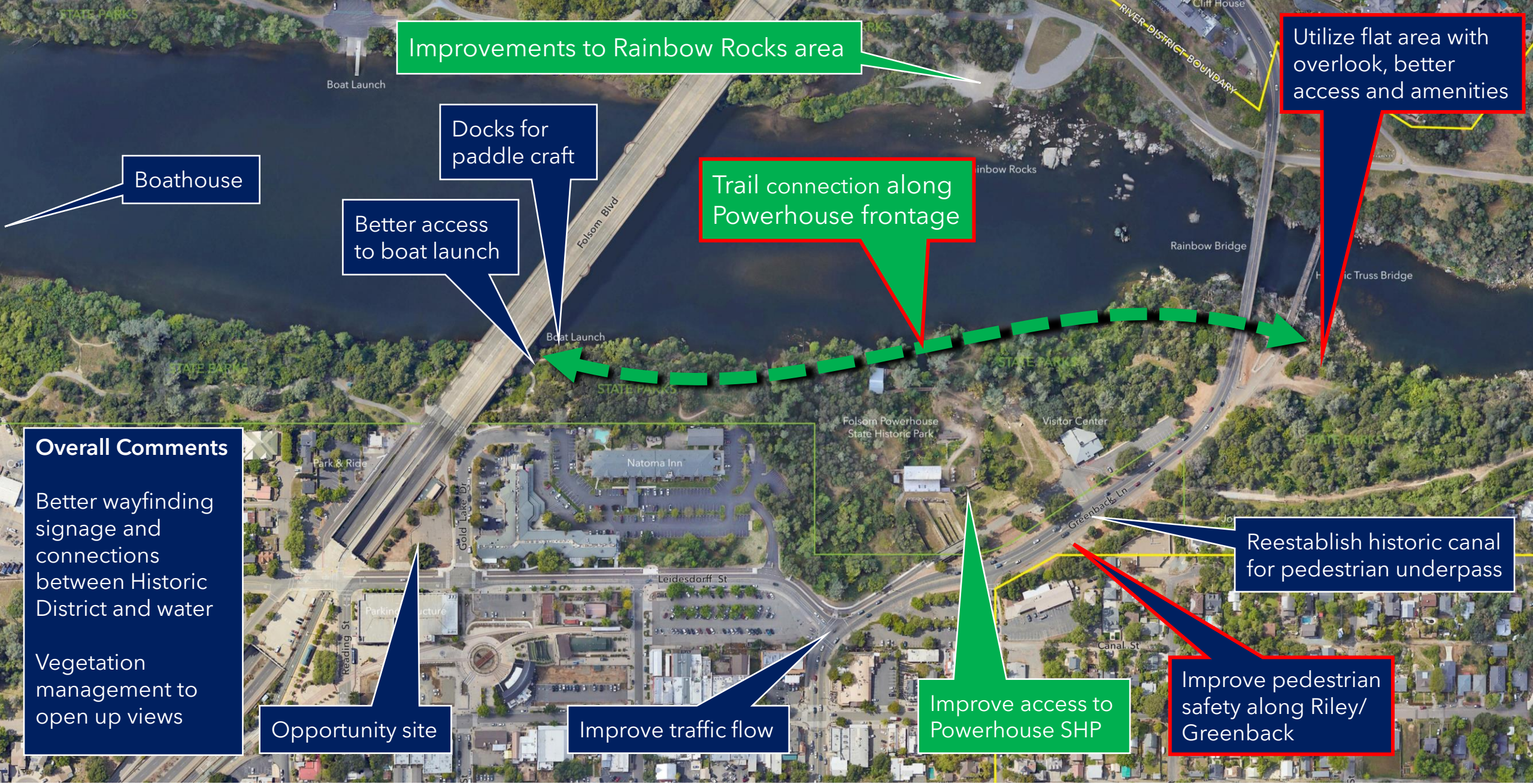
Overall Comments

Interpretation

- Indigenous peoples
- Hydro electric system
- Nature

Trails

- Benches & picnic tables
- Better wayfinding



Improvements to Rainbow Rocks area

Utilize flat area with overlook, better access and amenities

Trail connection along Powerhouse frontage

Docks for paddle craft

Better access to boat launch

Boathouse

Overall Comments

Better wayfinding signage and connections between Historic District and water

Vegetation management to open up views

Reestablish historic canal for pedestrian underpass

Improve pedestrian safety along Riley/Greenback

Improve access to Powerhouse SHP

Improve traffic flow

Opportunity site

Idea Prioritization

High Scoring Ideas/Sentiments from Social Pinpoint



CITY OF
FOLSOM
DISTINCTIVE BY NATURE

| South | Central | North |
|--|--|---|
| Overlooks of the lake | Waterfront trail in front of Powerhouse ("Bridge-to-Bridge") | Improve and extend Canal Trail, including footbridge across river |
| Improve Willow Creek launch area | Improve safety and connectivity between Historic District and Rainbow Bridge | Improve Rodeo Park area to make it a multipurpose facility |
| Provide Native American interpretation | Add public docks for personal watercraft (kayak, SUP, etc.) | Improve access to Black Miners Bar boat launch area |
| Education about nature | <i>Much interest and varying perspectives in Corp Yard site</i> | Enhance area near south end of Truss Bridge, with water access |



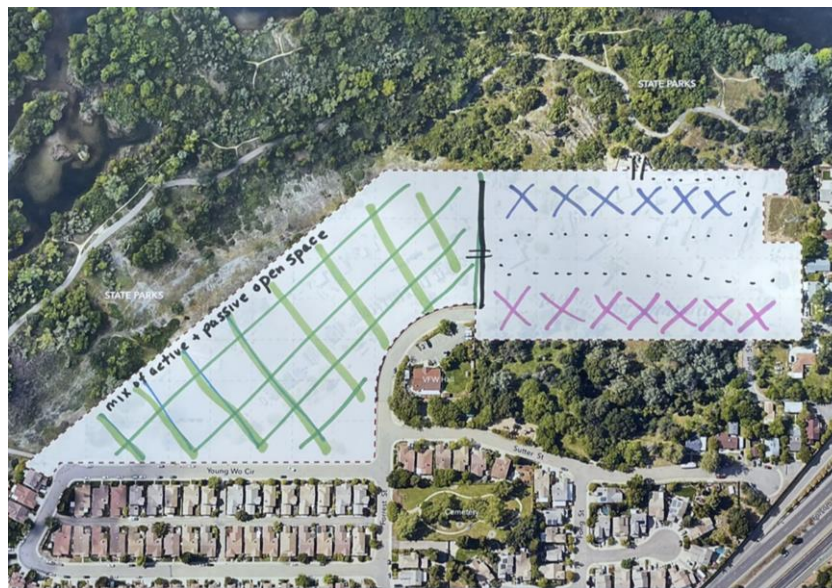
CITY OF
FOLSOM
DISTINCTIVE BY NATURE



City Corporation Yard



Corporation Yard - Six Concepts much in common



Residential



Single Family



Medium Density



Medium Density



Single Family



Multi-Family



Senior Housing

Mixed Use



Residential + Commercial



Residential + Commercial



Residential + Commercial



Residential + Commercial



Residential + Commercial



Residential + Commercial

Entertainment



Destination Space



Casual Activities



Music



Social Gathering Spaces



Indoor Venue



Outdoor Theater

Commercial & Visitor Serving



Accommodation



Museum



Dining/Shopping



Work Share Space



Private Events



Lakeview Dining

Open Space, Passive Recreation



Accessible Trails



Nature Habitat



Accessible Trails



Overlooks



River Promenade



Boardwalk

Open Space, Active Park



Picnicking



Playgrounds



Community Park



Community Park



Flexible Use



Exercise

Artisan/ Maker Space



Food & Beverage Production



Maker Space



Light Manufacturing



Artist Studios



Food & Beverage Production



Light Industrial



CITY OF
FOLSOM
DISTINCTIVE BY NATURE

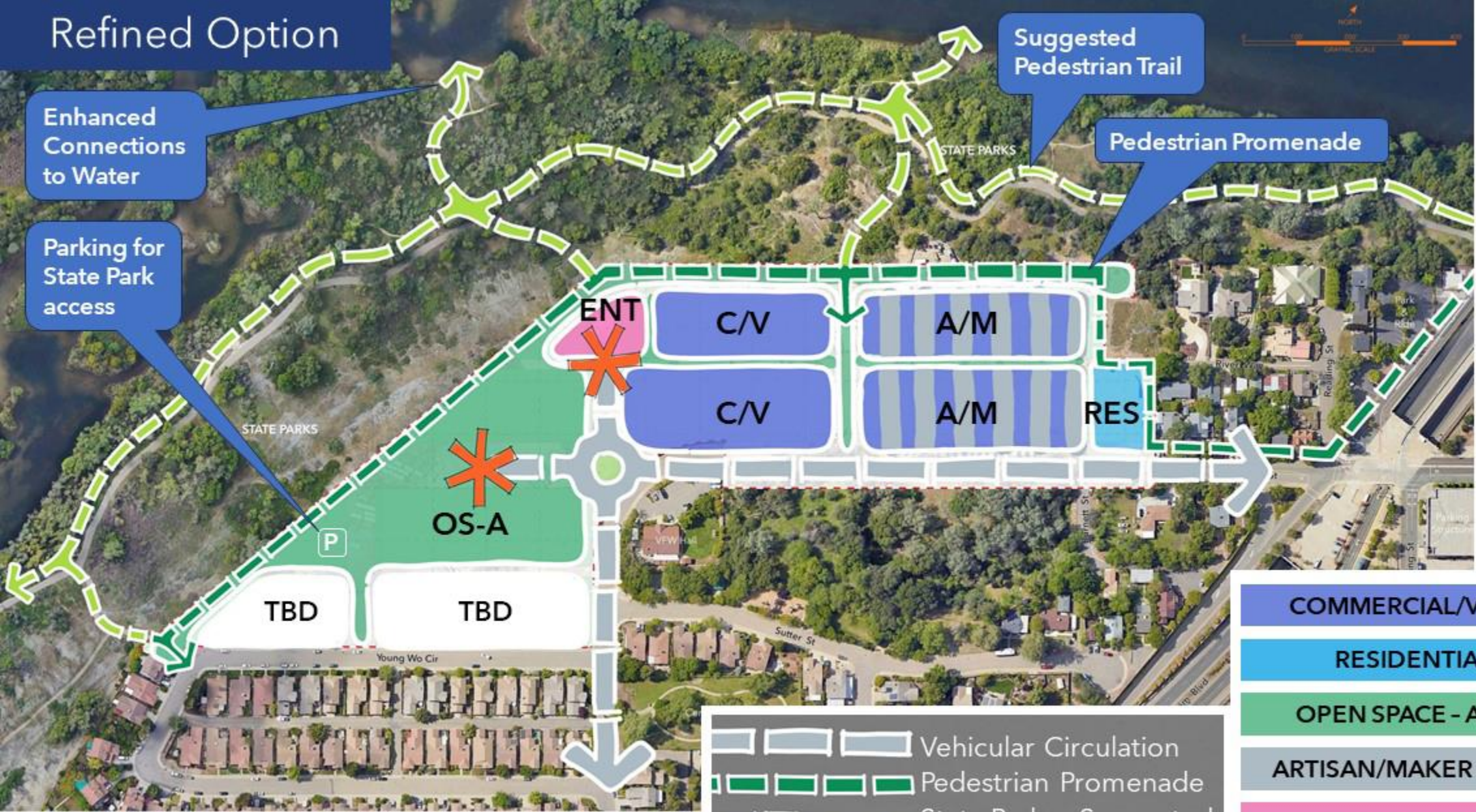
Refined Option

Enhanced Connections to Water

Parking for State Park access

Suggested Pedestrian Trail

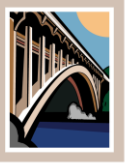
Pedestrian Promenade



CITY OF FOLSOM
DISTINCTIVE BY NATURE

| |
|----------------------------|
| COMMERCIAL/VISITOR: 3ac |
| RESIDENTIAL: 0.5ac |
| OPEN SPACE - ACTIVE: 6ac |
| ARTISAN/MAKER SPACE: 3.5ac |
| ENTERTAINMENT: 1 ac |

Vehicular Circulation
 Pedestrian Promenade
 State Parks - Suggested



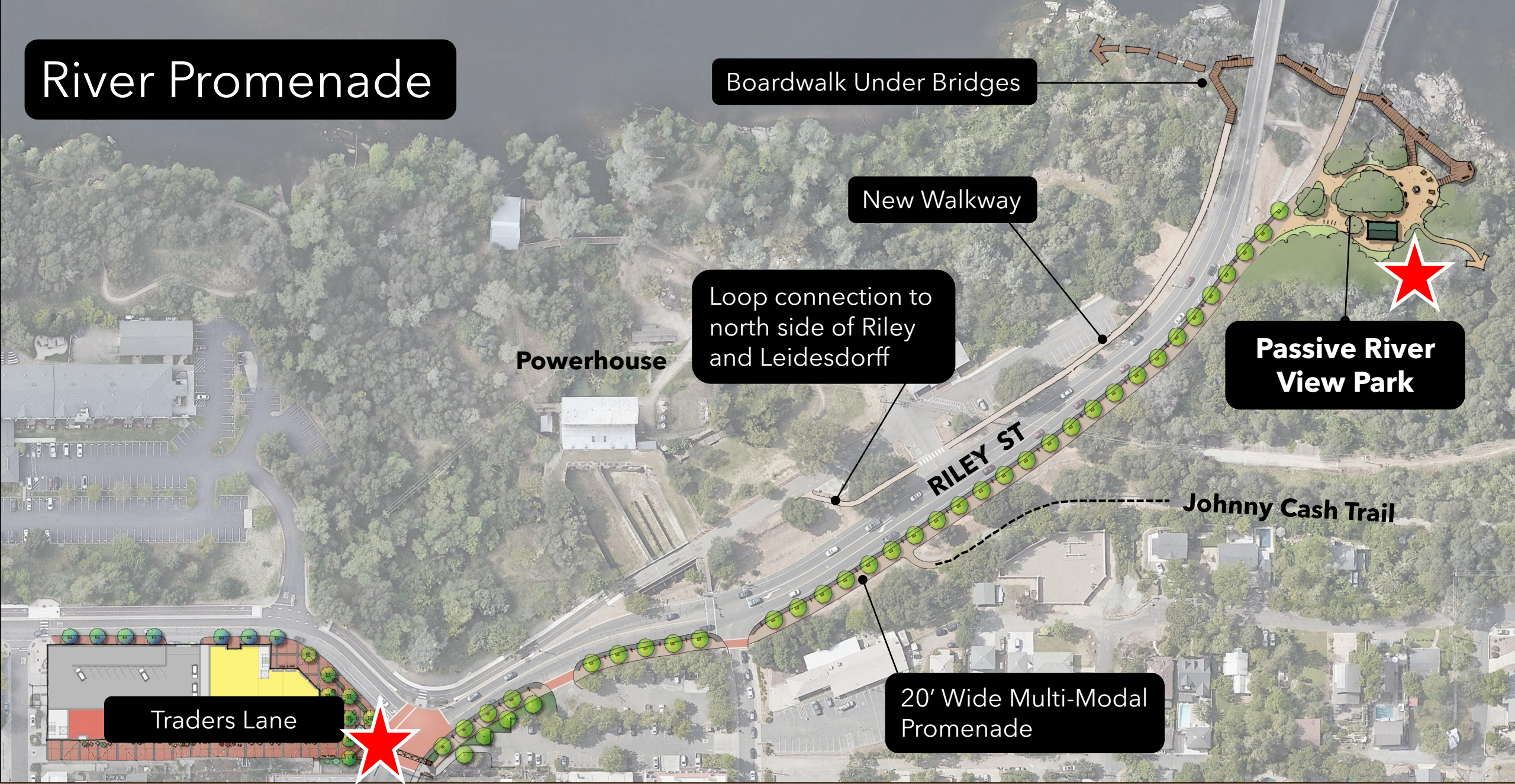
CITY OF
FOLSOM
DISTINCTIVE BY NATURE



River Promenade

RIVER DISTRICT MASTER PLAN

River Promenade



Boardwalk Under Bridges

New Walkway

Loop connection to north side of Riley and Leidesdorff

Passive River View Park

Powerhouse

RILEY ST

Johnny Cash Trail

Traders Lane

20' Wide Multi-Modal Promenade

River Promenade

Before



After



CITY OF
FOLSOM
DISTINCTIVE BY NATURE



CITY OF
FOLSOM
DISTINCTIVE BY NATURE



Northern Reach Bridge and Trail Loop



Potential Pedestrian-Only River Trail

AMERICAN RIVER PARKWAY TRAIL

CANAL TRAIL

Johnny Cash Trail Connection

Rodeo Park Connection

Existing Locked Gate (End of Public Access)

Rainbow Bridge

Truss Bridge

New Pedestrian Bridge

Robbers' Ravine Bridge

Rodeo Park

Johnny Cash Trail

STATE PARKS

Folsom Powerhouse State Historic Park

Leidesdorff St

Sutter St

Stafford St

Source: Google Earth



CITY OF FOLSOM
DISTINCTIVE BY NATURE

Robbers' Ravine Bridge

Johnny Cash Trail

Rodeo Park

Historic District

Truss Bridge

Rainbow Bridge



CITY OF
FOLSOM
DISTINCTIVE BY NATURE



Potential Connection to Johnny Cash Trail

Canal Trail

New Pedestrian Bridge

American River Parkway Trail

Concept:

Create a 1-mile loop out and back from the Truss Bridge, including the addition of a landmark pedestrian bridge



← Canal Trail →

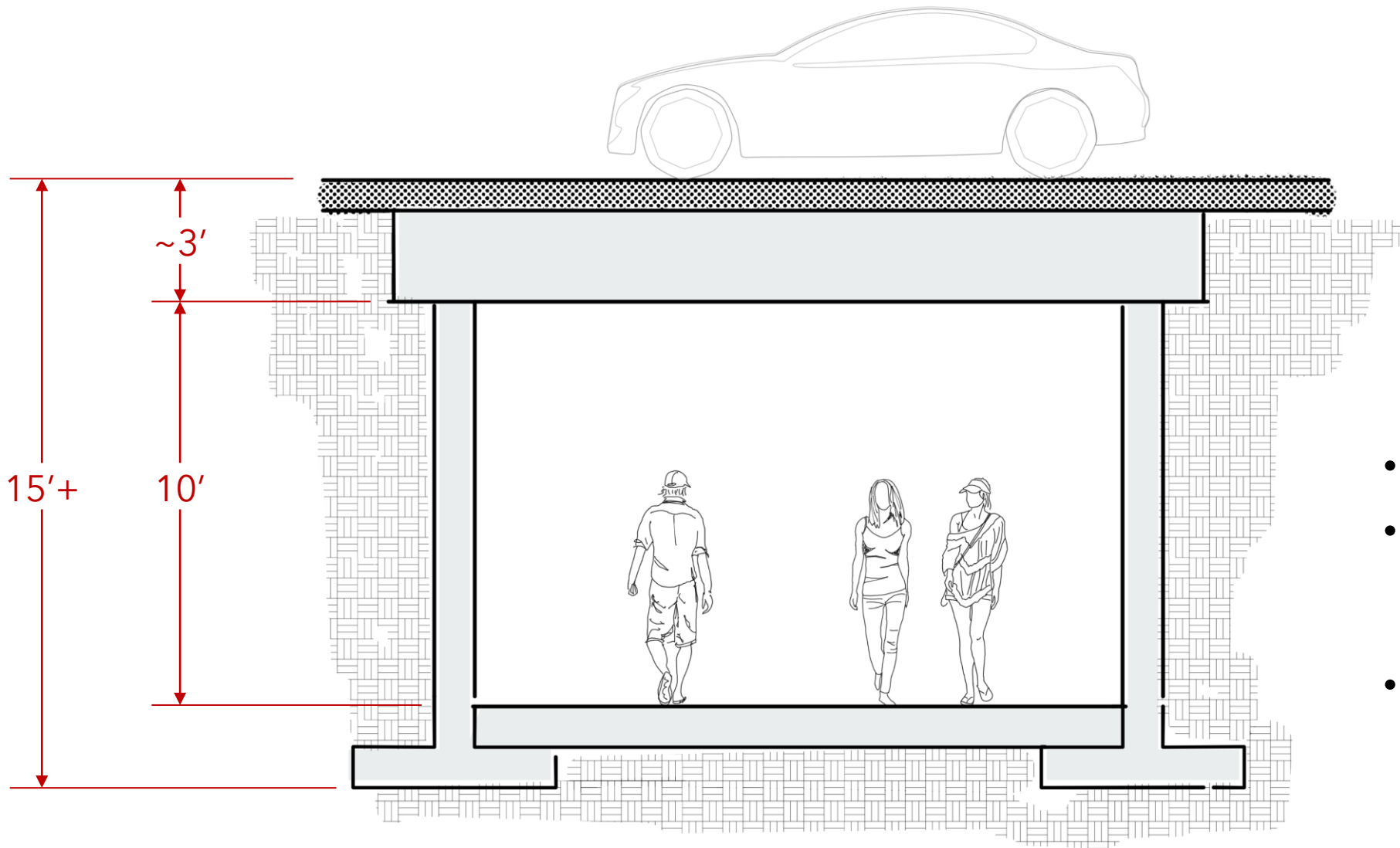
New bridge is behind here



CITY OF
FOLSOM
DISTINCTIVE BY NATURE



IDEA: Reestablish historic canal alignment to create pedestrian underpass, connecting both sides of Riley Street



- Significant excavation.
- Over 150' ramp length to get down from street level.
- Law enforcement and public safety challenges.

Schematic diagram of Riley Street underpass concept



IDEA: Abandoned due to significant construction footprint (ramps + landings) on the ground and anticipated negative cost/benefit



CITY OF
FOLSOM
DISTINCTIVE BY NATURE



Rodeo Park

STATE PARKS

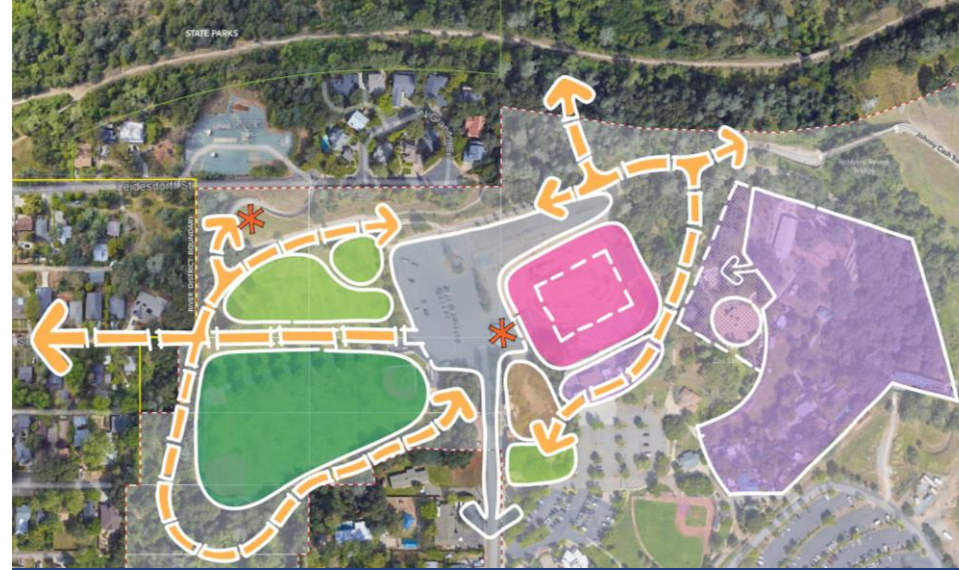
Rodeo Park



CITY OF
NOLSOM
STINCTIVE BY NATURE



A: Improved Outdoor Arena



B: Covered Arena



C: Flexible Uses



D: Maximum Sports



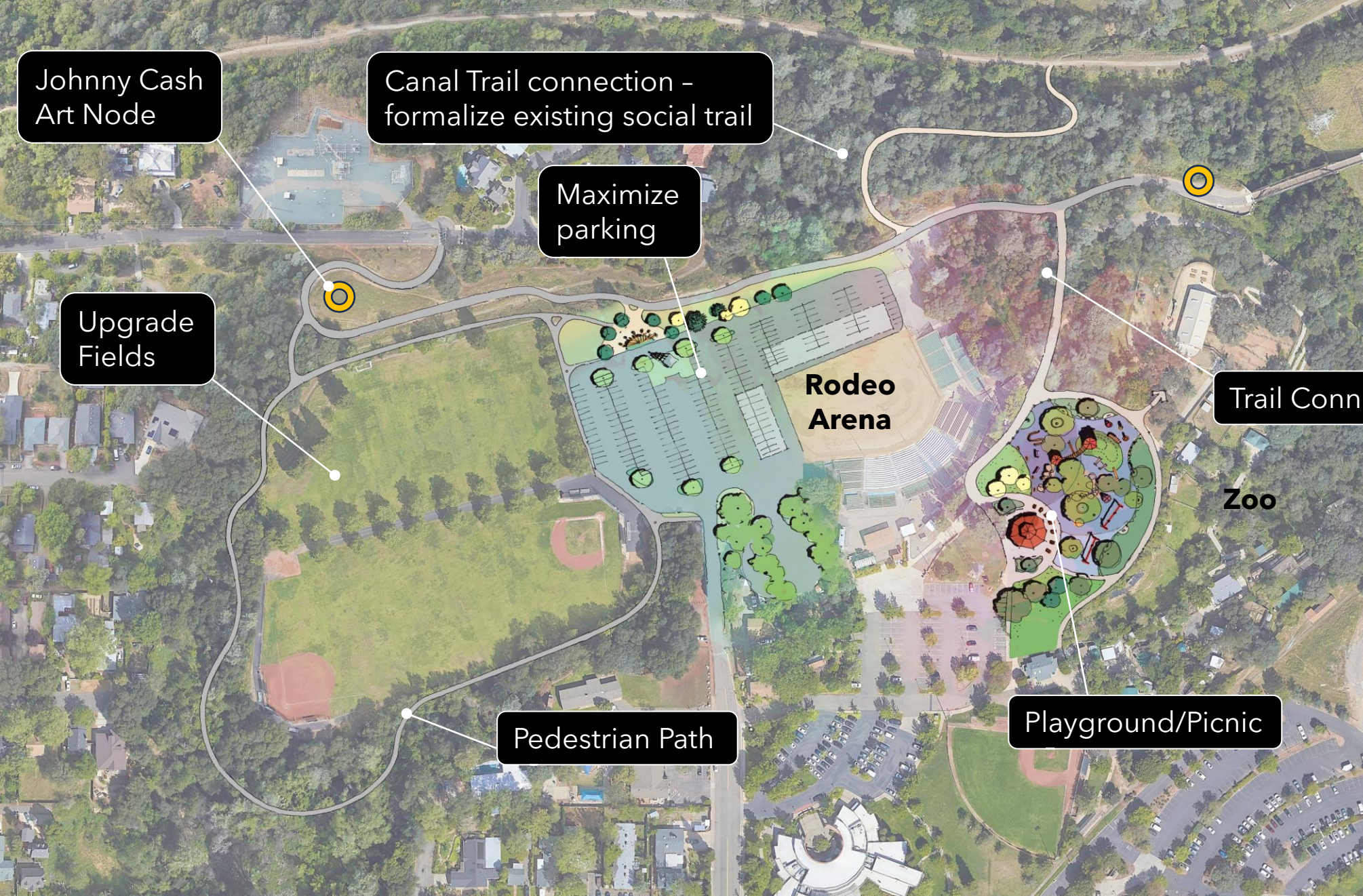
E: Fieldhouse



F: Adventure Playground



CITY OF
FOLSOM
DISTINCTIVE BY NATURE



Phase One



Adventure Play

Rodeo Arena

Zoo

12,000sf Youth Center

Sports Lighting



CITY OF
FOLSOM
DISTINCTIVE BY NATURE

Phase Two



Splash Pad / Family Picnic

Future Sutter St Connection

12,000sf Youth Center

Zoo

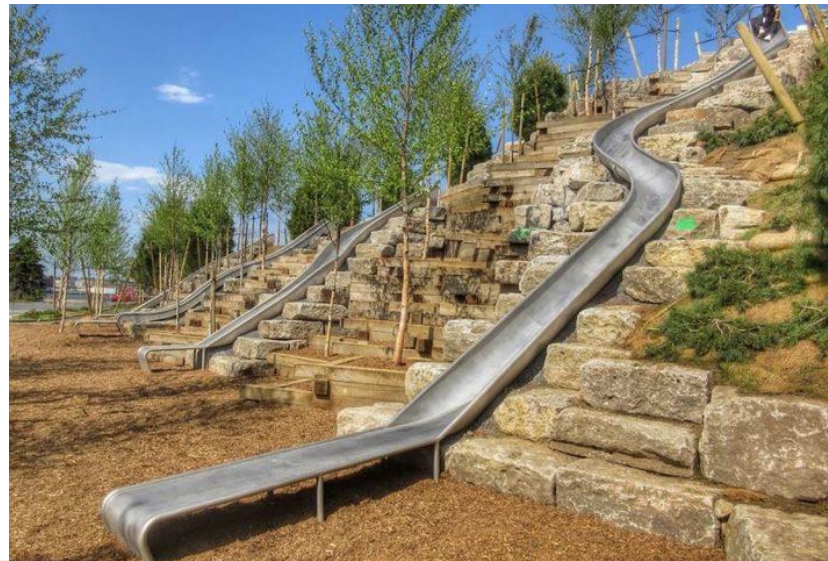


CITY OF
FOLSOM
DISTINCTIVE BY NATURE

Phase Three
(potential)

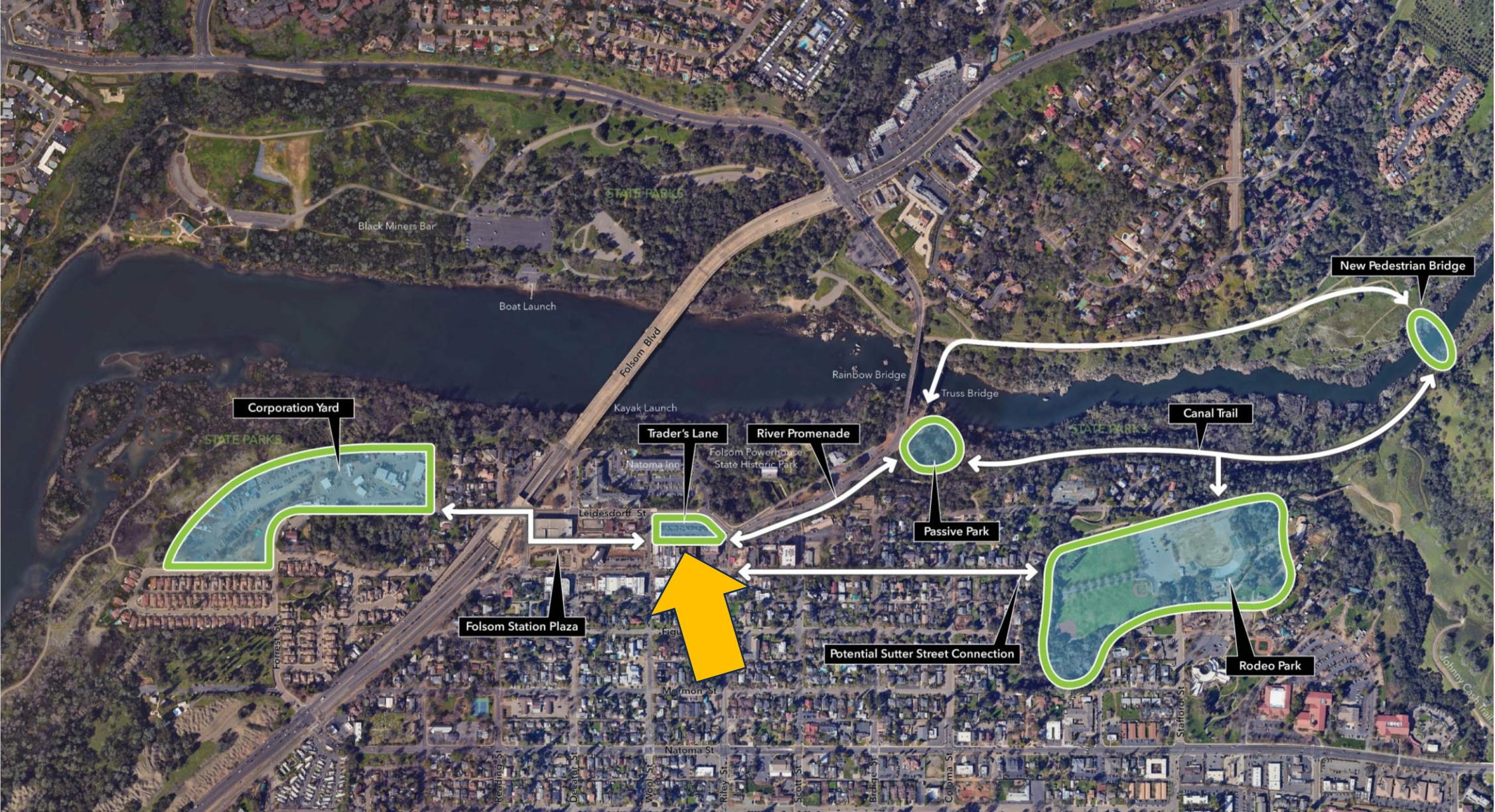


Rodeo Park Image Examples





CITY OF
FOLSOM
DISTINCTIVE BY NATURE



Traders Lane



Leidesdorff Street



Riley Street



Riley Street



Traders Lane

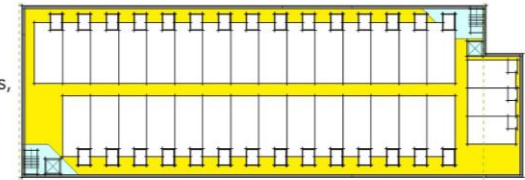


CITY OF
FOLSOM
DISTINCTIVE BY NATURE

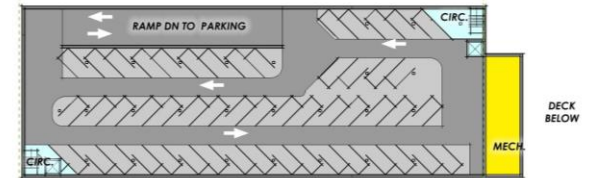


Site Plan Concept

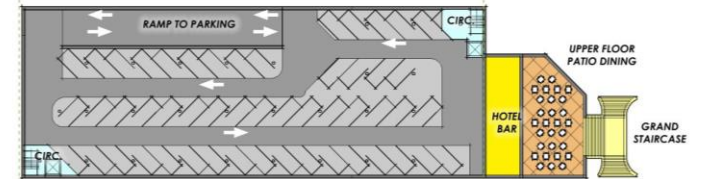
Approx 35 hotel rooms,
(or housing option)



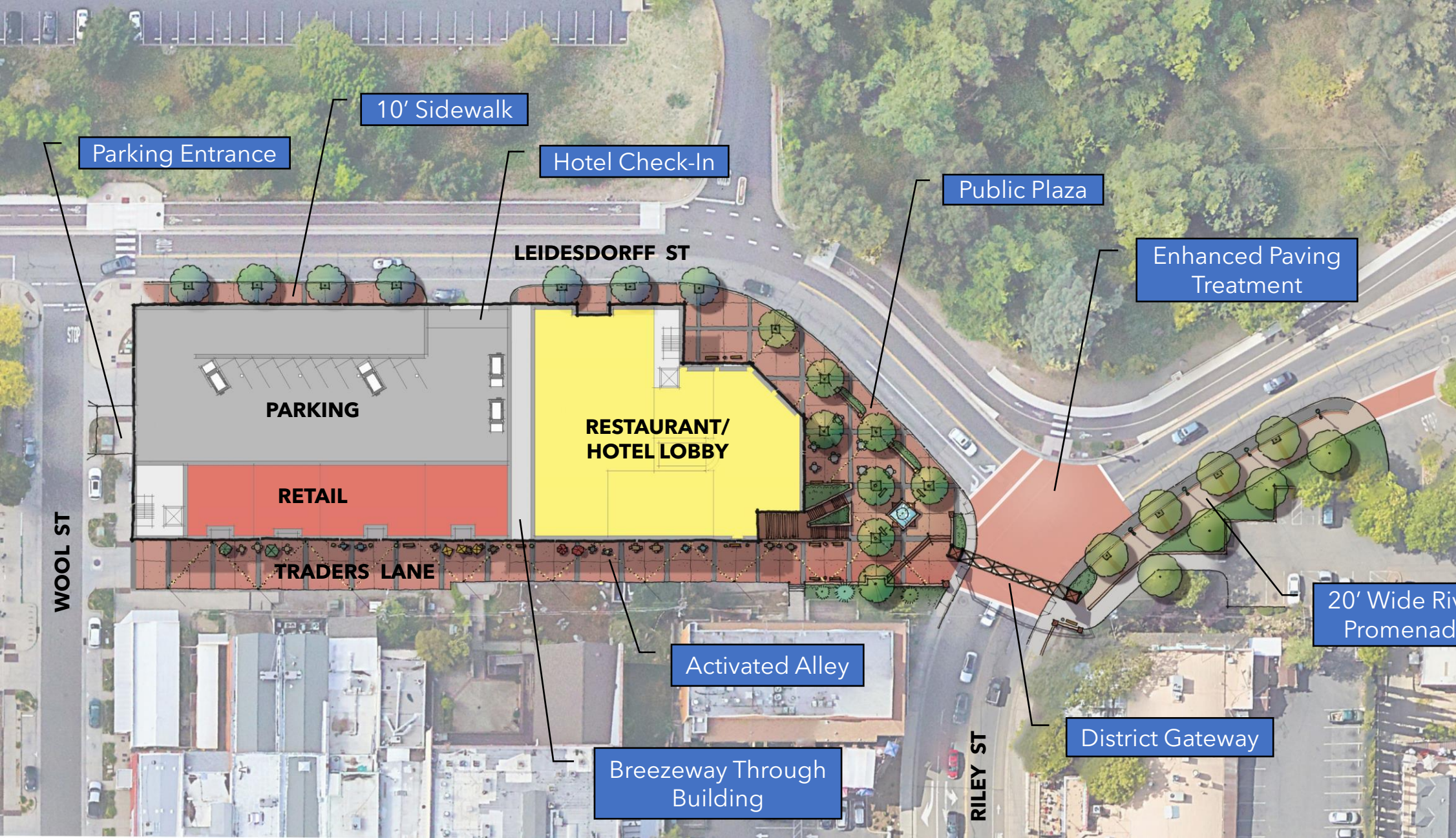
Fourth Floor Plan



Third Floor Plan



Second Floor Plan



CITY OF
FOLSOM
DISTINCTIVE BY NATURE

Parking Entrance

10' Sidewalk

Hotel Check-In

Public Plaza

Enhanced Paving Treatment

20' Wide River Promenade

District Gateway

Activated Alley

Breezeway Through Building

PARKING

RETAIL

RESTAURANT/
HOTEL LOBBY

TRADERS LANE

LEIDESDORFF ST

RILEY ST

WOOL ST



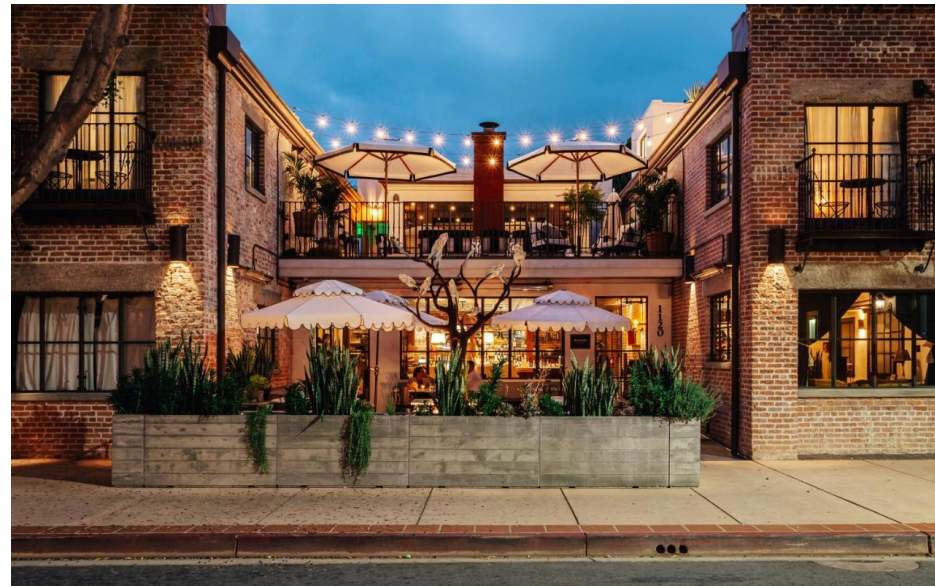
CITY OF
FOLSOM
DISTINCTIVE BY NATURE



RIVER DISTRICT MASTER PLAN



CITY OF
FOLSOM
DISTINCTIVE BY NATURE



ROUNDBOUT OPTION



CITY OF
FOLSOM
DISTINCTIVE BY NATURE



Would impact
design here

Would impact
design here



FOLSOM BLVD

POWERHOUSE

CORP YARD

LEIDESDORFF ST

LIGHT RAIL

SUTTER ST

DECATUR

WOOL

RILEY

SCOTT





FOLSOM BLVD

POWERHOUSE

CORP YARD

LEIDESDORFF ST

LIGHT RAIL

SUTTER ST

DECATUR

WOOL

RILEY

SCOTT

RIVER DISTRICT MASTER PLAN



An aerial photograph of a river district. The river flows through the center, with several bridges crossing it. The surrounding area is densely packed with buildings and trees, some of which are showing autumn foliage. The text is overlaid on the image.

River District Master Plan Joint Commission Workshop

Planning Commission
Historic District Commission
Parks & Recreation Commission

July 30, 2024