

# Ordinance 1348 (2<sup>nd</sup> reading)

# Purpose and Need



# Waste Collection Operations

Conceptual;  
not to scale



\*FMC 8.32.100(B)

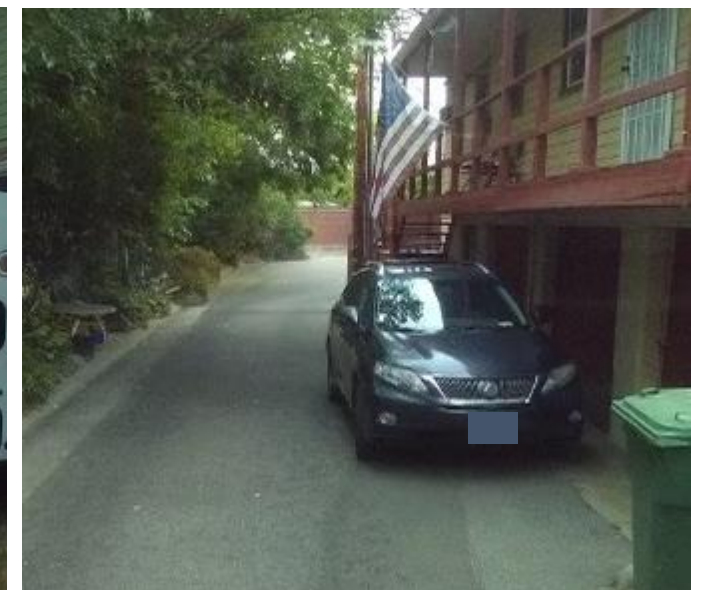
# FMC 10.20.220 & 230 (1st reading)

## **10.20.220 Historic District Alleys.**

No person shall park or leave standing any vehicle on the public portion of public alleyways within the Folsom Historic District. Vehicles parked on private property adjacent to the public alleyway are not subject to this regulation.

## **10.20.230 Historic District Alleys – Vehicle Removal.**

Any vehicle parked in violation of Section 10.20.220 may be removed at the owner's expense.



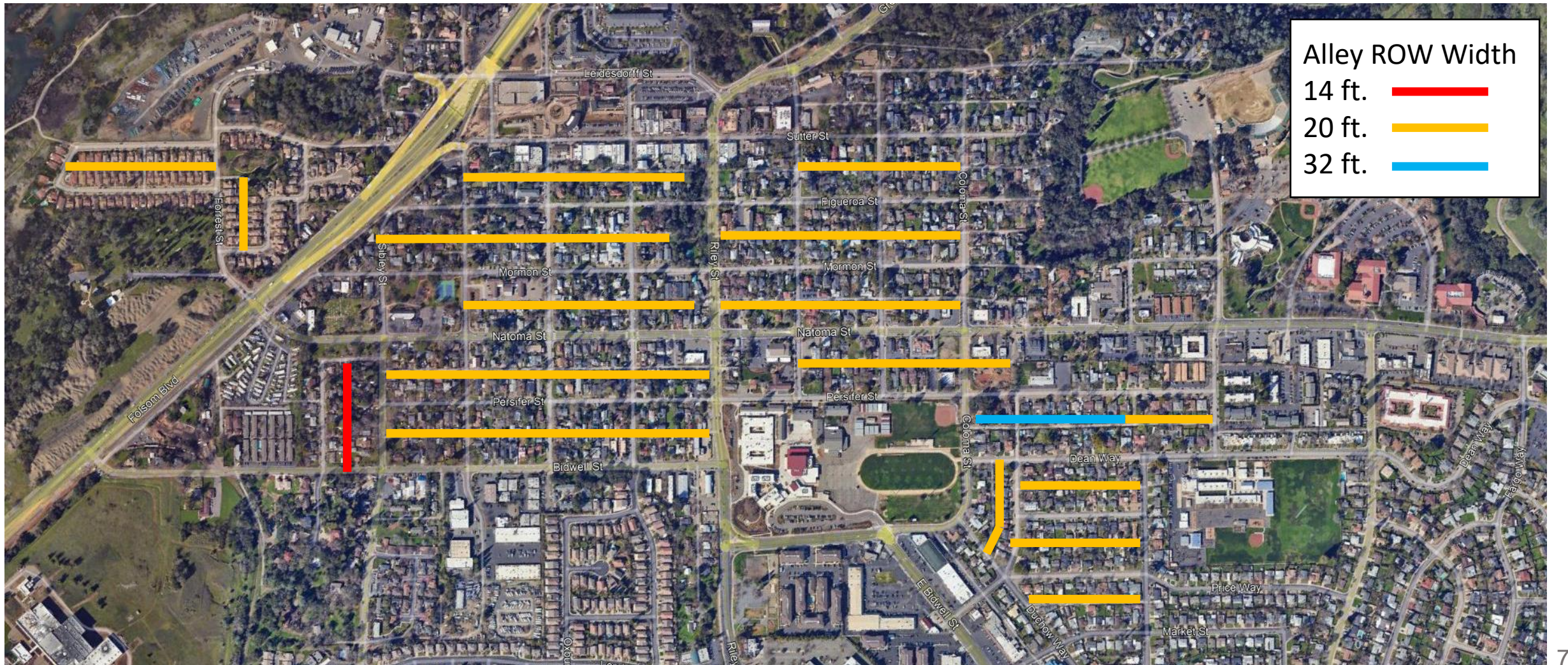
# Council requests from 10/8/24

- Additional time for public comment
- Information on specific alleys with known problems (Public Works)
- Map showing alley widths in the Historic District (Public Works)
- Data from Fire Department regarding callouts to alleyways (Fire)

# Alleys with reported issues



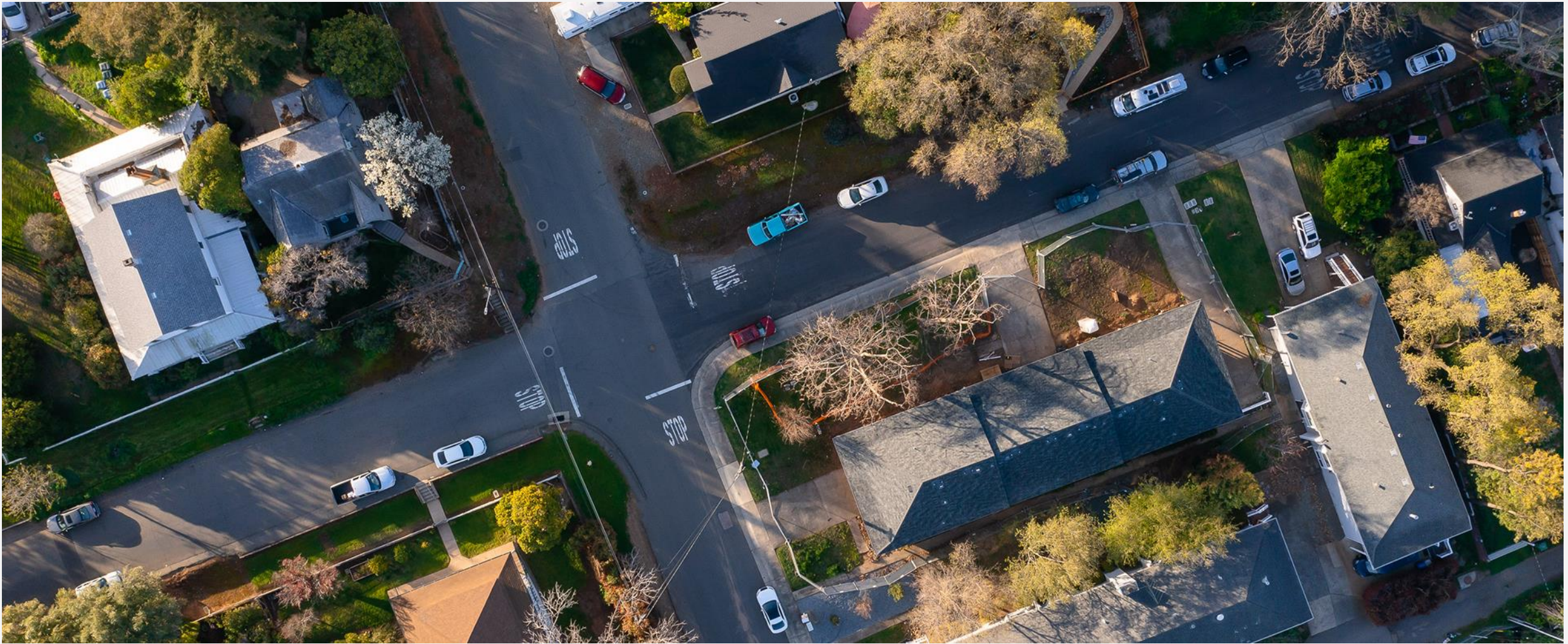
# Historic District Alley Widths



# Summary

- Historic District alleys used for City waste collection and emergency vehicle access
- Generally 20-foot wide public spaces with no provision for private use other than vehicle access
- Parking in alleys impedes City services and emergency access
- When Waste Collection is impeded, one or more residences may be impacted and each may have to pay a \$53 Missed Pickup fee or wait until next scheduled service
- Total of 107 ADUs approved in Historic District; most include parking in form of garages and/or driveways; 5-7 ADUs do not have any parking and would need to rely on nearby on-street parking
- If approved, parking prohibition would take effect in 30 days (December 22<sup>nd</sup>) at earliest
- Staff would focus on education and encouragement and only resort to enforcement as last resort





Thank you. Questions?

